

# Hook Cleat (Aluminium)

## 371 Series



**The hook cleat is an LUL approved two piece aluminium industrial cleat designed to aid single person installation.**

### Features and Benefits

- Suitable for use with cable diameters 19 to 76mm.
- Manufactured from aluminium alloy.
- Self-adjusting ranges.
- Two-piece, single fixing design.
- Can be double stacked on a single fixing.
- Can be installed in temporary open position to aid single person working.
- Suitable for indoor dry normal industrial use or outdoor unpolluted areas.
- Operating temperature -60°C to +105°C.
- Not designed to secure cables in long vertical routes.
- LUL APR Product ID 1962.

### Performance Data

Test Standard	EN 50368:2003
Type	6.1.1 Metallic
Impact Resistance	6.2.5 V. Heavy
Lateral Load	1.32 -> 1.5 kN
Axial Load	82 -> 109 N
Needle Flame	>120 secs

\* Technical Information subject to change without notice



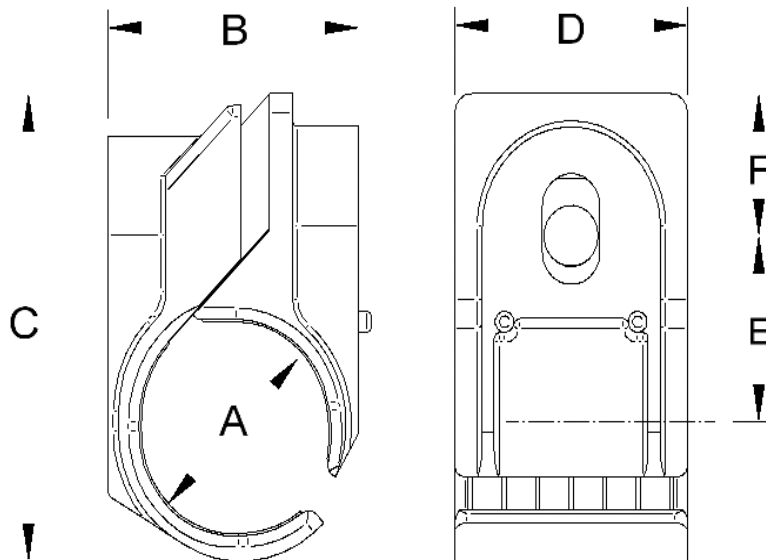
## Technical Data

Cable and Cleat Selection			Cleat Details						
Design Number	Cable Diameter		Dimensions (mm)						Weight (g)
	A (mm)		B		C	D	E	F	
Nylon	Min	Max	Min	Max					G
371AA03	19	22	29	33	57	38	24	19	57
371AA04	22	25	34	37	62	38	26	19	71
371AA05	25	32	37	45	74	45	29	24	106
371AA06	32	38	44	50	81	45	32	24	113
371AA07	38	44	50	57	88	45	35	24	142
371AA08	44	51	55	63	94	45	38	24	142
371AA09	51	57	64	72	103	45	43	24	191
371AA10	57	64	72	79	111	45	48	24	213
371AA11	64	70	80	91	124	45	53	25	291
371AA12	70	76	91	96	132	45	57	27	326

\* Technical information subject to change without notice

### Method of Fixing

In all applications the cleat should be mounted on suitable M10 fixings. When mounting directly on channel, adaptor plate 380AG02 should be used.



**Prysmian Cables & Systems Limited,**  
Oak Road, Wrexham Industrial Estate, Wrexham, LL13 9PH, UK

**Commercial Enquiries,**  
Sales Office Tel: 0845 767 8345,  
International Sales Office Tel: +44 2380 295481

[www.biconcomponents.co.uk](http://www.biconcomponents.co.uk)