

# Afumex Telcleat (LSOH) 385 Series



**The afumex telcleat is an LUL approved single piece cleat which provides protection against all weather conditions and simple installation in a one piece, single fixing design.**

## Features and Benefits

- Suitable for use with cable diameters 10 to 51mm.
- Manufactured from LSOH polymer.
- Designed for use with Afumex LSOH and Saffire OHLS cables.
- Overlapping self-adjusting ranges.
- Sunlight (UV) and weather resistant.
- One piece, single fixing design.
- Can be double stacked on a single fixing.
- Operating temperature -40°C to +40°C.
- Tested in accordance with BS EN 50368.
- LUL APR Product ID 1259.

## Performance Data

Test Standard	EN 50368:2003
Type	6.1.2 Non-Metallic
Impact Resistance	6.2.4 Heavy -> 6.2.5 V. Heavy
Lateral Load	0.136 -> 0.781 kN
Axial Load	0.119 -> 1.024 kN
Needle Flame	>120 secs

\* Technical Information subject to change without notice



## Technical Data

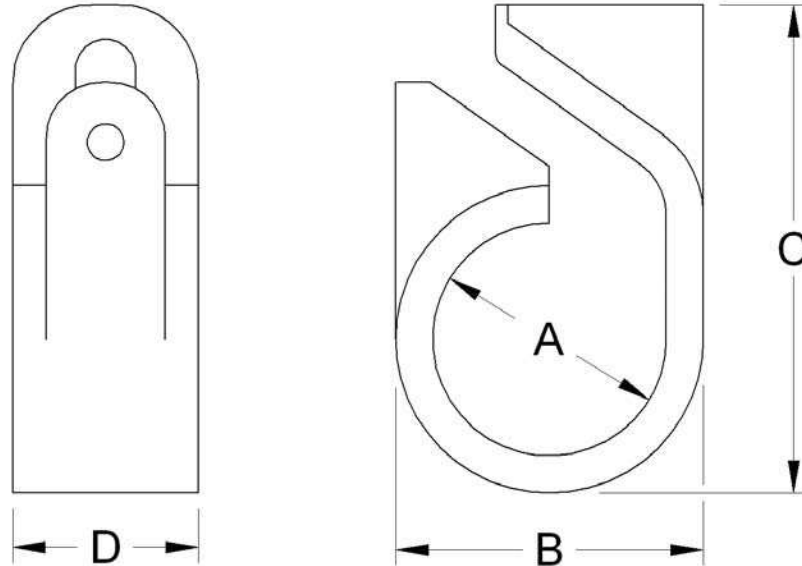
**Afumex SAFFIRE<sup>OHLS</sup>**

Cable and Cleat Selection				Cleat Details						
Design Number	Cable Diameter		Standard Pack Quantities	Dimensions (mm)				Weight (g)	Roundhead woodscrew masonry, concrete or wood ins x No	Screw Bolt for Cable Tray mm
	Min	Max		Min	Max	Max	D			
385LSF01	10.5	14.5	100	15	18	32	12	3.3	1 1/4 x 8	M4 x 30
385LSF02	12.2	16.7	100	17	22	36	14	5.6	1 1/2 x 8	M4 x 35
385LSF03	14.6	19.8	100	21	26	43	16	9.5	1 3/4 x 8	M4 x 40
385LSF04	17.7	24.0	50	25	31	51	18	14.7	2 x 8	M4 x 45
385LSF05	21.7	28.5	25	30	37	57	20	20.4	2 1/4 x 12	M6 x 50
385LSF06	26.2	34.2	25	35	43	65	22	29.2	2 1/2 x 12	M6 x 60
385LSF07	31.9	41.6	10	42	52	78	25	36.7	2 3/4 x 12	M6 x 70
385LSF08	39.3	51.1	10	50	62	91	26	58.1	3 1/4 x 12	M6 x 80

\* Technical Information subject to change without notice

### Method of Fixing

The cleat is opened up and placed around the cable so that the end of the cleat containing the slot will be in contact with the mounting surface, except for the 385LSF01, which should be reversed to put the slot uppermost. In this case an M5 washer should be used to prevent the nut entering the slot of the cleat.



**Prysmian Cables & Systems Limited,**  
Oak Road, Wrexham Industrial Estate, Wrexham, LL13 9PH, UK

**Commercial Enquiries,**  
Sales Office Tel: 0845 767 8345,  
International Sales Office Tel: +44 2380 295481

[www.biconcomponents.co.uk](http://www.biconcomponents.co.uk)