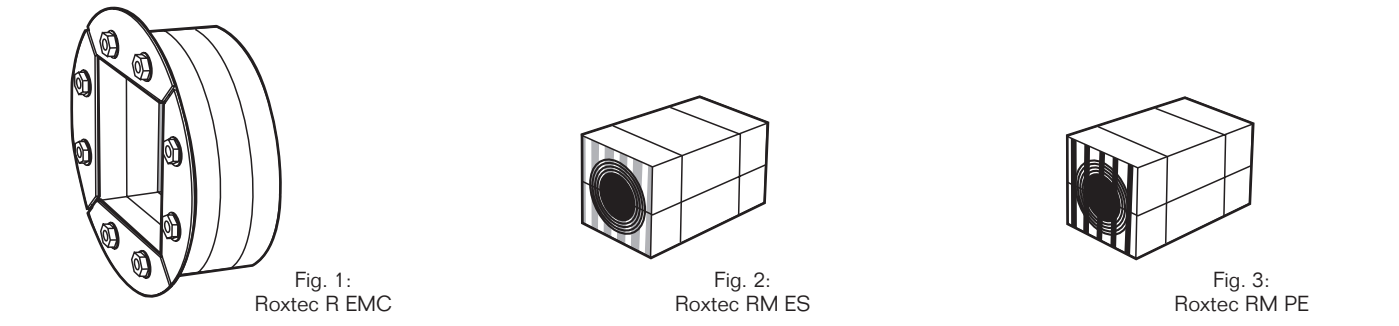


Products



Installation

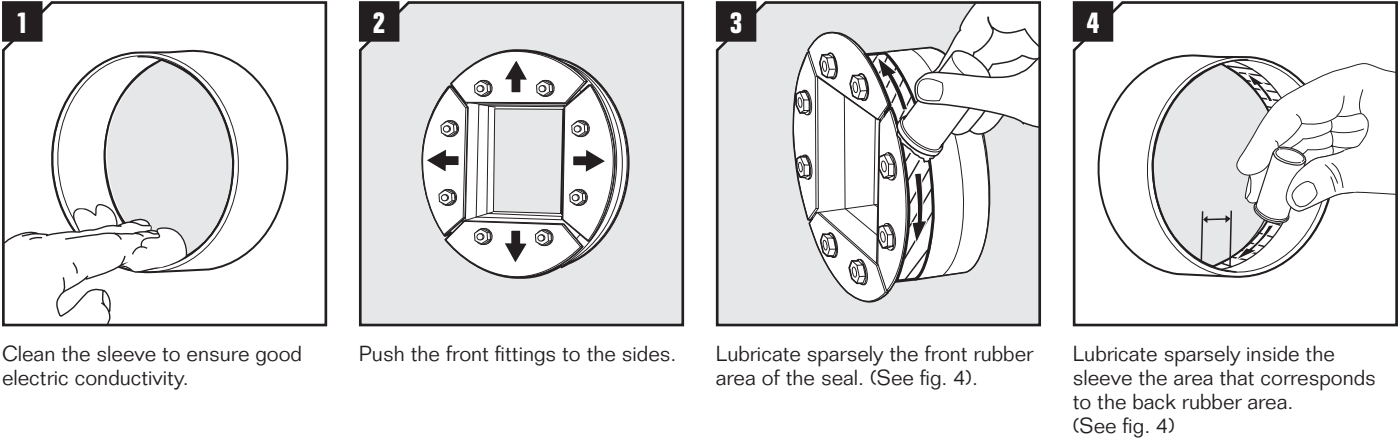
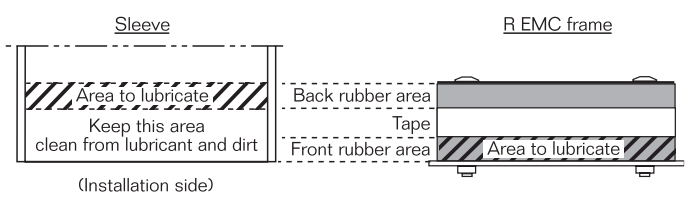
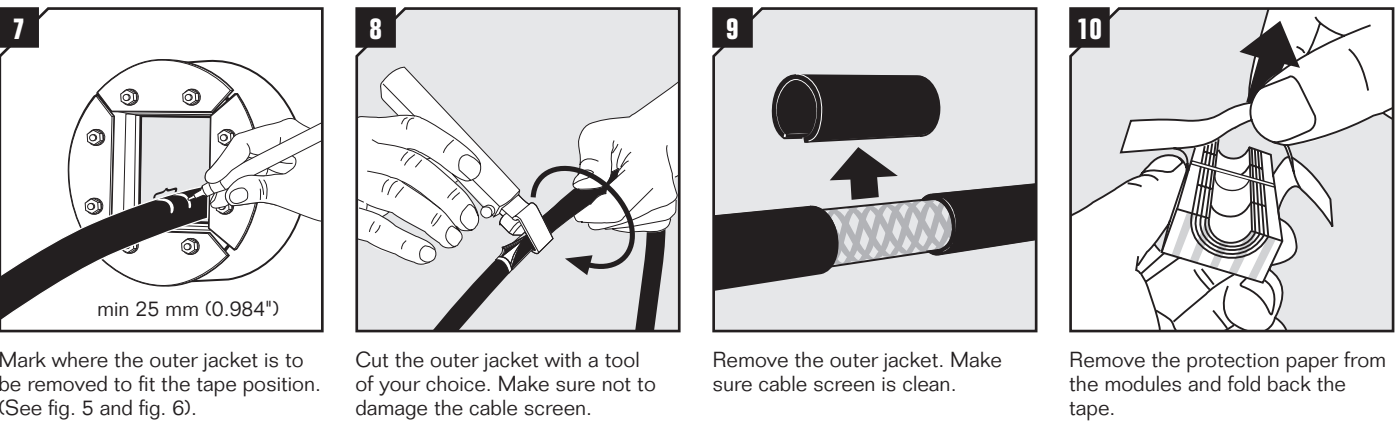


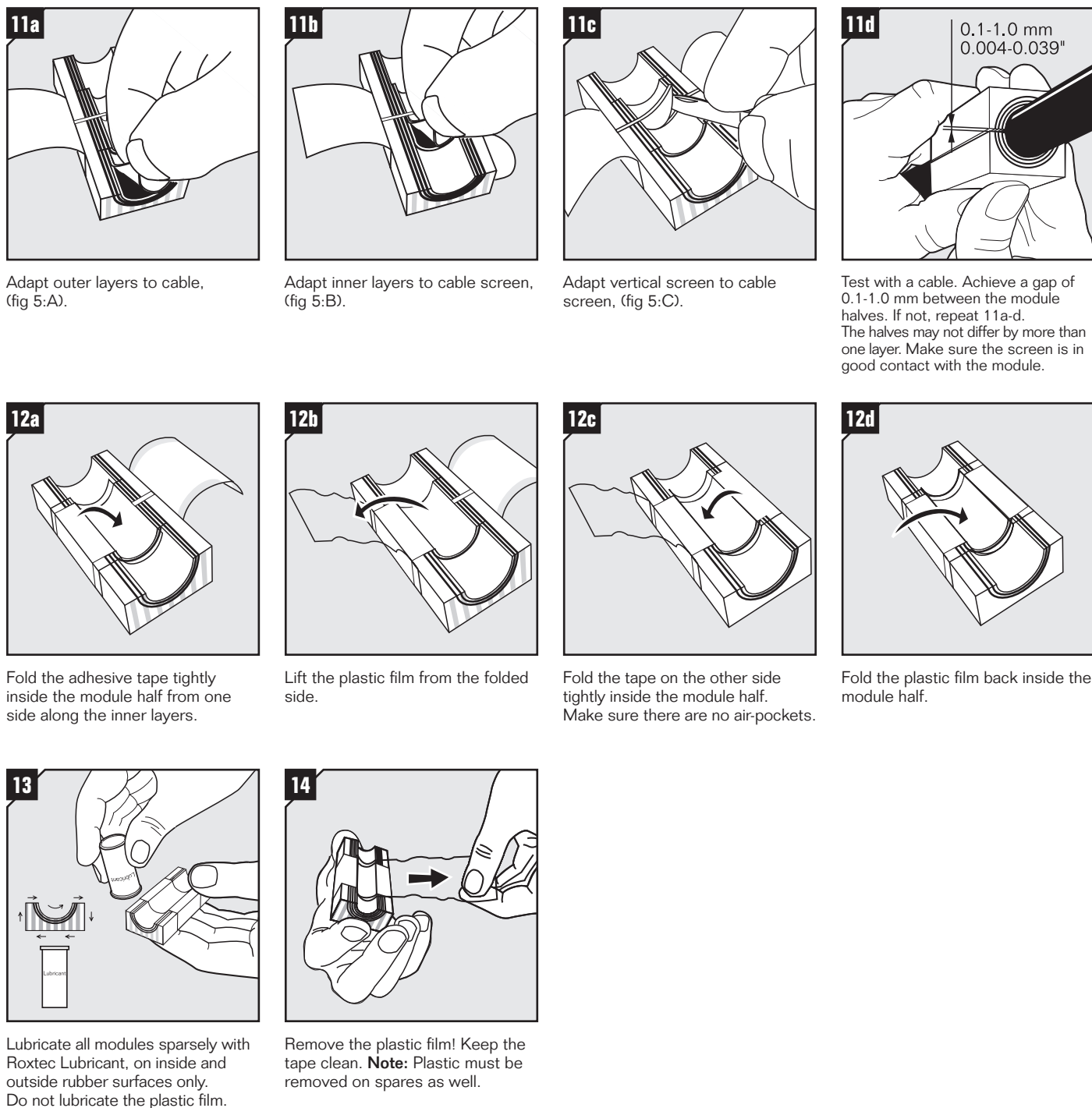
Fig. 4



Avoid getting lubricant on the tape by lubricating the sleeve and R EMC frame according to fig. 4.



Installation Roxtec RM ES modules



Please proceed to last page to complete the installation

Fig. 5

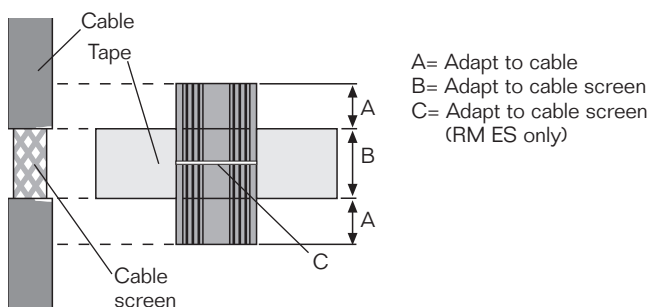
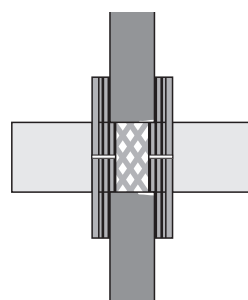
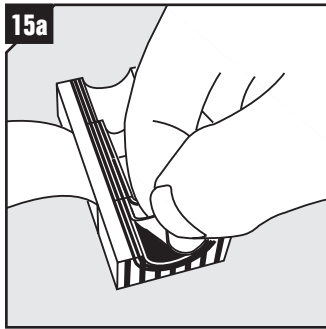


Fig. 6

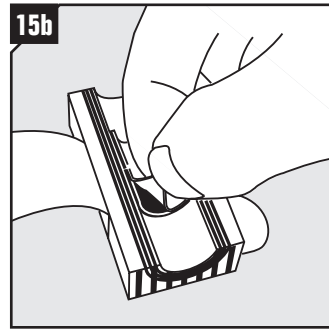


- Minimum accommodation diameter of the module refers to the minimum cable screen diameter.
- Maximum accommodation diameter of the module refers to the maximum cable jacket diameter.

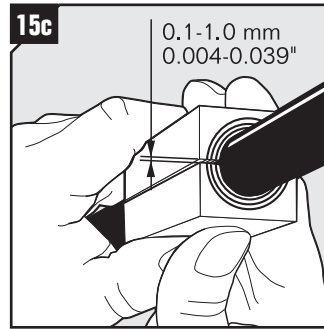
Installation Roxtec RM PE modules



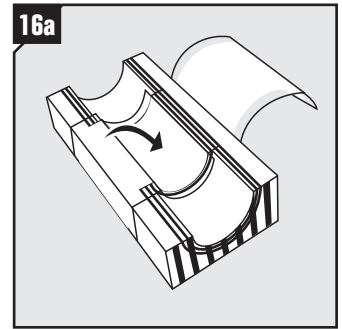
Adapt layers to fit outer jacket.
(Fig 7:A).



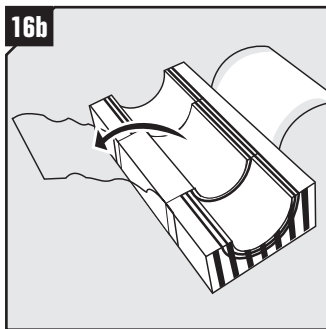
Adapt layers to fit cable screen.
(Fig 7:B).



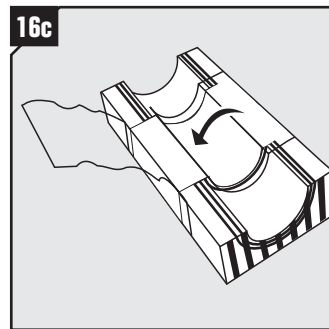
Test with a cable. Achieve a gap of 0.1-1.0 mm between the module halves. If not, repeat 15a-c. The halves may not differ by more than one layer. Make sure the screen is in good contact with the module.



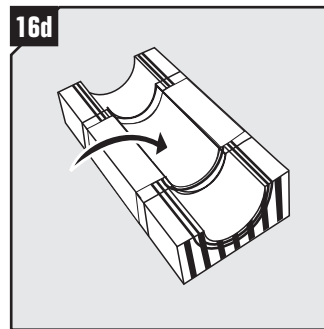
Fold the adhesive tape tightly inside the module half from one side along the inner layers.



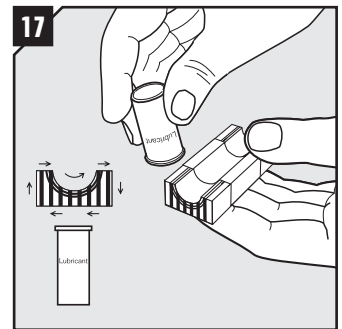
Lift the plastic film from the folded side.



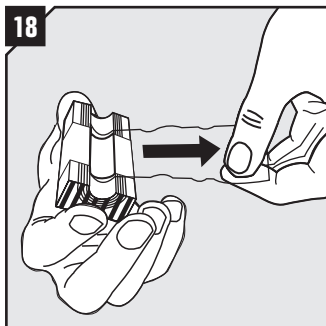
Fold the tape on the other side tightly inside the module half. Make sure there are no air-pockets.



Fold the plastic film back inside the module half.



Lubricate all modules sparsely with Roxtec Lubricant on inside and outside rubber surfaces only. Do not lubricate the film.



Remove plastic film! Keep the tape clean. **Note:** Plastic must be removed on spares.

Fig. 7

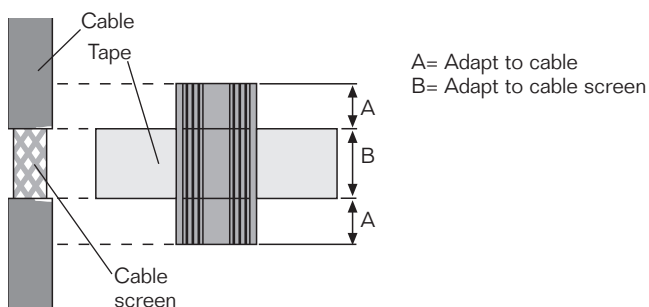
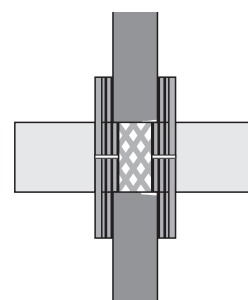
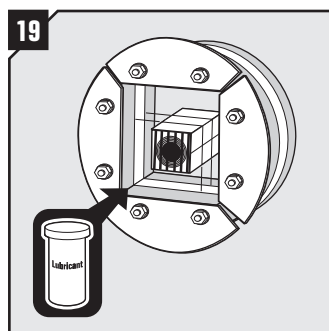


Fig. 8

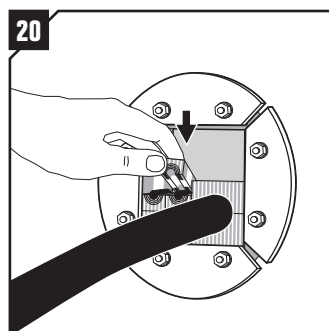


- Minimum accommodation diameter of the module refers to the minimum cable screen diameter.
- Maximum accommodation diameter of the module refers to the maximum cable jacket diameter.

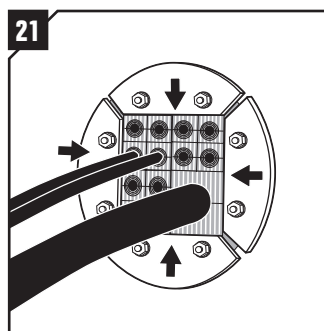
Installation continued



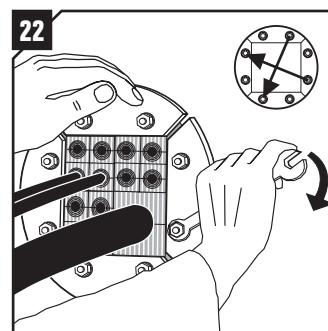
Lubricate the frame and the corners on the areas that will be in contact with the rubber of the modules. Do not lubricate the areas that will be in contact with the tape.



Insert the modules around the cables according to your installation plan (transit plan).



Push the front fittings back towards the center.



Tighten the nuts crosswise. The frame will compress until it is sealed. Please see recommended max torque in the table.

Type:	Rec. max torque* (Nm)
R 70 - R 127	6
R 150 - R 200	9

* The recommended max torque depends on several things, e.g. cable or pipe size, amount of lubricant used, sleeve size or material in the cable sheet, etc.

Disassembly

Reverse order.

Note

- For optimum reliability, wait 24 hours or longer after installation before exposing the cables/pipes to strain or pressure.
- To be used with: RM ES or RM PE components.
- Cables/pipes shall go straight through the frame.



Thorne & Derrick
+44 (0) 191 410 4292
www.powerandcables.com

DISCLAIMER

"The Roxtec cable entry sealing system ("the Roxtec system") is a modular-based system of sealing products consisting of different components. Each and every one of the components is necessary for the best performance of the Roxtec system. The Roxtec system has been certified to resist a number of different hazards. Any such certification, and the ability of the Roxtec system to resist such hazards, is dependent on all components that are installed as a part of the Roxtec system. Thus, the certification is not valid and does not apply unless all components installed as part of the Roxtec system are manufactured by or under license from Roxtec ("authorized manufacturer"). Roxtec gives no performance guarantee with respect to the Roxtec system, unless (i) all components installed as part of the Roxtec system are manufactured by an authorized manufacturer and (ii) the purchaser is in compliance with (a), and (b), below.
(a) During storage, the Roxtec system or part thereof, shall be kept indoors in its original packaging at room temperature.
(b) Installation shall be carried out in accordance with Roxtec installation instructions in effect from time to time.
The product information provided by Roxtec does not release the purchaser of the

Roxtec system, or part thereof, from the obligation to independently determine the suitability of the products for the intended process, installation and/or use. Roxtec gives no guarantee for the Roxtec system or any part thereof and assumes no liability for any loss or damage whatsoever, whether direct, indirect, consequential, loss of profit or otherwise, occurred or caused by the Roxtec systems or installations containing components not manufactured by an authorized manufacturer and/or occurred or caused by the use of the Roxtec system in a manner or for an application other than for which the Roxtec system was designed or intended.
Roxtec expressly excludes any implied warranties of merchantability and fitness for a particular purpose and all other express or implied representations and warranties provided by statute or common law. User determines suitability of the Roxtec system for intended use and assumes all risk and liability in connection therewith. In no event shall Roxtec be liable for indirect, consequential, punitive, special, exemplary or incidental damages or losses."

