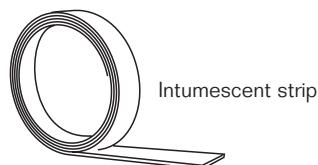
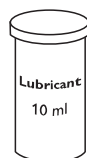
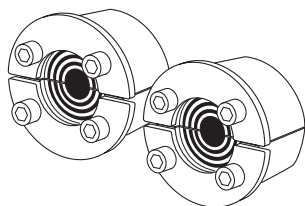


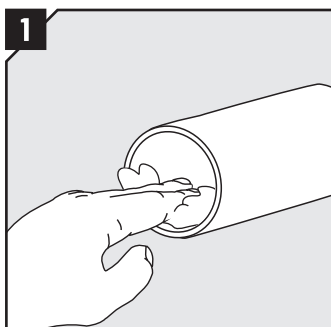
Installation instructions Roxtec RS PPS

Fig 1: Water tightness or fire rated resistance

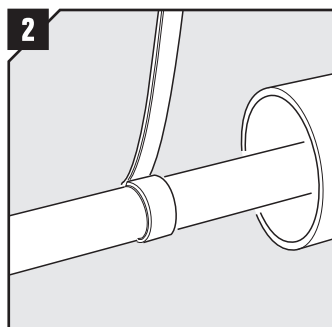
Fig 2: Sustained water tightness after fire exposure



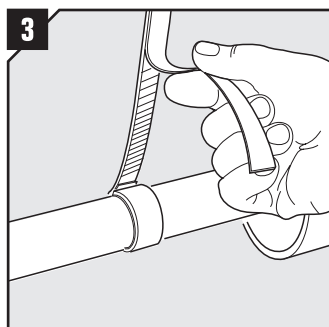
Roxtec Plastic Pipe Seal installation



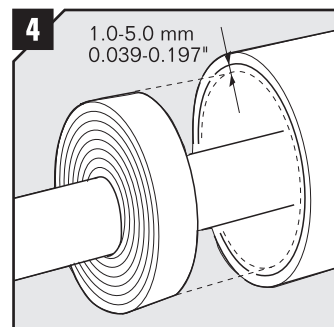
Remove any dirt inside the sleeve and pull the pipe through.



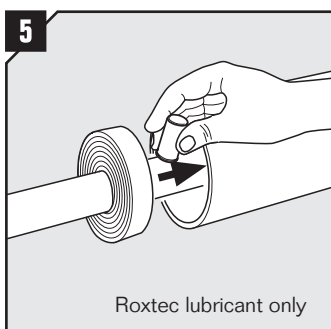
Wrap the intumescent strip once around the pipe without removing the protective tape. This will make it slide better into the sleeve later.



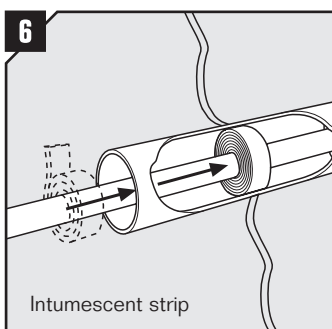
Break the protective tape from the strip and remove it.



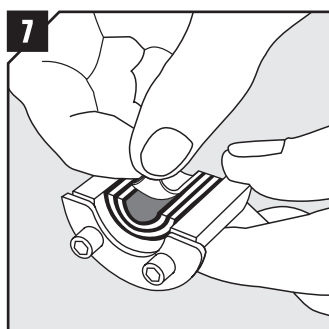
Continue to wrap the strip onto the pipe until there is 1.0-5.0 mm free space left between the strip and sleeve.



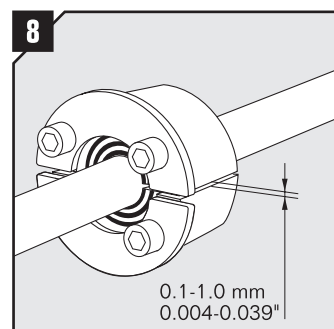
Tip: Lubricate the pipe with Roxtec Lubricant to ease the sliding.



Move/slide the strip into the sleeve and as close to the center as possible. For sustained water tightness after fire exposure applications place one intumescent strip as close as possible to each RS seal according to fig. 2.



Adapt the seal to the pipe by peeling off layers from the halves until you reach the gap seen in pic.8. The halves may not differ by more than one layer.

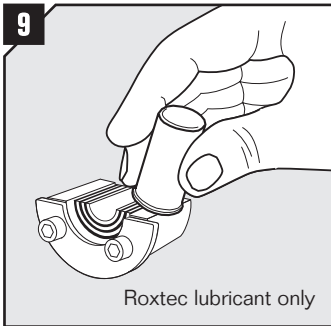


Achieve a 0.1-1.0 mm gap between the two halves when held against the pipe.

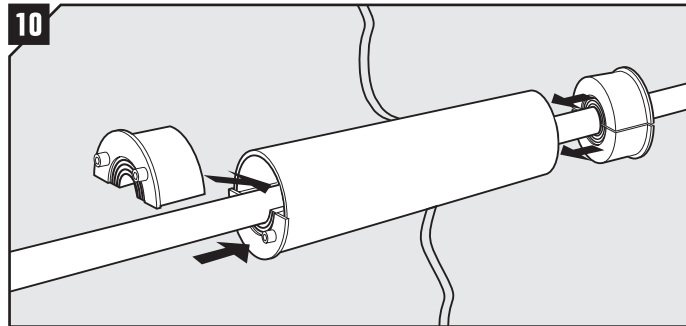


**THORNE &
DERRICK**
INTERNATIONAL

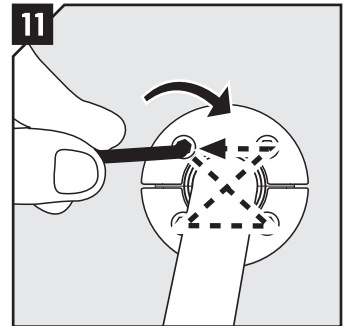
Thorne & Derrick
+44 (0) 191 410 4292
www.powerandcables.com



Lubricate thoroughly on the inside surfaces and sparsely on the outside of the seal.



Insert the halves one by one into the sleeve. Make sure the intumescent material stays in the center of the sleeve. For installations having sustained water tightness after fire exposure make sure that the intumescent strips are as close to the RS seals as possible according to fig. 2 at previous page.



Tighten the screws crosswise. The seal will compress and seal the transit. See table below for recommended torque. See fig. 3 and 4 for reference.

Disassembly

Reverse order

Fig. 3

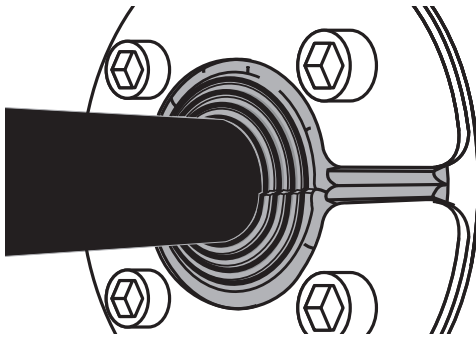
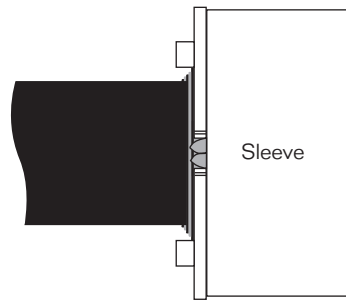


Fig. 4



The seal is compressed when rubber expands over the front fittings and the layers bulge outwards.

Tightening torque

Size: RS PPS	Approx. torque* (Nm)
31	1
43 - 100	4
125 - 200	7
225 - 400	17

* The tightening torque depends on several things, e.g. cable or pipe size, amount of used lubricant, sleeve size or material in the cable sheet, etc.



Thorne & Derrick
+44 (0) 191 410 4292
www.powerandcables.com

Note

- Wait 24 hours or longer after installation before exposing the pipe to strain or pressure.
- Pipes shall go straight through the frame.
- Sustained water tightness after fire exposure applications requires a longer sleeve.

DISCLAIMER

"The Roxeltec cable entry sealing system ("the Roxeltec system") is a modular-based system of sealing products consisting of different components. Each and every one of the components is necessary for the best performance of the Roxeltec system. The Roxeltec system has been certified to resist a number of different hazards. Any such certification, and the ability of the Roxeltec system to resist such hazards, is dependent on all components that are installed as a part of the Roxeltec system. Thus, the certification is not valid and does not apply unless all components installed as part of the Roxeltec system are manufactured by or under license from Roxeltec ("authorized manufacturer"). Roxeltec gives no performance guarantee with respect to the Roxeltec system, unless (i) all components installed as part of the Roxeltec system are manufactured by an authorized manufacturer and (ii) the purchaser is in compliance with (a), and (b), below.

(a) During storage, the Roxeltec system or part thereof, shall be kept indoors in its original packaging at room temperature.

(b) Installation shall be carried out in accordance with Roxeltec installation instructions in effect from time to time.

The product information provided by Roxeltec does not release the purchaser of the

Roxeltec system, or part thereof, from the obligation to independently determine the suitability of the products for the intended process, installation and/or use. Roxeltec gives no guarantee for the Roxeltec system or any part thereof and assumes no liability for any loss or damage whatsoever, whether direct, indirect, consequential, loss of profit or otherwise, occurred or caused by the Roxeltec systems or installations containing components not manufactured by an authorized manufacturer and/or occurred or caused by the use of the Roxeltec system in a manner or for an application other than for which the Roxeltec system was designed or intended.

Roxeltec expressly excludes any implied warranties of merchantability and fitness for a particular purpose and all other express or implied representations and warranties provided by statute or common law. User determines suitability of the Roxeltec system for intended use and assumes all risk and liability in connection therewith. In no event shall Roxeltec be liable for indirect, consequential, punitive, special, exemplary or incidental damages or losses."

