



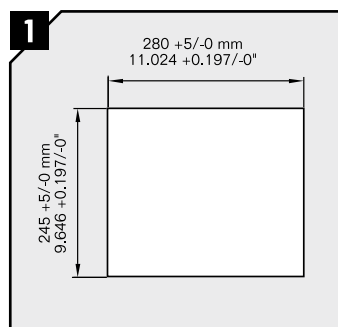
THORNE &
DERRICK
INTERNATIONAL

Thorne & Derrick
+44 (0) 191 410 4292
www.powerandcables.com

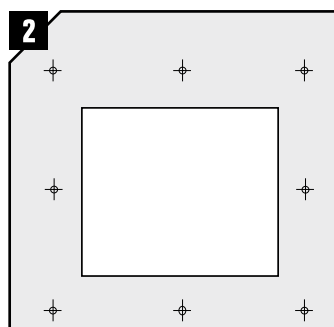


Installation Instruction Roxtec Swan Neck 6x2 frame

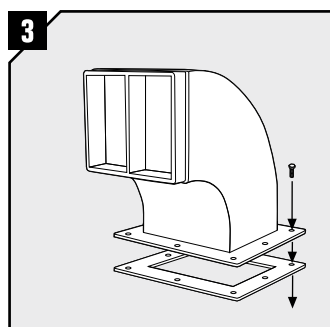
Frame installation



Mark a rectangular opening

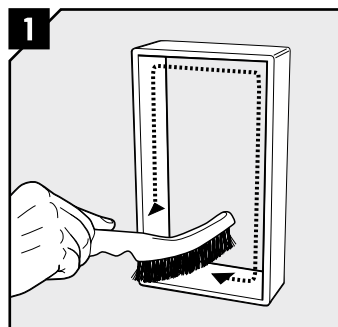


Use the frame as template for the drilling of the screw holes.
Hole in frame $\varnothing = 12 \text{ mm}$ (0.472").

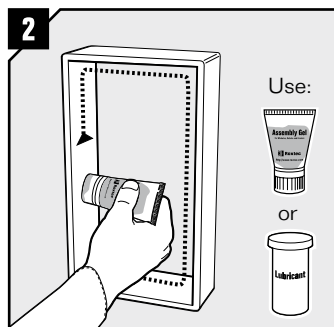


Attach the frame to the roof using bolts/bolts and nuts. The rubber gasket shall be placed between frame and roof.

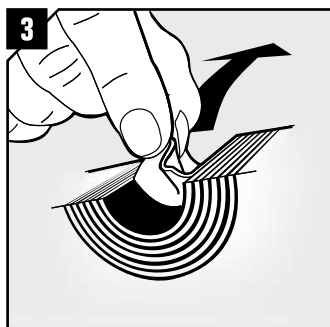
Modules installation



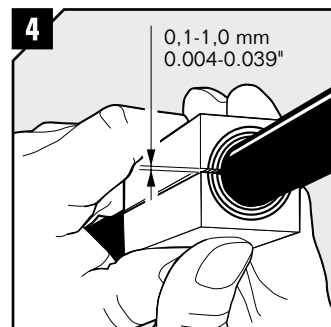
Remove any dirt inside the frame.



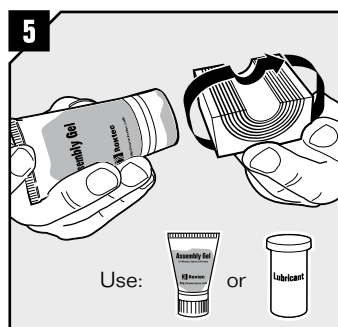
Lubricate the inside surfaces of the frame with Roxtec Assembly Gel or Roxtec Lubricant, especially into the corners.



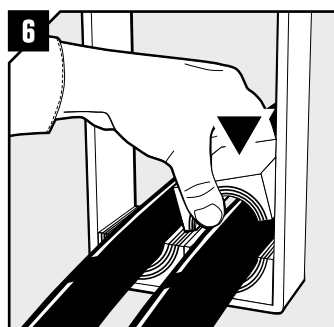
Adapt modules which are to hold cables or pipes by peeling layers until you reach the gap seen in pic. 4.



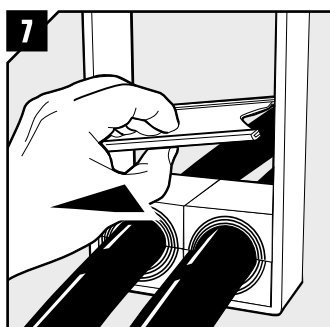
Achieve a 0.1-1.0 mm (0.004-0.039") gap between the two halves when held against the cable/pipe.



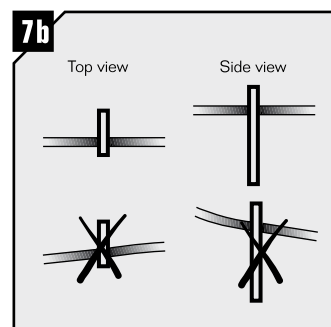
Lubricate all modules for the frame thoroughly, both the inside and the outside surfaces.



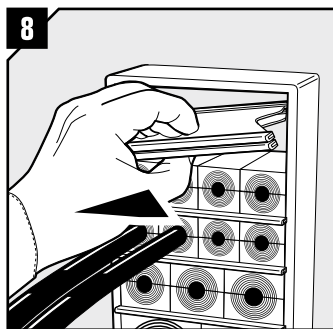
Insert the modules according to your installation plan (transit plan). Usually start with the largest modules.



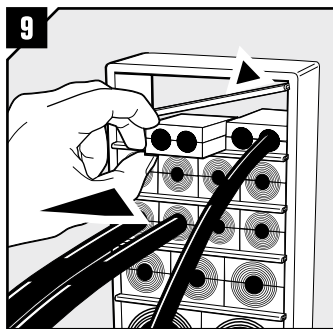
Insert a stayplate on top of the finished row of modules.



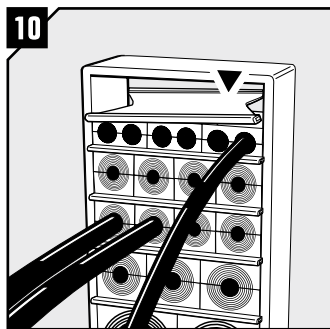
Note that cables shall go straight through the frame.



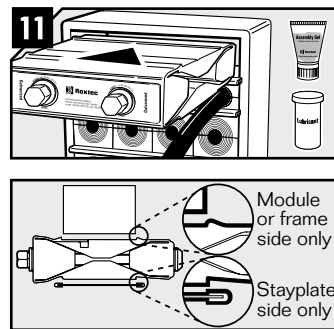
Before inserting the final row of modules, insert two stayplates.



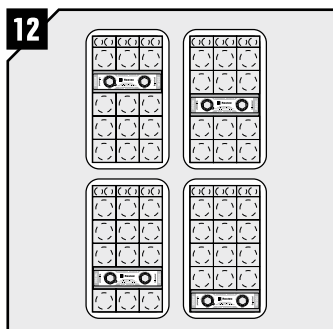
Separate the two stayplates and insert the final row of modules between the stayplates.



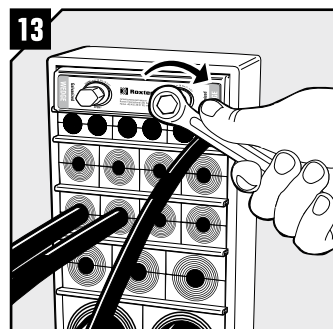
Drop the upper stayplate on top of the modules.



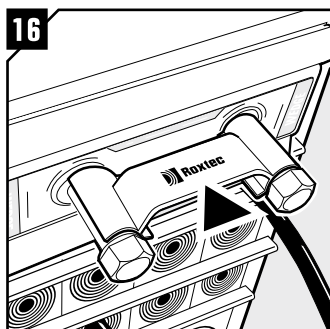
Lubricate all sides of the wedge sparsely, except front and back. Please read the markings on the wedge and turn it correctly before inserting it in the top of the frame (standard position). Face with "Stayplate this side" must always face a stayplate.



Note that the Roxtec Wedge can be placed anywhere in the frame.



Tighten the screws until full stop, approx. 20 Nm (15 ft.lb).



Attach the Wedge Clip to the wedge bolts to check that the wedge has been properly tightened.

Disassembly instruction

Reverse order

Note

- For optimum reliability, wait 24 hours or longer after installation before exposing the cables/pipes to strain or pressure.
- To be used with: RM components.
- To simplify installation in combination frames, fill all openings before tightening the wedge.



Thorne & Derrick
+44 (0) 191 410 4292
www.powerandcables.com

DISCLAIMER

"THE ROXTEC CABLE ENTRY SEALING SYSTEM ("THE ROXTEC SYSTEM") IS A MODULAR BASED SYSTEM OF SEALING PRODUCTS CONSISTING OF DIFFERENT COMPONENTS. EACH AND EVERY ONE OF THE COMPONENTS ARE NECESSARY FOR THE BEST PERFORMANCE OF THE ROXTEC SYSTEM. THE ROXTEC SYSTEM HAS BEEN CERTIFIED TO RESIST A NUMBER OF DIFFERENT HAZARDS. ANY SUCH CERTIFICATION, AND THE ABILITY OF THE ROXTEC SYSTEM TO RESIST SUCH HAZARDS, IS DEPENDENT ON ALL COMPONENTS THAT ARE INSTALLED AS A PART OF THE ROXTEC SYSTEM. THUS, THE CERTIFICATION IS NOT VALID AND DOES NOT APPLY UNLESS ALL COMPONENTS INSTALLED AS PART OF THE ROXTEC SYSTEM ARE MANUFACTURED BY OR UNDER LICENSE FROM ROXTEC ("AUTHORIZED MANUFACTURER"). ROXTEC GIVES NO PERFORMANCE GUARANTEE WITH RESPECT TO THE ROXTEC SYSTEM, UNLESS (I) ALL COMPONENTS INSTALLED AS PART OF THE ROXTEC SYSTEM IS MANUFACTURED BY AN AUTHORIZED MANUFACTURER AND (II) THE PURCHASER IS IN COMPLIANCE WITH (A), AND (B), BELOW.

(A) DURING STORAGE, THE ROXTEC SYSTEM OR PART THEREOF, SHALL BE KEPT INDOORS IN ITS ORIGINAL PACKAGING AT A TEMPERATURE NOT EXCEEDING +70°C/158°F AND NOT BELOW -40°C/-40°F.

(B) INSTALLATION SHALL BE CARRIED OUT IN ACCORDANCE WITH

ROXTEC ASSEMBLY INSTRUCTION IN EFFECT FROM TIME TO TIME.

THE PRODUCT INFORMATION PROVIDED BY ROXTEC DOES NOT RELEASE THE PURCHASER OF THE ROXTEC SYSTEM, OR PART THEREOF, FROM THE OBLIGATION TO INDEPENDENTLY DETERMINE THE SUITABILITY OF THE PRODUCTS FOR THE INTENDED PROCESS, INSTALLATION AND/OR USE.

ROXTEC GIVES NO GUARANTEE FOR THE ROXTEC SYSTEM OR ANY PART THEREOF AND ASSUMES NO LIABILITY FOR ANY LOSS OR DAMAGE WHATSOEVER, WHETHER DIRECT, INDIRECT, CONSEQUENTIAL, LOSS OF PROFIT OR OTHERWISE, OCCURRED OR CAUSED BY THE ROXTEC SYSTEMS OR INSTALLATIONS CONTAINING COMPONENTS NOT MANUFACTURED BY AN AUTHORIZED MANUFACTURER.

ROXTEC EXPRESSLY EXCLUDES ANY IMPLIED WARRANTIES OF MERCHANTABILITY AND FITNESS FOR A PARTICULAR PURPOSE AND ALL OTHER EXPRESS OR IMPLIED REPRESENTATIONS AND WARRANTIES PROVIDED BY STATUTE OR COMMON LAW. USER DETERMINES SUITABILITY OF THE ROXTEC SYSTEM FOR INTENDED USE AND ASSUMES ALL RISK AND LIABILITY IN CONNECTION THEREWITH. IN NO EVENT SHALL ROXTEC BE LIABLE FOR CONSEQUENTIAL, PUNITIVE, SPECIAL, EXEMPLARY OR INCIDENTAL DAMAGES."



Roxtec International AB
Box 540, 371 23 Karlskrona, SWEDEN
PHONE +46.455.36 67 00, FAX +46.455.820 12
EMAIL info@se.roxtec.com, www.roxtec.com