



THORNE &
DERRICK
INTERNATIONAL

Thorne & Derrick
+44 (0) 191 410 4292
www.powerandcables.com

House service cut outs





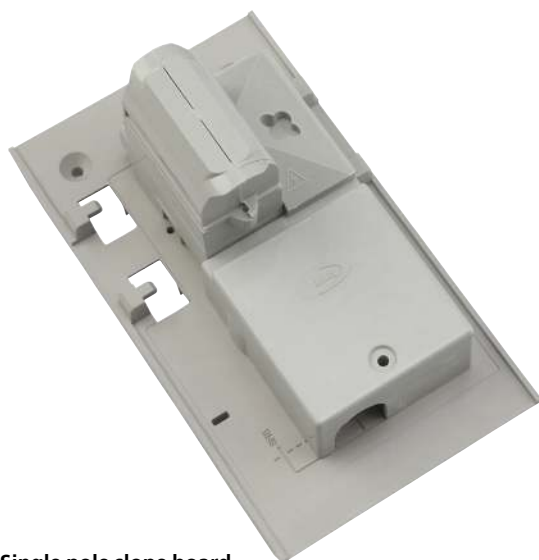
House service cut outs

Lucy Electric house service cut outs cater for single and triple pole installations and offer reversible mounting in Combined Neutral and Earth (CNE) or Separate Neutral and Earth (SNE) configurations. A choice of cable protection or sealing chamber accessories provide the required levels of security, whether it is for existing or new installations.

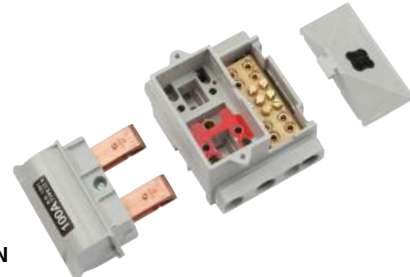
Designed and tested to BS 7657:2010, the HSCOs are manufactured from tough, impact resistant glass fibre polyester material with heavy duty brass terminals. Variants are offered for 60 / 80A applications with 22mm diameter fuse clips or 100A applications with 30mm diameter clips. Close coupled HSCOs which mate directly to the meter housing are also available to counter instances of theft of supply.

Presented as part of single pole or triple pole kits, flame retardant slope board assemblies more suited to new builds where the service cable runs up the outside of the dwelling as opposed to in the cavity. They still allow full reversibility of the cut outs i.e. with neutral mounted on the left or on the right.

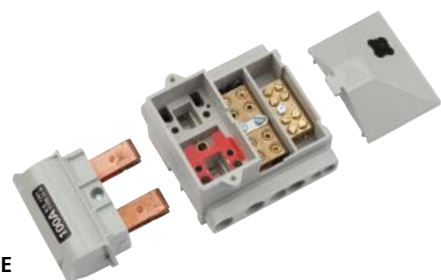
Incorporating an innovative insulated gaiter to protect the live conductor ends, a dedicated derivative allows live cabling during the replacement of cast iron cut outs on PILC cables. The cable chamber lower half has an obround multi entry grommet which is split such that it can easily be slipped around the PILC cable without resetting and potentially damaging the cores and gives a choice of three positions for the cable. Reversibility of the cut out is again easily performed and unused entries in the grommet are blocked off with plugs.



Single pole slope board
with SPN HSCO



HSCO SPN



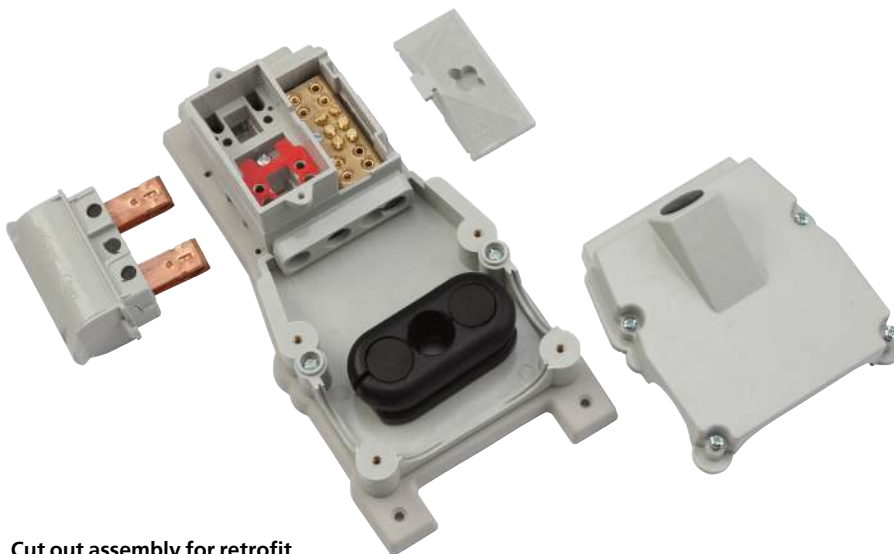
HSCO SPNE



- Full reversibility of all SP and TP units through identical sized incoming and outgoing flanges accepting installations with phase on the left or right hand side
- Internal red tab can be repositioned on top or bottom of unit to identify incoming phase
- Silver plated brass terminals for phase contacts
- Two brass M8 terminal screws with 3mm hexagon head pinching screws (slotted for Earth) for all phase and neutral terminations
- Dual Phase and Neutral terminals with 35mm² conductor capacity
- Serrated terminal bores to ensure optimum conductivity and conductor retention
- Interlocked mouldings preventing access to live components whilst tamper proof seals are in place
- Blanking plugs for unused terminal ways
- Insulated busbar extension accessory available
- Two lugs for wire sealing of fuse handle
- Full range of cable housing accessories available
- SWA / AWA glanding kit can be fitted to cable chambers

Connection accessories

- SPNE and TPNE cable covers
- SP and TP cable sealing chambers
- Anti-tamper brass tab accessory prevents access to protection chamber fixing screws



**Cut out assembly for retrofit
to PILC installations**