

Underground Distribution

Fuse Service Equipment

Series 6 House Service Cut-outs (SNE) 240V/415V

Compliant to BS 7657: 2010, the well-established Series 6 range sets the standard for safety and convenience, for 240/415V House Service Cut-outs. It is especially suited to Separate Neutral and Earth (SNE) Systems.

Simple to install, the range comprises a single-pole and a single-pole-and-neutral and Earth model. The Cut-outs may be combined to form triple pole sets. All models can be rated up to 100A.

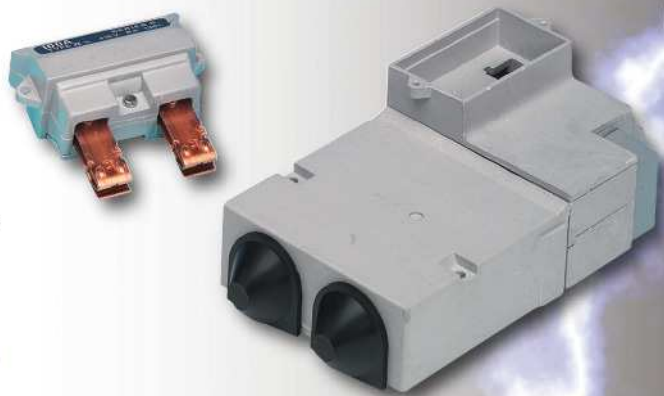
Socket-headed terminal screws (operated by a custom designed screwdriver) give positive engagement every time. In addition, all the phase terminal screws are held captive in the base of each unit.

As an alternative to fitting a fuselink, we can provide a solid link version, which is denoted by a red coloured carrier.

Sharply serrated double entry phase and neutral terminals are suitable for Aluminium or Copper conductors up to 35mm².

Fuse-clips are precision designed to ensure low contact resistance every time.

The busbarring in of new supplies is quick, safe and simple with our uniquely designed Busbar, which interconnects via the incoming cable entry ports of each unit.

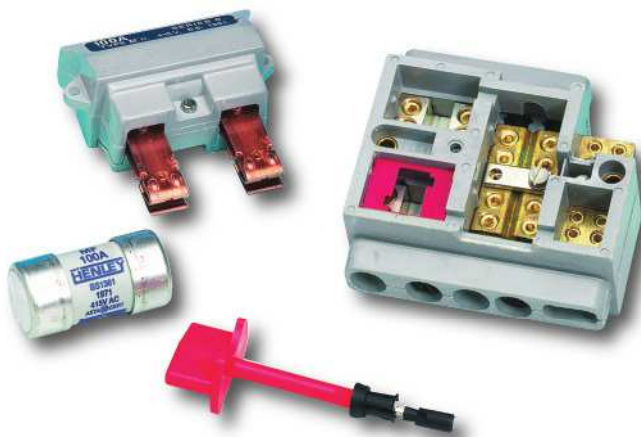


- Glass Reinforced Polyester (GRP) mouldings give high mechanical strength and will neither support combustion or track at working voltage.
- Busbarring facilities by means of an insulated Busbar which interconnects via the cable entry ports.
- CNE link, fitted in open position, closed by removing knockout between neutral and earth terminals and relocating link.

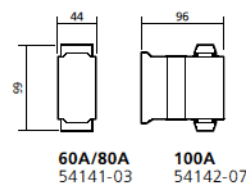
Underground Distribution Fuse Service Equipment

| Description | Product Code | |
|--|---|-------------------------|
| Single Pole Cut-out | 60/80A 54141-03 | 100A 54142-07 |
| Single Pole and Neutral (with separate earth terminal & CNE link in open position) | 54143-08 | 54144-04 |
| Protection Chambers (with 2 PVC Bushes and blank entries) | | |
| For Single Pole and Neutral and Earth set | 54317-01 | |
| For Triple Pole and Neutral and Earth set | 54318-02 | |
| Accessories and Spares | | |
| 2 way Busbar | 54382-85 | |
| Fuse Carriers | 60/80A 54365-10 | 100A 54365-13 |
| Insulated Hexagon Headed Screwdriver | 53485-36 | |
| Solid link in red carrier (used in place of fuselink) | 54365-05 | |
| Fuselink BSHD 60269-3:2010, BS 88-3:2010 | | |
| 16 x 22 x 57mm to suit 60/80A Carrier | 16 x 30 57mm to suit 100A Carrier | |
| 30A 58332-04 | 30A | 58332-30 |
| 60A 58333-07 | 60A | 58333-11 |
| 80A 58334-08 | 80A | 58334-04 |
| 100A 58334-09 | 100A | 58334-06 |
| Isolator | | |
| Single Pole and Neutral and Earth (fitted with red solid link carrier) | 54361-01 | |
| Maximum Cable Sizes | | |
| Phase and Neutral (incoming and outgoing) | 35mm ² | |
| Earth | 25mm ² | |
| Time switch | 10mm ² | |

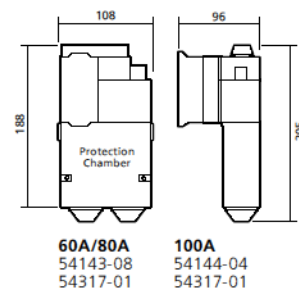
Note: For single-pole-and-neutral and triple-pole-and-neutral sets, the Cut-outs and protection chambers are supplied as separate items for on site assembly



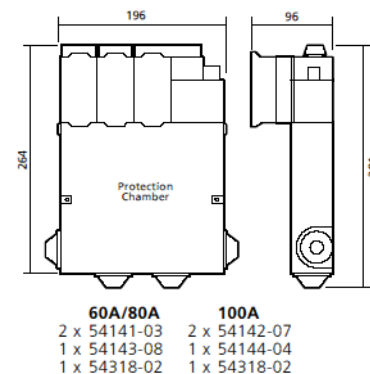
Single Pole



Single Pole and Neutral and Earth Set

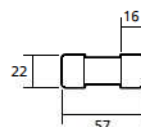


Triple Pole and Neutral and Earth Set



All dimensions in mm

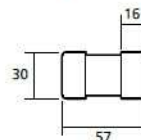
Fuselink to BSHD 60269-3:2010, BS 88-3:2010
for use with 60A/80A carrier



Fuselinks available
from 20-80 amps

All dimensions in mm

Fuselink to BSHD 60269-3:2010, BS 88-3:2010
for use with 100A carrier



Fuselinks available
from 30-100 amps

All dimensions in mm



**THORNE &
DERRICK
INTERNATIONAL**

Thorne & Derrick
+44 (0) 191 410 4292
www.powerandcables.com