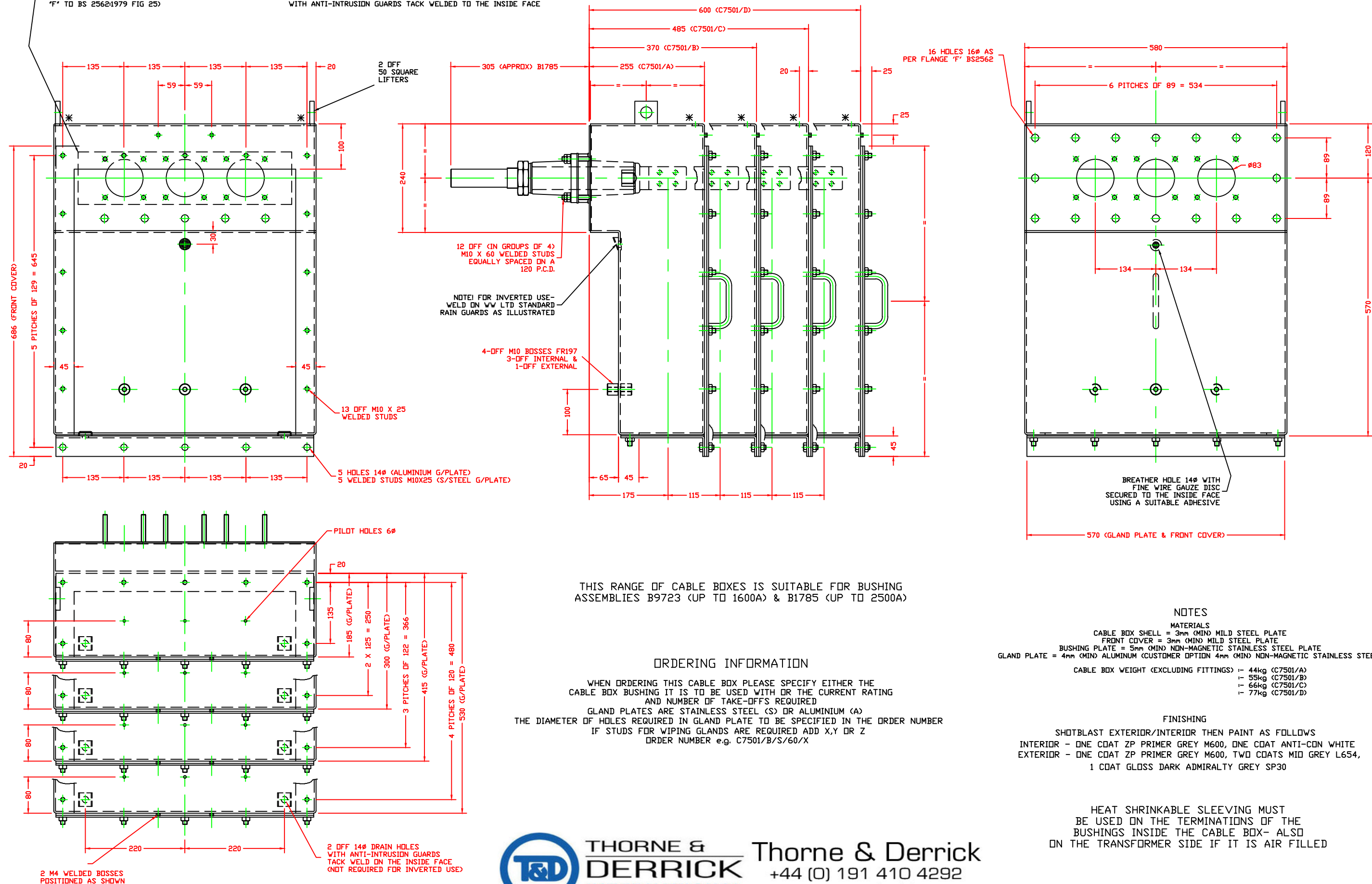


THE BROKEN LINES INDICATE THE POSITION & FORM
OF THE TRANSFORMER MOUNTING FACING (FLANGE STYLE
'F' TO BS 2562:1979 FIG 25)

NOTE! WHEN THE BOX IS REQUIRED FOR INVERTED USE
DRILL 2 HOLES 14Ø IN POSITION SHOWN THUS *
WITH ANTI-INTRUSION GUARDS TACK WELDED TO THE INSIDE FACE



**THORNE &
DERRICK**
INTERNATIONAL

Thorne & Derrick
+44 (0) 191 410 4292
www.powerandcables.com

TOLERANCES UNLESS OTHERWISE STATED	
UN-MACHINED CASTINGS	± 2
UN-MACHINED STAMPINGS	± 1
CUT-OFF LENGTHS	± 1
MACHINED DIMENSIONS	± 0.2
FABRICATION DIMENSIONS	± 3

W	WEBSTER-VILKINS LTD PARK AVENUE, HASELEY TELFORD SHROPSHIRE ENGLAND
REV. A	DATE 22/02/10

3 POLE 1 / 12 GLAND CABLE BOX ASSY FOR USE UP TO 12kV 2500A (PI)	DRG NO. C7501 CODE NO. N/A
DRAWN KJP	APPROVED SW
SCALE 1:4	

DRG NO. C7501 CODE NO. N/A

REVISION NOTES
A/ DESIGN STANDARDISED WITH LIFTERS AND EARTHING BOSSES. FRONT COVER SHORTER, IDENT PLATE (4M BOSSES) NOW FIXED TO BOX. ORDERING INFORMATION NOW INCLUDES HOLE DIA IN GLAND PLATE 22/02/10 KJP