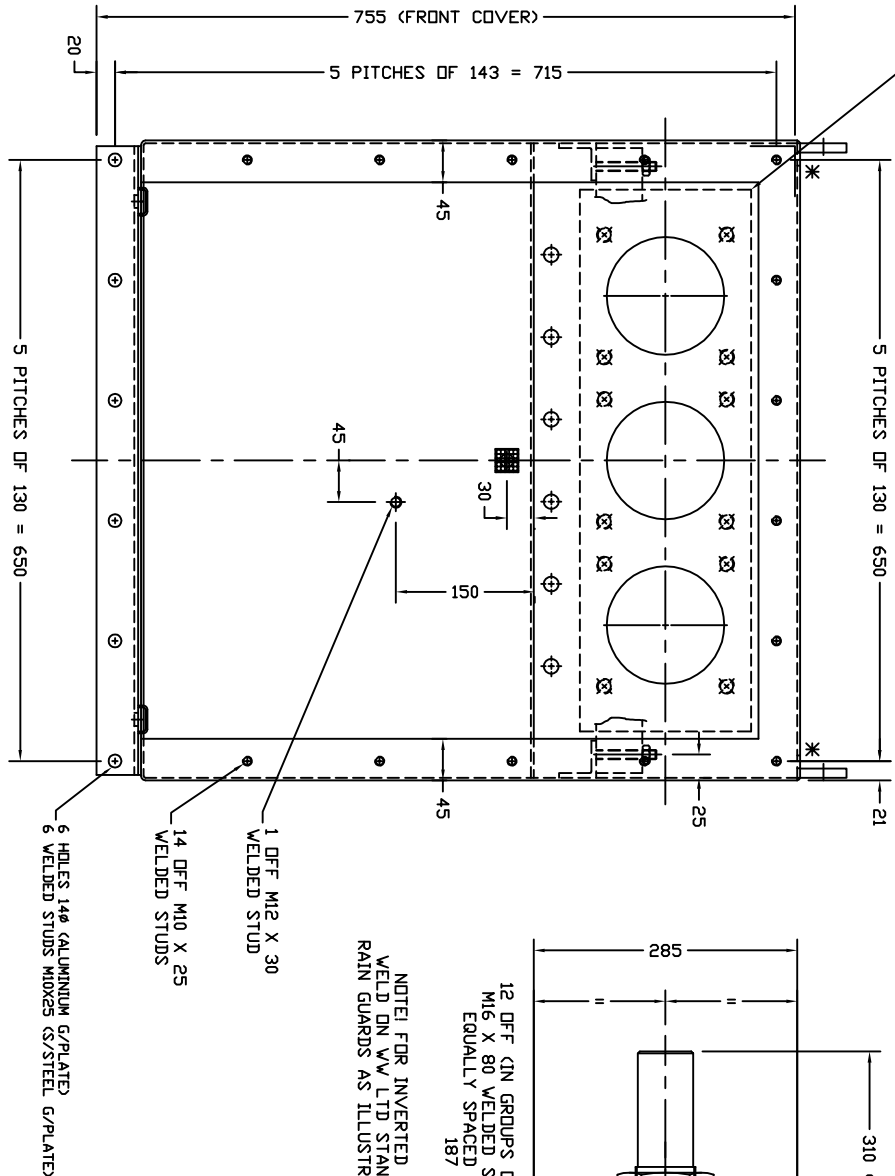
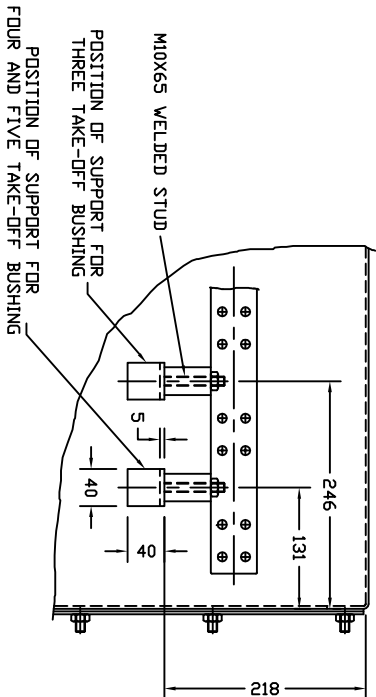


THE BROKEN LINES INDICATE THE POSITION & FORM
OF THE TRANSFORMER MOUNTING FACING (FLANGE STYLE
'J' TO BS 2562:1979 FIG 25)

NOTE! WHEN THE BOX IS REQUIRED FOR INVERTED USE
DRILL 2 HOLES 14Ø IN POSITION SHOWN THUS *
WITH ANTI-INTRUSION GUARDS TACK WELDED TO THE INSIDE FACE



PALM SUPPORT ARRANGEMENT (3,4 & 5 T/OFF)



WHEN MOUNTING BUSHINGS PLEASE MACHINE BUSHING CLAMPS TO ENSURE THEY FIT
WITHIN A WINDOW FRAME OFF 586mm X 185mm

NOTES

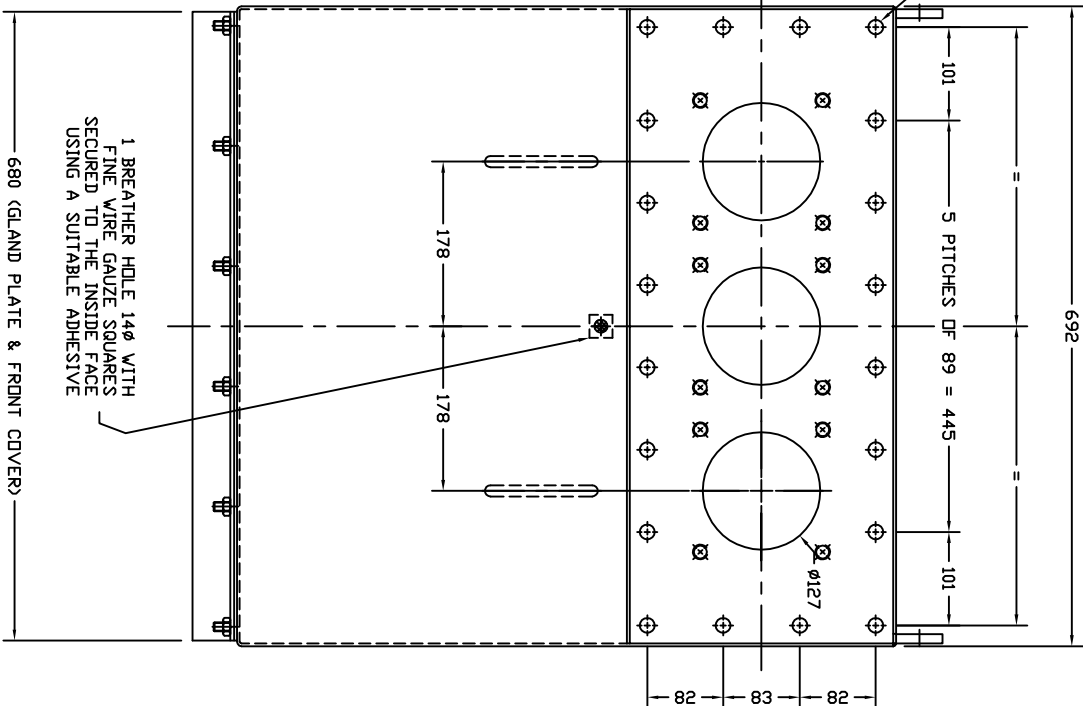
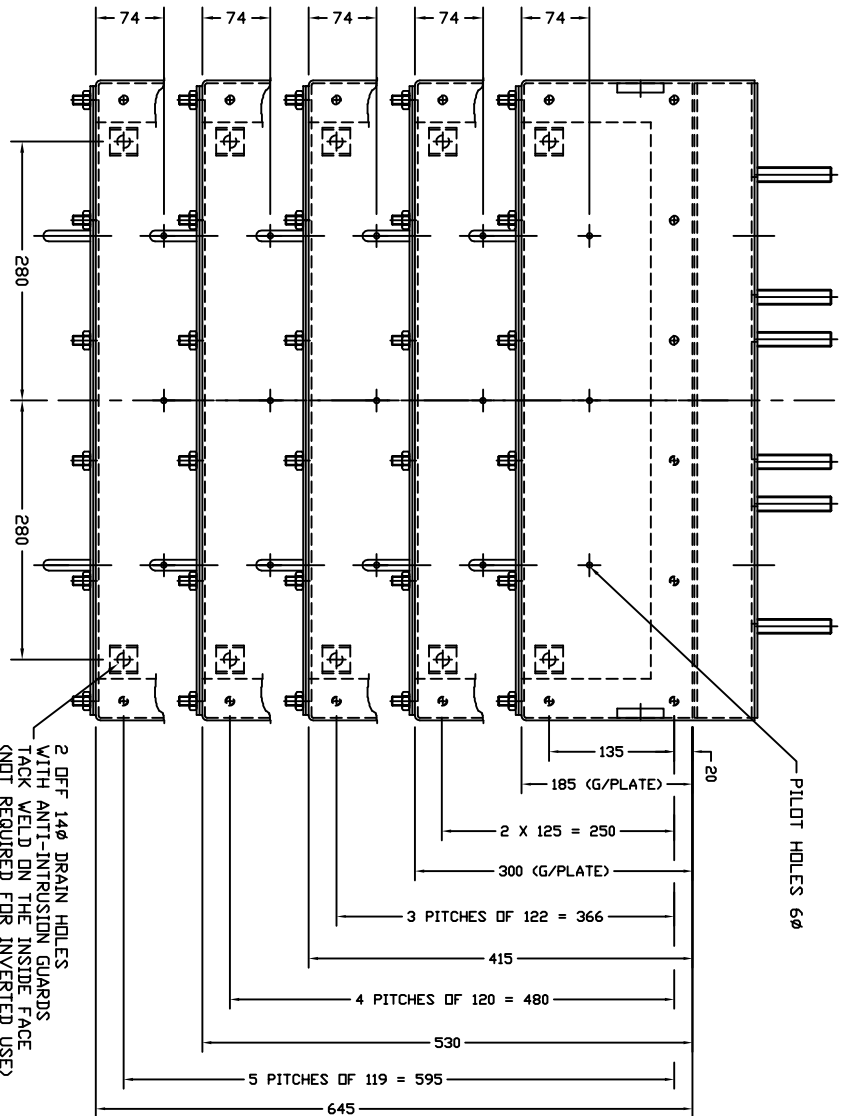
MATERIALS
CABLE BOX SHELL = 3mm (MIN) MILD STEEL PLATE
FRONT COVER = 3mm (MIN) MILD STEEL PLATE
BUSHING PLATE = 6mm (MIN) NON-MAGNETIC STAINLESS STEEL PLATE
GLAND PLATE = 4mm (MIN) ALUMINIUM (CUSTOMER OPTION 4mm (MIN) NON-MAGNETIC STAINLESS STEEL)

FINISHING
SHOTBLAST EXTERIOR/INTERIOR THEN PAINT AS FOLLOWS
ONE COAT ZINC BASE RED OXIDE PRIMER ONE COAT LIGHT GREY
UNDERCOAT (EXTERIOR ONLY) - PAINT THE INTERIOR WITH ANTI-CONDENSATION FINISH

THIS RANGE OF CABLE BOXES IS SUITABLE FOR BUSHING
ASSEMBLIES B2503 (UP TO 4000A)

ORDERING INFORMATION
WHEN ORDERING THIS CABLE BOX PLEASE SPECIFY EITHER THE
CABLE BOX BUSHING IT IS TO BE USED WITH OR THE CURRENT RATING
AND NUMBER OF TAKE-OFFS REQUIRED
IF STAINLESS STEEL GLAND PLATES ARE REQUIRED PLEASE ADD /S DMTD
DRAWING NUMBER e.g. C7502/B/S

HEAT SHRINKABLE SLEEVING MUST
BE USED ON THE TERMINATIONS OF THE
BUSHINGS INSIDE THE CABLE BOX- ALSO
ON THE TRANSFORMER SIDE IF IT IS AIR FILLED



REVISION NOTES
1/ REVISIONS REGARDING EXISTING BUSHINGS MOUNT WITHIN THE TRANSFORMER OPENING. 1057 31/08/06
2/ OPTION D ADDED LITTERS AND JOUR HANDLES ADDED. 27/07/11 K.P.
3/ BUSHING MOUNTING STUDS WERE M12 NOW M16. 18/11/11 K.P.

THORNE &
DERRICK
INTERNATIONAL

Thorne & Derrick
+44 (0) 191 410 4292
www.powerandcables.com

TOLERANCES UNLESS OTHERWISE STATED
UN-MACHINED CASTINGS ± 2
UN-MACHINED STAMPINGS ± 1
MACHINED DIMENSIONS ± 0.2
FABRICATION DIMENSIONS ± 3

WESTER-VALINDIA LTD
RUTLAND SHROPSHIRE ENGLAND

3 POLE 1 / 12 GLAND CABLE BOX ASSY
FOR USE UP TO 12kV 4000A (FT)

DWG NO.
C7502
CODE NO.
N/A