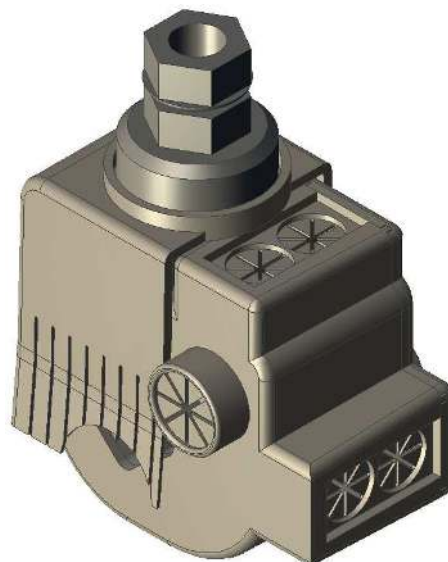


LV Fully Insulated,  
Insulation - Piercing  
Mains Service Connectors  
(with single / double service)

## MECHANICAL CONNECTORS



### CMS2 95/35, 185/35 & 300/35 Connectors



#### Principle Application:

For the LV jointing of aluminium/copper, stranded or solid service cables to sector shaped, solid/stranded, aluminium/copper mains cables.

#### Range:

Connector Reference	Core C.S.A. (mm <sup>2</sup> )		
	Mains		Service x 2
	Min.	Max.	
CMS2 95/35	70	95	4 - 35
CMS2 185/35	120	185	4 - 35
CMS2 300/35	240	300	4 - 35

Note: For jointing other core configurations/sizes please contact Sicame Engineering Dept

The **Hepworth CMS2 xxx/35** ..... range of insulated, insulation piercing connectors has been designed to improve the level of safety during live jointing by eliminating the need to remove core insulation.

They provide the end user with a quick, reliable and inherently safe method of jointing 'live' with facility to withstand service 'load pick up'.



**THORNE &  
DERRICK  
INTERNATIONAL**

**Thorne & Derrick**  
+44 (0) 191 410 4292  
[www.powerandcables.com](http://www.powerandcables.com)



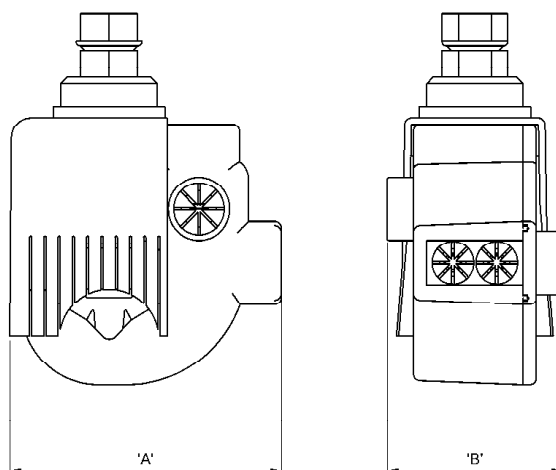
1.73d

LV Fully Insulated,  
Insulation - Piercing  
Mains Service Connectors  
(with single / double service)

## MECHANICAL CONNECTORS

### CMS2 95/35, 185/35 & 300/35 Connectors

#### Physical Dimensions



Connector Reference	Dimensions (mm)	
	'A'	'B'
CMS2 95/35	58.0	40.0
CMS2 185/35	62.0	40.0
CMS2 300/35	68.0	40.0

#### Material:

**Body:** Aluminium Alloy (Plated)

**Screws:** Brass

**Shroud:** ABS

#### Test Specification:

**BS EN61238-1 : 2003:** Compression and mechanical connectors for power cables rated up to 36KV. Class B.

Test report numbers—TTR/315, 316 & 317



THORNE &  
**DERRICK**  
INTERNATIONAL

Thorne & Derrick  
+44 (0) 191 410 4292  
[www.powerandcables.com](http://www.powerandcables.com)