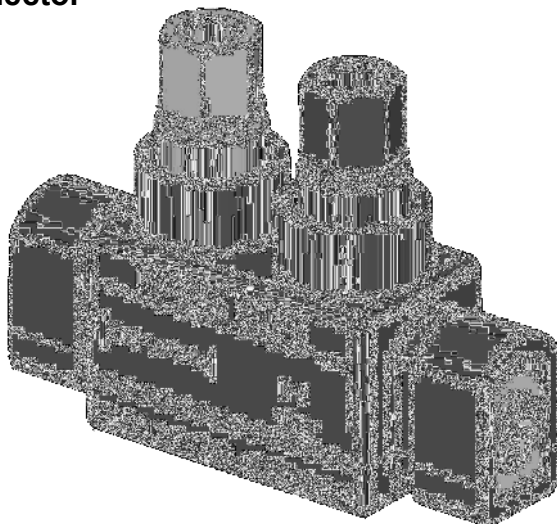


LV Fully Insulated,
In-Line Service,
Insulation Piercing
'Deferred' Connector

MECHANICAL CONNECTORS



HSC435 SED/2 Connector



Principle Application:

Stranded and solid circular service conductors.

Range:

Connector Reference	Core csa (mm ²)	
	Min	Max
HSC435 SED/2	4	35

Note: For jointing other core configurations/sizes please contact Sicame Technical Dept

The Hepworth '**HSC435 SED/2**' insulation piercing connector has been specifically designed to improve the level of safety during live jointing by eliminating the need to remove core insulation (live end).

This connector facilitates a quick, reliable and **inherently safe** method of connection whilst providing the ability to withstand 'load pick-up'.

This connector is fully torque controlled utilising the latest shear bolt technology to ensure a reliable long term connection.

The use of a connector holding tool is recommended:-



'JTN/8' Insulated Holding Tool



THORNE &
DERRICK
INTERNATIONAL

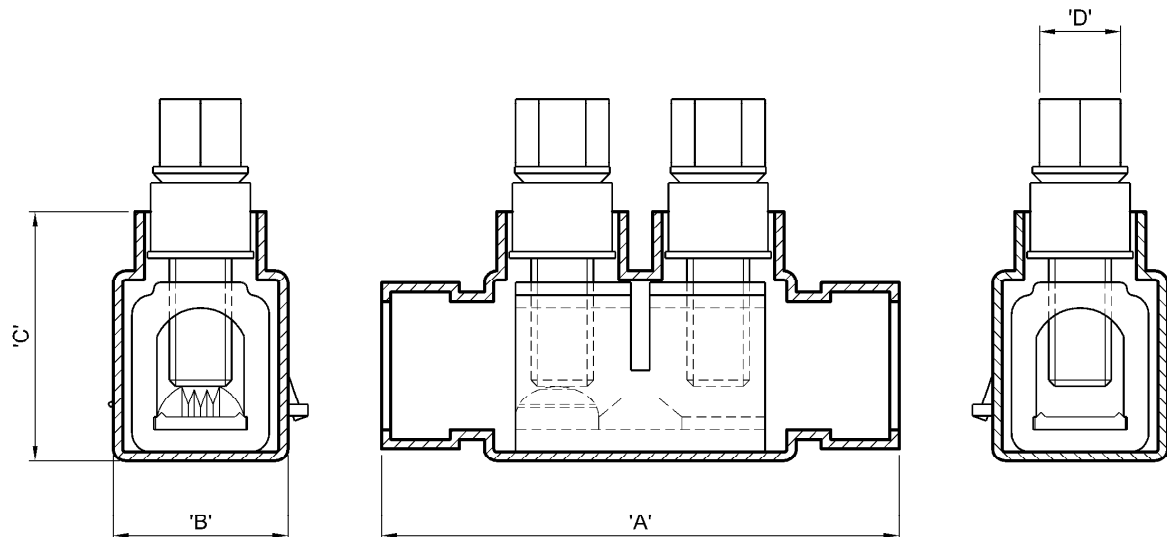
Thorne & Derrick
+44 (0) 191 410 4292
www.powerandcables.com

LV Fully Insulated,
In-Line Service,
Insulation Piercing
'Deferred' Connector

MECHANICAL CONNECTORS

HSC435 SED/2 Connector

Physical Dimensions



Connector Reference	Dimensions (mm)			
	'A'	'B'	'C'	'D'
HSC435 SED/2	83.0	28.0	40.0	13 A/F

Material:

Casing: Polypropylene

Body: Aluminium Alloy

Teeth: Copper Alloy (Tinned)

Test Specification:

Tested to BS EN 61238-1 : 2003.

Type Test Report No. TTR/290-HSC435-4C
TTR/291-HSC435-A35



THORNE &
DERRICK
INTERNATIONAL

Thorne & Derrick
+44 (0) 191 410 4292
www.powerandcables.com

1.97d