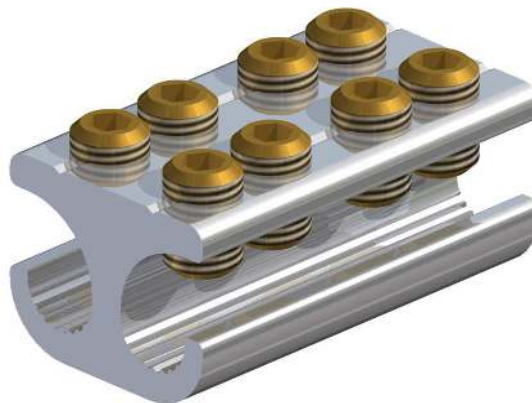


## MB21/1A XL Connector



### Principle Application:

Stranded and solid shaped service conductors.

### Range:

Product Reference	Type	Core c.s.a. (mm <sup>2</sup> )	
		Min	Max
MB21/1A XL	Branch	4*	35

Note: For jointing other core configurations/sizes please contact Sicame Engineering Dept

The **Hepworth MB21/1A XL** mechanical connector is designed for double service branch connections on stranded or solid cable. The ferrules are manufactured in tinned aluminium alloy for suitability of jointing both aluminium and copper conductor cores.

### Secondary Application:

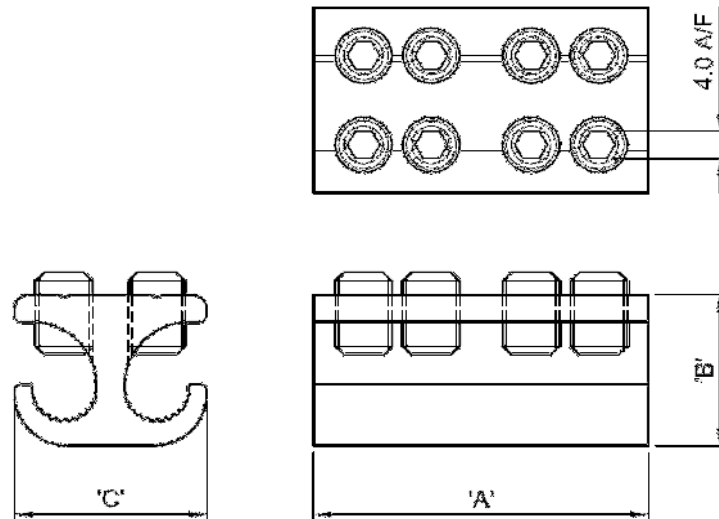
Stranded and solid circular conductors

Product Reference	Type	Core c.s.a. (mm <sup>2</sup> )	
		Min	Max
MB21/1A XL	Branch	4*	35

Note: For jointing other core configurations/sizes please contact Sicame Engineering Dept

## MB21/1A XL Connector

### Physical Dimensions



Connector Reference	Dimensions (mm)		
	'A'	'B'	'C'
MB21/1 AXL	47.0	22.0	27.0

### Material:

Aluminium Alloy (Tinned)

### Test Specification:

BS EN 61238-1. Test Report No: TTR/267 and 275

### Fitting Instructions:

1. Cut the cables to length and strip the core insulation equal to the length of the connector +3mm.
2. Thoroughly abrade all conductors to be jointed.
3. Align cores within connector and tighten screws on each side of the connector consecutively, until tight.

### Note:

\* Conductor cores 4mm<sup>2</sup> and below should be doubled, and if necessary doubled again, to achieve the necessary cross-sectional area.