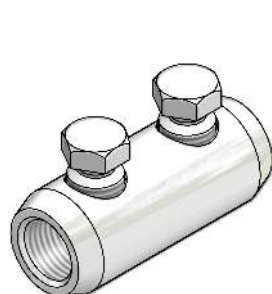


'MF20/x' Aluminium Mechanical  
In-Line Splice with Moisture/  
Contaminant Block For Low/  
Medium Voltage Applications

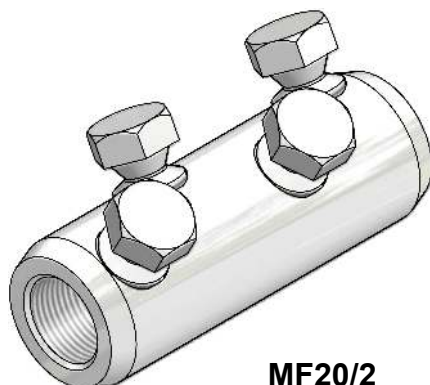
## MECHANICAL CONNECTORS



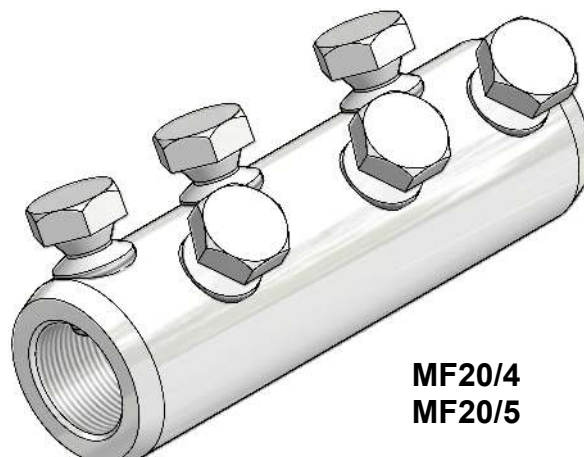
### MF20/x Aluminium In-Line Connectors



**MF20/1**



**MF20/2  
MF20/3**



**MF20/4  
MF20/5**

#### Application:

Straight jointing of circular stranded aluminium or copper conductors.

#### Cable Range:

Connector Reference	Stranded Core C.S.A. (mm <sup>2</sup> )			
	Screw Pack 1 (Assembled)		Screw Pack 2 (Alternative)	
	Min	Max	Min	Max
MF20/1	25	50	70	95
MF20/2	70	95	120	150
MF20/3	120	150	185	240
MF20/4	240	300	300	400
MF20/5	400	500	500	630

#### Product Description:

The '**MF20**' range of mechanical connectors incorporate an integral moisture/contaminant block thereby removing the possibility of migration of contaminants/moisture across the joint.

The range of connectors utilise the Hepworth shear head technology in the form of direct acting clamping bolts. 'Screw Pack 1' comes assembled with the connector with 'Screw Pack 2' available within the connector bag.

See overleaf for fitting instructions.



**THORNE &  
DERRICK**  
INTERNATIONAL

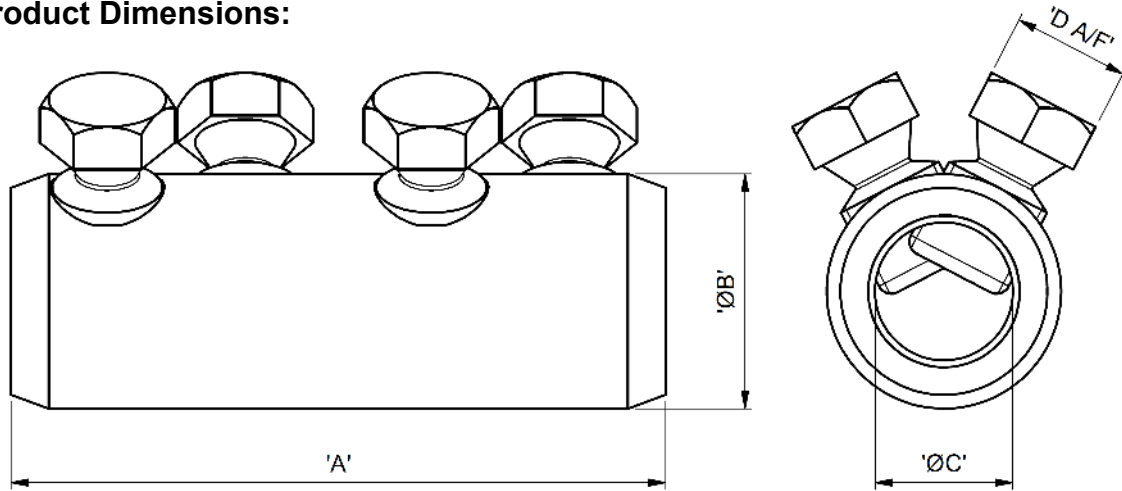
**Thorne & Derrick**  
+44 (0) 191 410 4292  
www.powerandcables.com

'MF20/x' Aluminium Mechanical  
In-Line Splice with Moisture/  
Contaminant Block For Low/  
Medium Voltage Applications

## MECHANICAL CONNECTORS

### MF20/x Aluminium In-line Connectors

#### Product Dimensions:



Connector Reference	Dimensions (mm)			
	'A'	'ØB'	'ØC'	'D A/F'
MF20/1	57	24	14	13
MF20/2	85	28	16	17
MF20/3	95	34	20	17
MF20/4	135	42	26	19
MF20/5	135	51	33	19

**Material:** Aluminium Alloy (Electro-Tinned)

**Test Specification:** BS EN 61238-1 : 2003 - Compression & Mechanical  
Connectors for power cables for rated voltages up to 36kV.

**Test Report No:** TBC

#### Fitting Instructions:

1. Strip insulation from each core equal to the depth of the bore.
2. Wire brush the exposed conductor cores and wipe clean (optional).
3. Align and position the conductor cores in each of the bores ensuring that the core is fully inserted to the centre wall.
4. Torque tighten the shear screws consecutively one turn at a time until the bolts have sheared.
5. De-burr and clean the connector as appropriate.



**THORNE &  
DERRICK**  
INTERNATIONAL

**Thorne & Derrick**  
+44 (0) 191 410 4292  
www.powerandcables.com