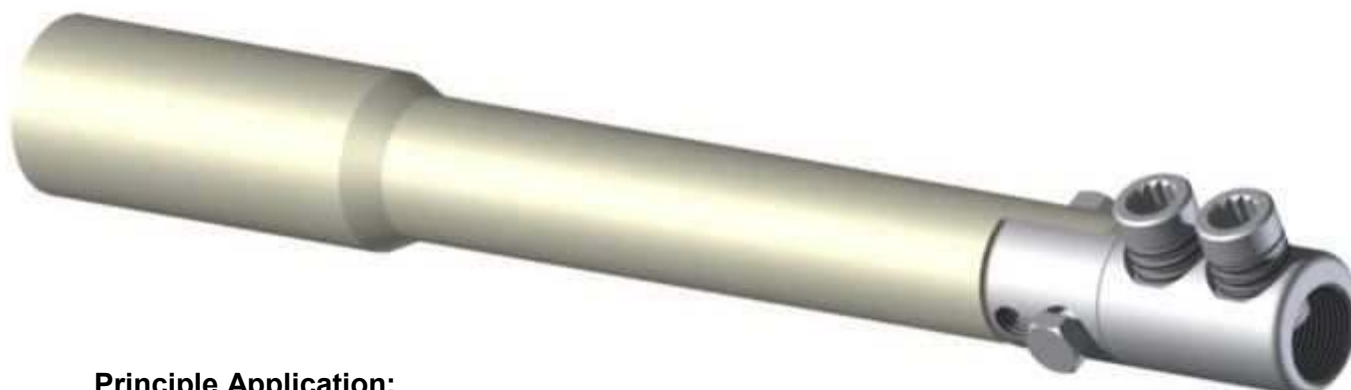


Moisture blocked stop end  
mechanical ferrule for  
medium voltage applications

## MECHANICAL CONNECTORS



### MFS18 Connectors



#### Principle Application:

Stop end jointing of stranded/solid sectoral conductors.

#### Range:

Product Reference	Core C.S.A. (mm <sup>2</sup> )			
	Stranded		Solid	
	Min	Max	Min	Max
MFS18/1	10*	95	10	70
MFS18/2	16	185	16	150
MFS18/3	70	300	70	240
MFS18/4	10*	95	10	70
MFS18/5	16	185	16	150

Note: For jointing other core configurations/sizes please contact Sicame Technical Dept

The '**MFS18**' range of mechanical connectors utilises the patented "universal" range taking shear bolts and comes complete with core stripping guides.

Suitable for all cable voltages up to and including 11000 volts.

#### Secondary Application:

Stop end jointing of stranded/solid circular cored conductors.

#### Range:

Product Reference	Core C.S.A. (mm <sup>2</sup> )			
	Stranded		Solid	
	Min	Max	Min	Max
MFS18/1	10*	95	10	185
MFS18/2	16	185	16	300
MFS18/3	70	300	70	400
MFS18/4	10*	95	10	185
MFS18/5	16	185	16	300

Note: For jointing other core configurations/sizes please contact Sicame Technical Dept



**THORNE &  
DERRICK**  
INTERNATIONAL

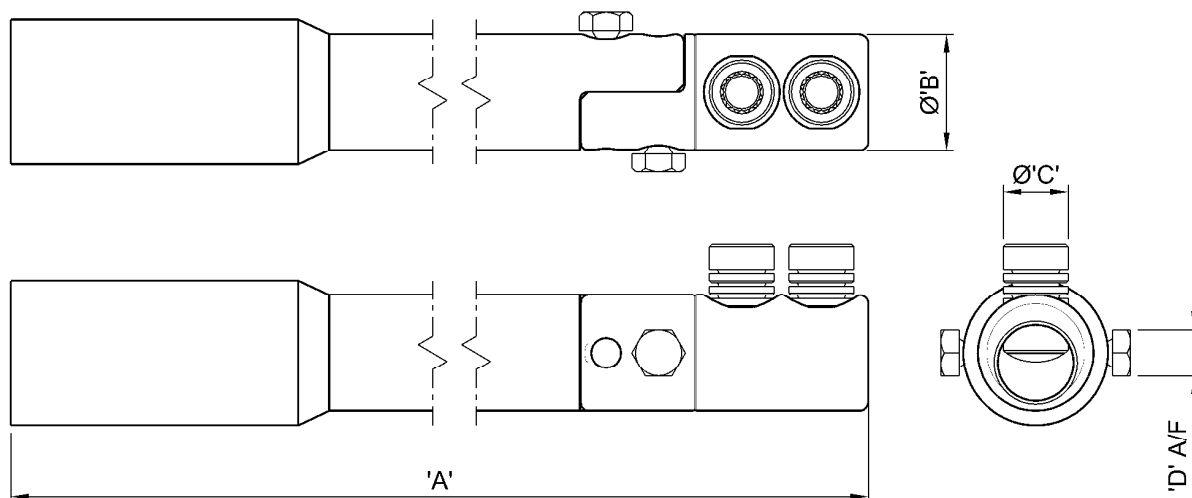
**Thorne & Derrick**  
+44 (0) 191 410 4292  
www.powerandcables.com

Moisture blocked stop end  
mechanical ferrule for  
medium voltage applications

## MECHANICAL CONNECTORS

### MFS18 Connectors

#### Physical Dimensions



Product Reference	Dimensions (mm)			
	'A'	Ø'B'	Ø'C'	'D' A/F
MFS18/1	337.0	28.0	M16	13mm
MFS18/2	337.0	32.0	M18	13mm
MFS18/3	349.0	37.5	M18	13mm
MFS18/4	382.0	28.0	M16	13mm
MFS18/5	382.0	32.0	M18	13mm

**Material:** Aluminium Alloy / Polyethylene

**Test Specification:** Engineering Recommendation C79 / IEC 1238-1.

#### Fitting instructions:

1. Strip insulation from each core equal to the depth of the bore guide + 5mm.
2. Thoroughly abrade exposed conductor cores. (See note).
3. Place the connector onto the conductor core, tighten the universal shear bolts consecutively one turn at a time until both bolts have sheared, using the correct tightening tool and holding tool.
4. De-burr and clean the connector as appropriate ensuring the profile of the screws are level with the connector body and leaving no sharp edges.

**Note:** When jointing copper conductor, wrap the core with the brass gauze supplied prior to installation.

Conductor cores 10mm<sup>2</sup> and below should be doubled to achieve the necessary cross-sectional area.

**IMPORTANT:** Please note when using the MFS connectors in joints nominally rated in excess of 3.3kV, it is essential that the Jointing System Supplier's instructions for stress relieving and re-insulation techniques are strictly adhered to.