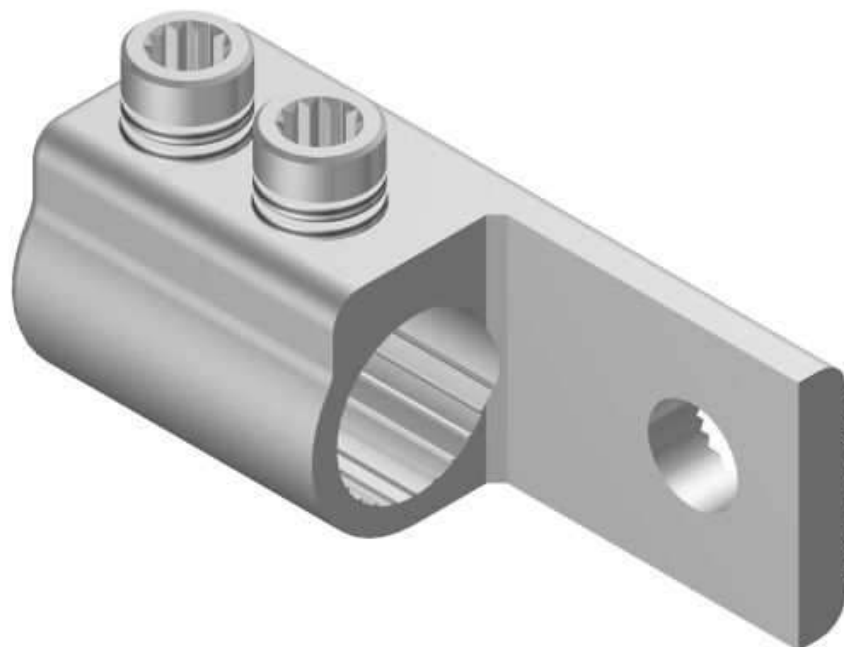


ML6 Connectors**Principle Application:**

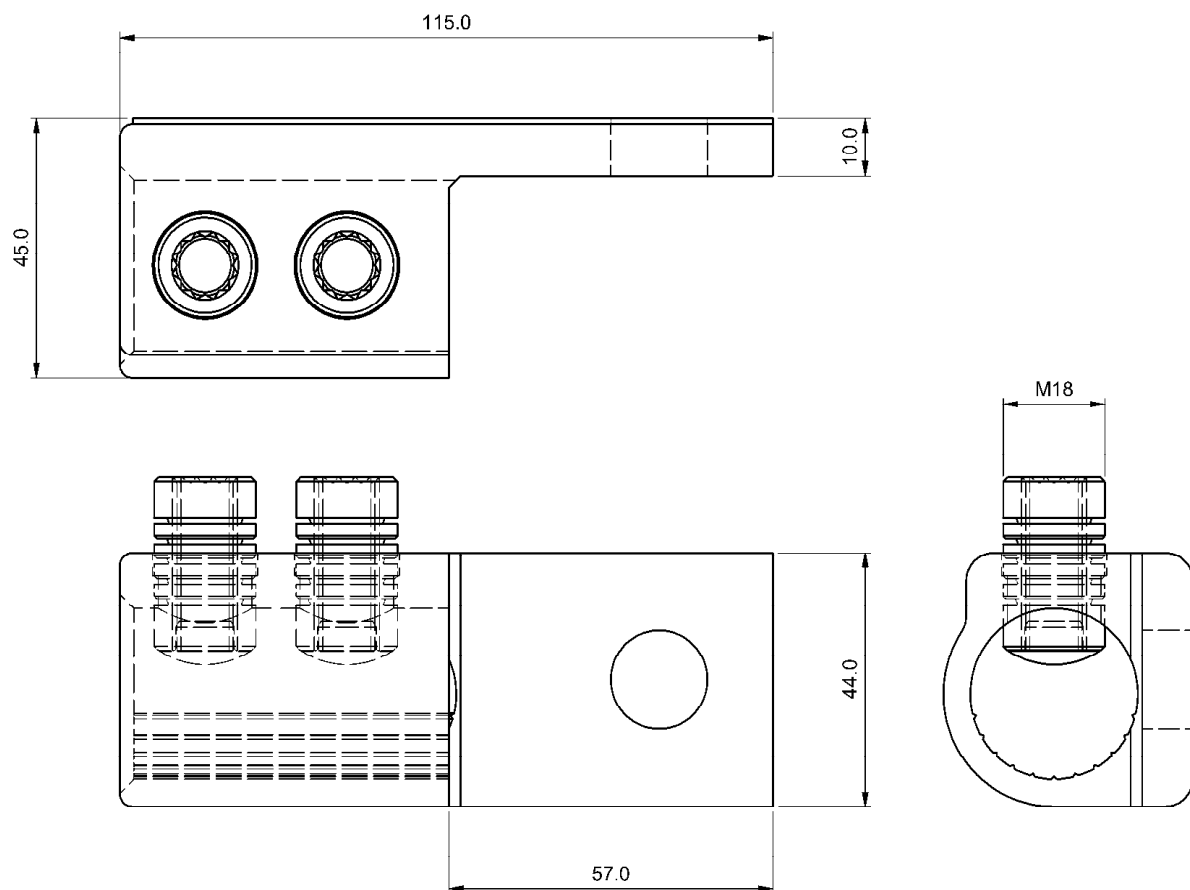
Termination of solid cored conductors.

Range:

Product Reference	Stranded Core C.S.A. (mm ²)		Stud Size
	Min	Max	
ML6-16	480 (4 x 120)	600	M16
ML6-20	480 (4 x 120)	600	M20

ML6 Connector

Physical Dimensions



Material:

Aluminium Alloy