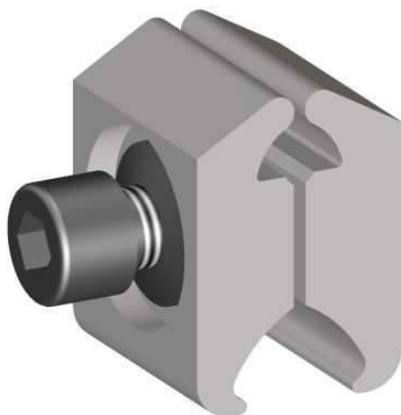
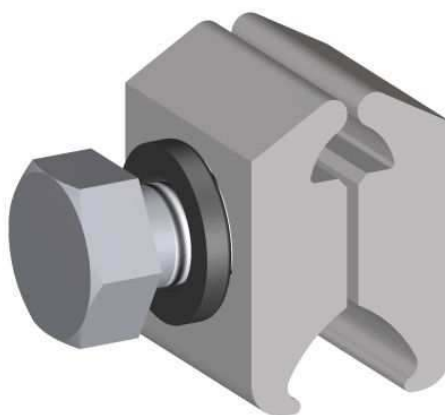


P3 to P9 Connectors**P3(H) to P9(H) Connectors****Principle Application:**

Service connections from solid sector aluminium main conductors.

Range:

Mains Core Size	Service Core Size													
	From 3-Core Mains							From 4-Core Mains						
	Stranded Copper				Circ. Solid Aluminium			Stranded Copper				Circ. Solid Aluminium		
mm ²	4	16	25	35	16	25	35	4	16	25	35	16	25	35
70	P3	P3	P3	-	P3	P3	P3	P3	P3	P3	-	P3	P3	P3
95	P3	P3	P3	P3	P3	P3	P3	P3	P3	P3	P3	P3	P3	P3
120	P4	P4	P4	P3	P4	P4	P4	P3	P3	P3	P3	P3	P3	P3
150	P4	P4	P4	P4	P4	P4	P4	P4	P4	P4	P4	P4	P4	P4
185	P6	P6	P6	P6	P6	P6	P6	P5	P5	P5	P4	P5	P5	P5
240	P7	P7	P7	P7	P7	P7	P7	P6	P6	P6	P6	P6	P6	P6
300	P8	P8	P8	P8	P8	P8	P8	P9	P9	P9	P9	P9	P9	P9

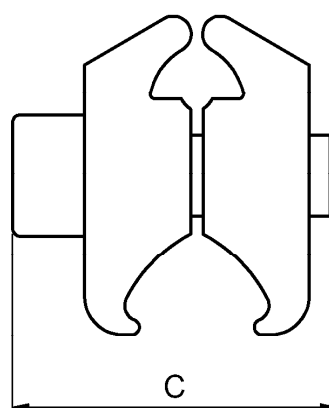
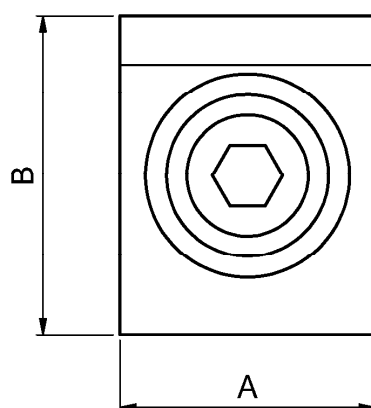
The **Hepworth 'P'** and '**P(H)**' range of connectors provides a well established method of connecting service cables in the above range to solid sector aluminium mains cables.

Each connector is supplied complete with brass gauze as standard, in a sealed pack. Details of fitting procedures are included with the technical data overleaf.

NOTE: If required the P3 - P9 connectors can also be supplied with 13mm A/F hexagon head set screws, **Product code P3H - P9H**.

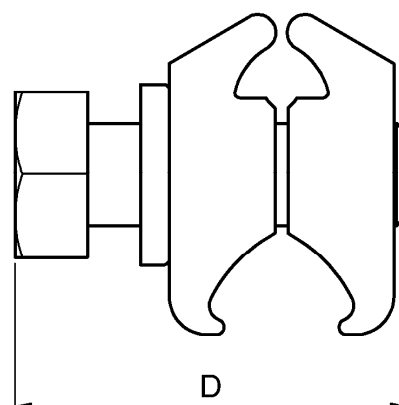
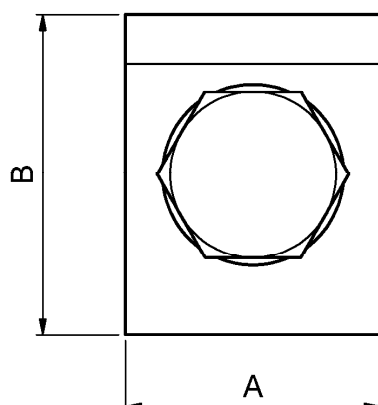
P3 to P9 Connectors

Physical Dimensions



P3(H) to P9(H) Connectors

Physical Dimensions



Ref. Code	Dimensions (mm)			
	A	B	C	D
P3	20	25	26	30.5
P4	20	26	32	30.5
P5	20	26	32	35.5
P6	20	28	32	35.5
P7	20	27	32	35.5
P8	20	30	35	40.5
P9	20	30	35	40.5

Material:

Aluminium Alloy.

Fitting Instructions:

Strip the insulation from the mains core at the required position using the length of the connector as a guide and thoroughly abrade the exposed conductor. Cut the service cable to length, remove the insulation and abrade the conductor. Loosely fit the connector, ensuring that the mains and service conductors are correctly aligned. Fully tighten the socket head screw using a 3/16" A/F hexagonal drive or 13mm A/F ratchet spanner.

Stranded service conductors below 16mm² should be doubled and redoubled and, if copper service conductors are to be jointed, they should be wrapped in brass gauze. This not only improves the electrical stability of the interface connection, but also helps to contain the strands to prevent splaying.