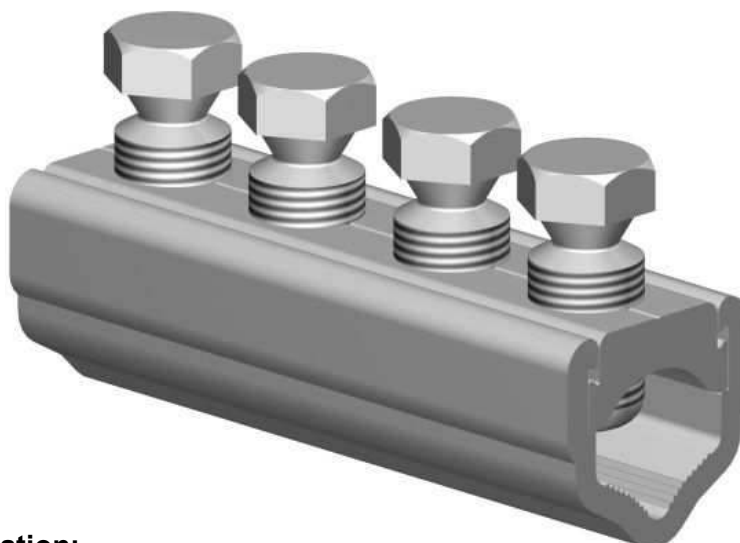


Straight-through mains  
connectors

## MECHANICAL CONNECTORS



### UM95, UM95XL, UM185, UM185XL, UM300 & UM300XL Connectors



#### Principle Application:

For LV straight jointing of sector/round, stranded/solid, aluminium/copper conductor cores.

#### Range:

Connector Reference	Core c.s.a. (mm <sup>2</sup> )	
	Min	Max
UM95	25	95
UM95XL		
UM185	35	185
UM185XL		
UM300	70	300
UM300XL		

Note: For jointing other core configurations/sizes please contact Sicame Technical Dept

The **Hepworth UMxxx / UMxxxXL** ..... range of straight through mains connectors accommodates an extensive range of LV cable styles and sizes.

The connector utilises the proven shear head, direct acting bolts (plated) thereby removing the need for pressure plates.

The plated bolts, combined with a standard plated yoke section, allow for the jointing of copper conductor cores without the need for conventional brass gauze.

**Note:** For the jointing of CNE strands add the suffix 'N' to the end of the product code, pressure pads will then be included.



THORNE &  
**DERRICK**  
INTERNATIONAL

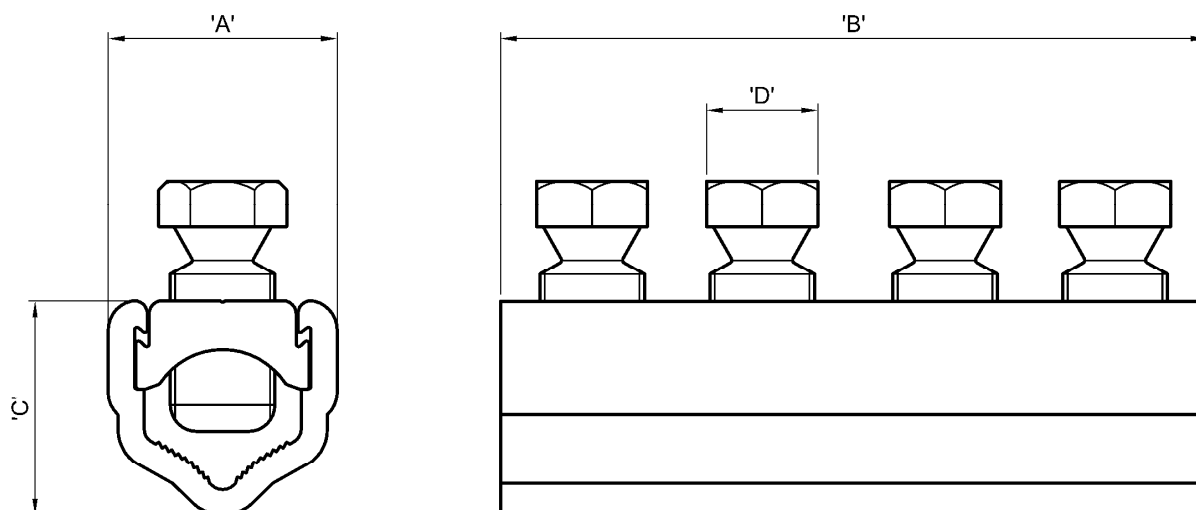
Thorne & Derrick  
+44 (0) 191 410 4292  
[www.powerandcables.com](http://www.powerandcables.com)

Straight-through mains  
connectors

## MECHANICAL CONNECTORS

### UM95, UM95XL, UM185, UM185XL, UM300 & UM300XL Connectors

#### Physical Dimensions



Connector Reference	Dimensions (mm)			
	'A'	'B'	'C'	'D'
UM95	26.0	86.0	24.5	13 A/F
UM95XL	26.0	106.0	24.5	13 A/F
UM185	35.0	108.0	33.0	17 A/F
UM185XL	35.0	128.0	33.0	17 A/F
UM300	41.0	120.0	40.0	17 A/F
UM300XL	41.0	140.0	40.0	17 A/F

#### Material:

Aluminium Alloy

#### Test Specification:

Designed to meet the requirements of Engineering Recommendation C79 and IEC 1238-1.



THORNE &  
**DERRICK**  
INTERNATIONAL

Thorne & Derrick  
+44 (0) 191 410 4292  
[www.powerandcables.com](http://www.powerandcables.com)

1.42b