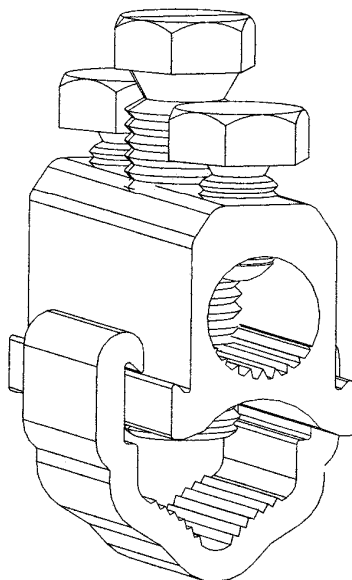


Mains service  
connectors—double  
service

## MECHANICAL CONNECTORS



### UMS95/2S, UMS185/2S & UMS300/2S Connectors



#### Principle Application

For LV mains service jointing of sector/round, stranded/solid, aluminium/copper conductor cores.

#### Range

Connector Ref	Mains (mm <sup>2</sup> )		Service (mm <sup>2</sup> )		Approx Unit Weight (gms)
	Min	Max	Min	Max	
UMS95/2S	25	95	2 x 10*	2 x 70	82
UMS185/2S	50	185	2 x 10*	2 x 70	140
UMS300/2S	95	300	2 x 10*	2 x 70	188

Note: For jointing other core configurations/sizes please contact Sicame Technical Dept

The **Hepworth UMS95/2S** ..... range of mains service connectors accommodates an extensive range of LV mains cable style and sizes.

The connector utilises the proven shear head, direct acting bolts (plated) thereby removing the need for pressure plates.

The plated bolts, combined with a standard plated yoke section, allow for the jointing of mains copper conductor cores without the need for conventional brass gauze.



THORNE &  
**DERRICK**  
INTERNATIONAL

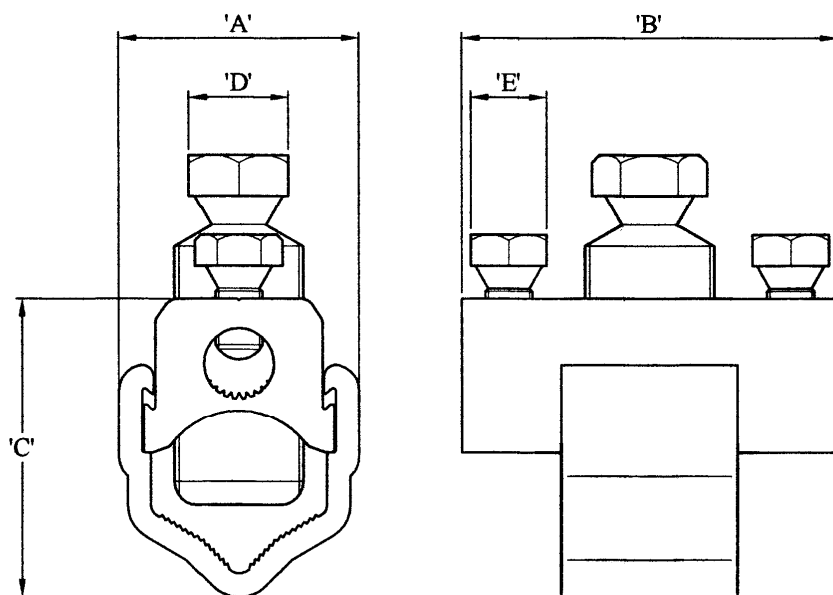
**Thorne & Derrick**  
+44 (0) 191 410 4292  
[www.powerandcables.com](http://www.powerandcables.com)

Mains service  
connectors—double  
service

## MECHANICAL CONNECTORS

### UMS95/2S, UMS185/2S & UMS300/2S Connectors

#### Physical Dimensions



Connector Reference	Dimensions (mm)				
	A	B	C	D	E
UMS95/2S	26.0	58.0	36.5	13 A/F	13 A/F
UMS185/2S	35.0	64.0	44.5	17 A/F	13 A/F
UMS300/2S	41.0	68.0	51.0	17 A/F	13 A/F

#### Material

Aluminium Alloy

Copper Alloy (Service Shear Screw)

#### Test Specification

Designed to meet the requirements of Engineering Recommendation C79 and IEC 1238-1.

Stranded service conductor less than 10mm<sup>2</sup> should be doubled and re-doubled, where necessary, to achieve a satisfactory cross section area.



THORNE &  
**DERRICK**  
INTERNATIONAL

Thorne & Derrick  
+44 (0) 191 410 4292  
www.powerandcables.com