

INSTALLATION INSTRUCTIONS

INSTALLATION
VIDEO AVAILABLE
ON OUR WEBSITE



CSO
SEALING SYSTEMS

NOFIRNO®

Duct Seal

The Rapid Sealing System



THORNE &
DERRICK
INTERNATIONAL

Thorne & Derrick
+44 (0) 191 410 4292
www.powerandcables.com

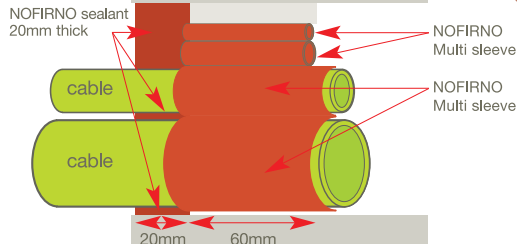
SAFETY.
RELIABILITY.
INGENUITY.

INSTALLATION INSTRUCTIONS

The **NOFIRNO Duct Seal** is manufactured by Beele Engineering. It is used across the UK onshore construction market. The **NOFIRNO Duct Seal** system is a multi-cable and pipe transit sealing system designed specifically for cable ducts and building entries. It provides an effective and simple solution protecting against flood and gas ingress. It consists of only two components: **NOFIRNO** sealant, a high quality silicone based sealant and **NOFIRNO** rubber multi sleeves.

TOOLS REQUIRED: (INSTALLATION KITS AVAILABLE)

- High ratio sealant gun
- Long nosed pliers
- Approved degreasing wipes
- Cellulose sponges
- Wooden depth gauge (marked at 20mm)
- Longer cartridge nozzles & angle connectors
- Disposable nitrile gloves
- Water spray
- Head Torch
- Cartridge cutter



- 20mm layer of NOFIRNO sealant
- 60mm NOFIRNO Multi sleeve
- Water tight pressure resistance tested up to 4 bar
- WIMES, DSEAR, ATEX & APEA compliant



1. Ensure the duct opening is clear, remove any debris which may interfere with the installation of the **NOFIRNO** Duct Seal. Carefully cutting off any cable ties will help separate the cables. The duct should also be dry. For running water applications contact CSD.



2. Using an approved degreasing cleaner thoroughly clean all surfaces where sealant will be applied. All dirt, cement, dust or oil must be removed from the inside edge of the duct or building entry and the outside of any cable or service pipe. Several wipes may be needed. The Nofirno sealant will not bond to any surface that is not clean and dry.



3. To ensure cable separation for installations with smaller cables, use the sleeve cutting tool to slit a quantity of the NOFIRNO sleeves. This should be about equal to the quantity of cables in the duct.

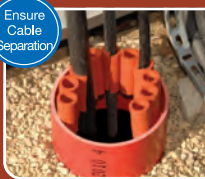


Pack
Tightly

6. Any small gaps should be filled with smaller sized 18/12 NOFIRNO multi sleeves. Multi sleeves can be easily separated in to smaller quantities. It is important to ensure multi sleeves are tightly packed into the duct to create a solid base for the application of the sealant.



9. Adjustments can be made to the multi sleeves using a pair of long nosed pliers. Allowing the correct 20mm depth will ensure a suitable layer of sealant is applied and a good seal is maintained.



Ensure
Cable
Separation

4. Place a split sleeve around each of the cables in the duct and then push the multi sleeves into the duct. For larger or single cables, this is not necessary. Simply ensure the multi sleeves provide separation between cables and between the duct and cables.



7. Push all of the multi sleeves into the duct.



10. Attach the nozzle to the NOFIRNO sealant cartridge and snip the nozzle at an angle, this will help installation. For awkward applications longer nozzles and angled applicators are available. To ensure a good bond is made, before adding the NOFIRNO sealant, clean the duct and cables again using the approved degreaser.



5. Fill the remaining free space with spare NOFIRNO multi sleeves.



8. Push sleeves into duct to depth of 20mm, allowing for the application of the NOFIRNO sealant layer.



Apply
Sufficient
Sealant

11. Using a specialist high ratio caulking gun, apply the NOFIRNO sealant to the least accessible areas first (usually around cables). Apply sealant over sleeves, allowing to fill out to the required 20mm depth; a slight overfill is needed. Use a torch to check for gaps in sealant & apply more sealant if required.

INSTALLATION INSTRUCTIONS



THORNE &
DERRICK
INTERNATIONAL

Thorne & Derrick
+44 (0) 191 410 4292
www.powerandcables.com



12. When working with the NOFIRNO sealant we recommend the use of disposable nitrile gloves. Using the water spray, dampen the cellulose sponge. This is done to stop the sealant from sticking to the sponge whilst working with it.



15. The surface of the NOFIRNO sealant should then be finished off by hand. Ensure a good smooth finish is obtained by the use of a fast skimming motion. Make sure there is a good seal around all of the cables, paying particular attention between the cables.



16. Take a final check with a torch to ensure sufficient sealant has been applied and the duct is properly sealed. If there are any areas that do not seem sufficiently sealed add more NOFIRNO sealant in this area and smooth off as before. Clean any excess sealant from the edge of the duct and cables.



17. The completed **NOFIRNO** Duct Seal will provide a 4 bar (58 psi) water tight and 1.0 bar (15 psi) gas tight rated seal. The RISE RAPID system is proven to provide maintenance free protection for a period in excess of 50 years.



13. Using a dabbing motion, firmly pat down the NOFIRNO sealant, ensuring the sealant makes good contact with both cable and the duct wall. For installations in vertical ducts the sealant should stand just proud of the duct; allowing any water to run off the surface without pooling.



14. Use the water spray to wet your gloves, this will ensure the sealant does not stick to the gloves.

4 POINT FINAL CHECK

- ✓ Is there sufficient sealant applied?
- ✓ Are there any gaps in sealant layer?
- ✓ Is the sealant in good contact with the duct or conduit?
- ✓ Is the sealant in good contact with the cables or any service pipe?

Standard kits available to suit the following duct sizes

1 Kit = 100mm Duct
2 Kits = 150mm Duct
50mm 200mm
125mm 225mm
150mm 250mm
160mm 300mm

NOFIRNO can be used to suit any sized opening. If the above standard selection does not suit your requirements please contact us.

Installation instruction video
also available on our website
www.csdsealingsystems.co.uk