

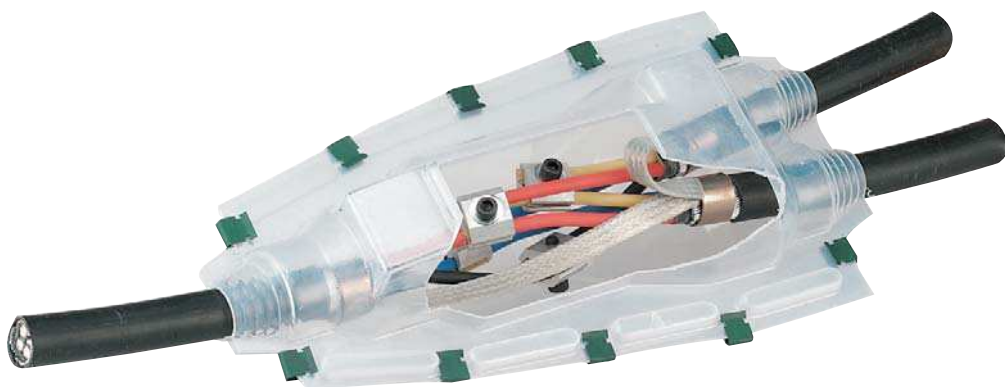
THORNE &  
**DERRICK**  
INTERNATIONAL

Thorne & Derrick  
+44 (0) 191 410 4292  
[www.powerandcables.com](http://www.powerandcables.com)

# JBRCC

## Low Voltage Universal Cable Joint Kits

(Mechanical Connectors Included)



## BICAST JEM

### Application

Branch joints for LV cables with copper & aluminium conductors from 1.5mm<sup>2</sup> to 300mm<sup>2</sup>

### Features

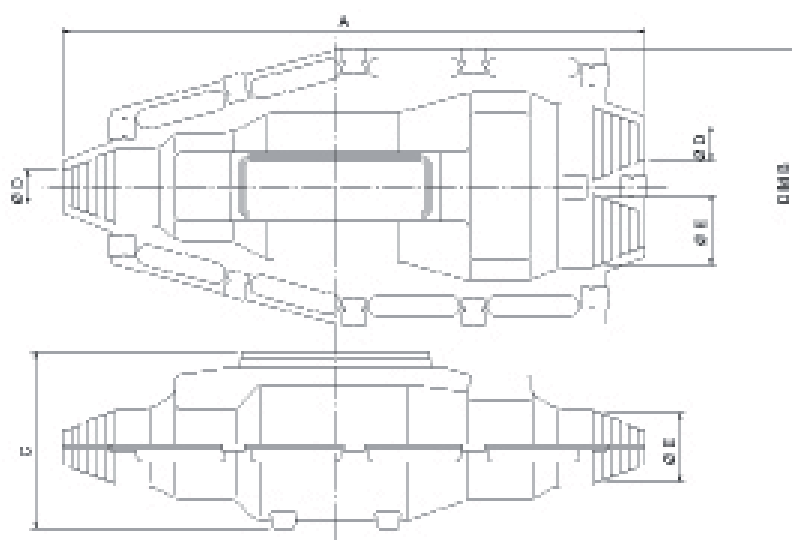
- Low Hazard Isocynate free JEM resin
  - Twin Pack mixing in clear laminate sachets
  - Extremely low viscosity combined with enhanced adhesion
- Transparent vacuum formed shells which offer greater working dimensions & interlocking flange seals.
- Mechanical connectors that need no special tools whilst allowing good conductor range take.



# JBRCC Low Voltage Universal Cable Joints

## Technical Data

- > Low Voltage Branch Joints for 600/1000 Volt SWA cables to BS5467, BS6346 and IEC 502 - with Polymeric Insulation, aluminium or copper conductors.
- > Tested and approved to BS EN 50393 & ENA ER C81
- > Includes Mechanical connectors (4 cores) requiring no special tooling and constant force spring Armour Bonds.
- > JEM Resin
  - Easier mixing in "Twin Pack" totally enclosed mixing in a clear laminate sachet.
  - Extremely low mix viscosity allows void free joint filling.
  - JEM Resin is insensitive to moisture and will cure under water.
  - Enhanced adhesion to XLPE, MDPE, PVC & lead.
  - High flash point, non-flammable liquid - No special storage or transport requirements.
  - Not classified as irritating to the skin or eyes.
  - Does not cause skin sensitization.



Shell Dimensions

Joint Ref.	Dimensions (mm)				
	A	B	C	Min. Box entry Ø 'D'	Max. Box entry Ø 'E'
JBR6CC	240	125	75	12	22
JBR16CC	345	160	95	20	35
JBR35CC	435	175	100	24	40
JBR95CC	650	210	190	27	51
JBR185CC	870	250	230	40	65
JBR300CC	1020	300	310	55	80

## Joint selection for 2, 3 and 4 core cables

Nominal Area of Conductor	Two Core Ref.	Three Core Ref.	Four Core Ref.
1.5mm <sup>2</sup>	JBR6CC	JBR6CC	JBR6CC
2.5mm <sup>2</sup>	JBR6CC	JBR6CC	JBR6CC
4mm <sup>2</sup>	JBR6CC	JBR6CC	JBR6CC
6mm <sup>2</sup>	JBR6CC	JBR6CC	JBR6CC
10mm <sup>2</sup>	JBR6CC	JBR16CC	JBR16CC
16mm <sup>2</sup>	JBR16CC	JBR16CC	JBR16CC
25mm <sup>2</sup>	JBR16CC	JBR16CC	JBR35CC
35mm <sup>2</sup>	JBR35CC	JBR35CC	JBR35CC

Nominal Area of Conductor	Two Core Ref.	Three Core Ref.	Four Core Ref.
50mm <sup>2</sup>	JBR95CC	JBR95CC	JBR95CC
70mm <sup>2</sup>	JBR95CC	JBR95CC	JBR95CC
95mm <sup>2</sup>	JBR95CC	JBR95CC	JBR95CC
120mm <sup>2</sup>	JBR185CC	JBR185CC	JBR185CC
150mm <sup>2</sup>	JBR185CC	JBR185CC	JBR185CC
185mm <sup>2</sup>	JBR185CC	JBR185CC	JBR185CC
240mm <sup>2</sup>	JBR300CC	JBR300CC	JBR300CC
300mm <sup>2</sup>	JBR300CC	JBR300CC	JBR300CC

