



THORNE &
DERRICK
INTERNATIONAL

Thorne & Derrick

+44 (0) 191 410 4292

www.powerandcables.com



OJC

Offshore Junction Chamber

**Up to 42 kV
630 A**

PART OF OUR
WINDLINK®
PRODUCT RANGE

Application

For offshore wind power parks, the off shore junction chamber will be used as a connecting point for internal tower cable to external subsea arrays cables.

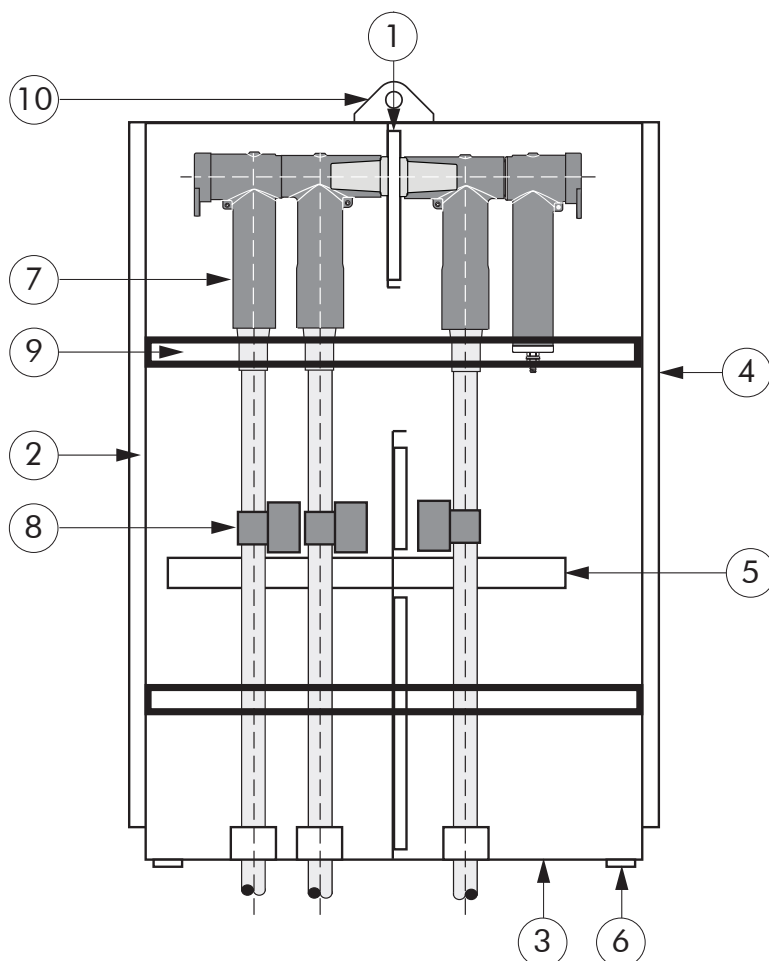
Technical characteristics

- Sheet materials: marine grade 316L stainless steel and A2/A4 grade fittings.
- Robust design with IP66 degree of protection (BS EN 60529:1992).
- Short circuit tested acc. to DIN VDE 0278-626-1 (HD 629.1 S2:2006 + A1:2008): 2009-07: Thermal short-circuit 25kA/1s, Dynamic short-circuit 62.5 kA.

Design

Offshore junction chamber comprising:

1. Aluminium bushing support plate for feed through bushings.
2. Access panel for 2 x array cable connection.
3. Split gland plate incorporating 9 feed through sealed glands.
4. Access panel for turbine connection.
5. Earth bar on insulated standoffs.
6. Chamber secured by 4 x M12 internal base fixings. Bolts not supplied.
7. Different connector and surge arrester combinations are possible.
8. Cable cleats arrangement for 9 single core cables.
9. Channels for mounting external accessories.
10. Lifting eyes



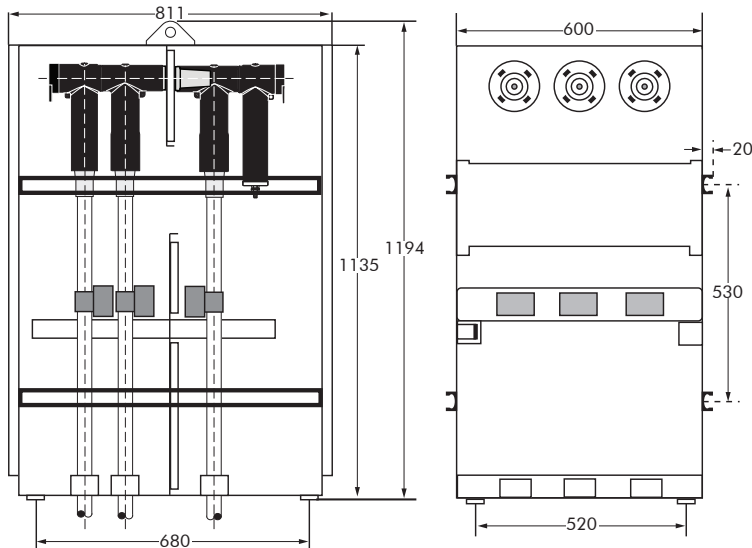
Offshore Junction chamber type	Voltage Um (kV)	Outer dimensions of chamber (w x d x h)(mm)	Fixing points	Conductor sizes (mm ²)*	
				min	max
OJC1	42	600 x 800 x 1125	4 x M16	50	630

* to be verified according to cable cleat specification

Benefits

- The chamber design is specifically suitable to be installed in the transition piece of the tower.
- High accessibility for ease of installation.
- Ideal test and demarcation point.
- Possible use of pre-terminated and tested jumpers to tower equipment.
- Time saving.
- Reducing cost of installation.

Dimensions



in mm.

Separable connectors



Extension to larger cable sizes and additional array cables possible. Please contact our representative for more details.



Junction chamber can be equipped with different connector combinations. See possible arrangements and catalogue pages for more details.



Spare room at turbine connection to add surge arresters to protect tower equipment from high voltage surges. See catalogue pages for more details.



Preterminated and tested jumpers to connect junction chambre with tower equipment.

Chamber options



Earthing kit to facilitate earthing of the chamber while array out of service. Please contact our representative for more details.



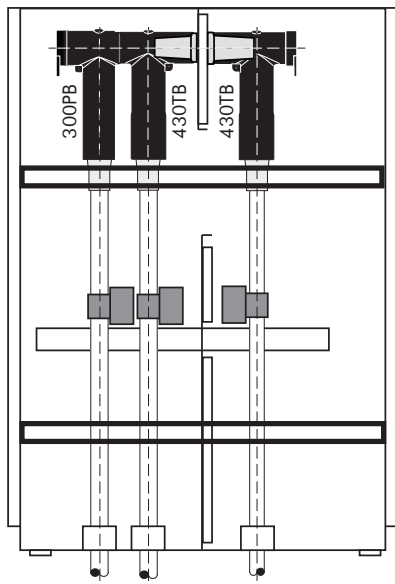
Mechanical key interlock to add additional security level against accidental opening. Please contact our representative for more details.



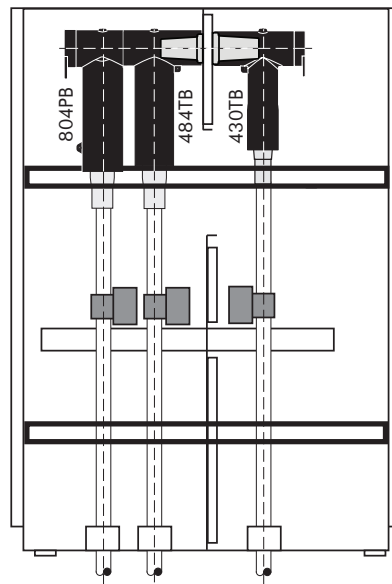
Current transformer package. Please contact our representative for more details.

POSSIBLE ARRANGEMENTS

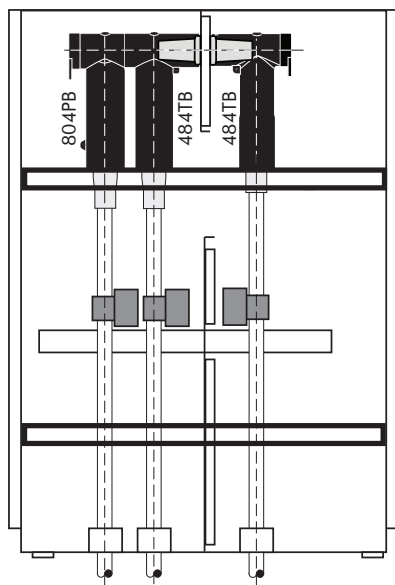
| 430TB+300PB+430TB



| 484TB+804PB+430TB



| 484TB+804PB+484TB



**| Combined with surge
arrester: 300SA or 800SA**

