



RAILduct™ Metre

Length

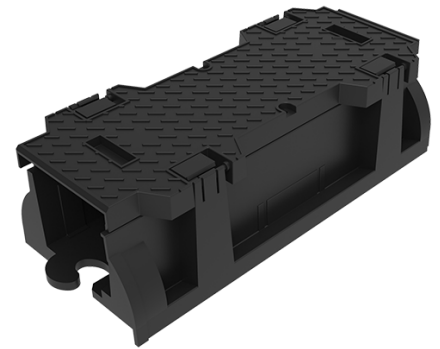


Product Description

RAILduct™ is the modern, lightweight alternative to concrete cable troughing which offers significant advantages in health and safety, speed of installation and flexibility.

Product Details

Connection Length:	1000mm	Internal Width:	236mm
External Length:	1020mm	Internal Depth:	200mm
External Width:	455mm	Weight:	9.3kg
External Depth:	300mm	Product Code:	SYDR00-00000000-BK00LA001



Material Properties

Material Profile	High Density Polyethylene (HDPE)	Black
Tensile Strength	ISO 527	22-26 MPA
Flexural Modulus	ISO 178	800 to 1100 N/mm ²
Notched Izod Impact Strength	ISO 180 - 1A	4 - 6KJ/m ³
Density	ISO 1183-1	0.955 - 0.958 g/cm ³
Service Temperature	-	-40 to +80 °C
Surface Resistivity	ASTM D257-14	> 5.24E+15 ohm/square
Volume Resistivity	ASTM D257-14	> 2.276.39E+15 ohm/cm
Fire Performance	UL94	HB
Water Absorption (Non polar polymer)	-	0.01%

Installation

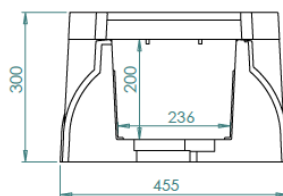
RAILduct™ has been installed in many rail applications throughout the world and in different extremes of temperatures.

Key Features

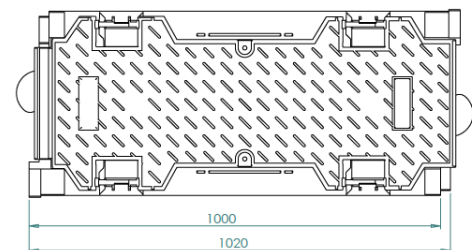
- Light weight
- Strong
- Flexible



Scan for access to
technical documents library



Metre cross-section detail



Metre cross-section top view

RD-1000 V.01 16/01/2019

