

STAKKAbox™ Fortress

Access Chamber Section

915mm x 445mm



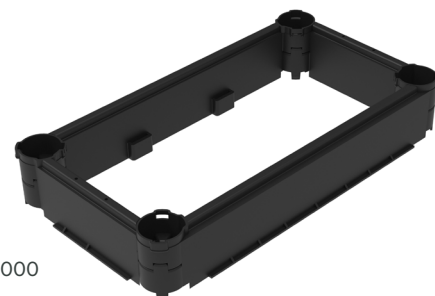
Product Description

STAKKAbox™ Fortress is a range of modular access chambers, made from 150mm deep riser sections which stack and interlock to offer flexibility in finished chamber depths.

Product Details

Clear Opening: 915mm x 445mm
 External Dimensions: 1027mm x 575mm
 Stacking Depth: 150mm
 Actual Depth: 170mm

Weight: 8.1kg
 Product Code: SYFF94-09150445-BK010C000
 Delivery Options: Assembled Ring



Materials Properties

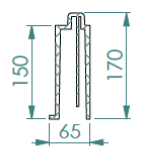
Material Profile	High Density Polyethylene (HDPE)	Black
Tensile Strength	ISO 527	22-26 MPA
Flexural Modulus	ISO 178	800 to 1100 N/mm ²
Notched Izod Impact Strength	ISO 180 - 1A	4 - 6 KJ/m ³
Density	ISO 1183-1	0.955 - 0.958 g/cm ³
Service Temperature	-	-40 to +80 °C
Surface Resistivity	ASTM D257-14	> 5.24E+15 ohm/square
Volume Resistivity	ASTM D257-14	> 2.276.39E+15 ohm/cm
Fire Performance	UL94	HB
Water Absorption (Non polar polymer)	-	0.01%

Installation

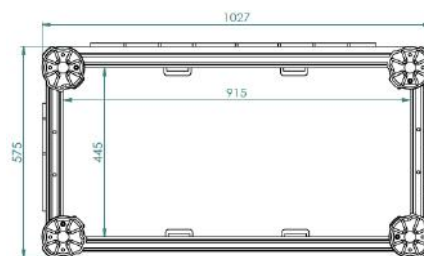
STAKKAbox™ Fortress has been tested to withstand vertical loads of EN124 D400. Please refer to the STAKKAbox™ Installation Guide for installation details.

Key Features

- Fast and easy to install
- Sectional & twin wall design
- Smooth outer walls with lip to 'key' in



Fortress Cross
Section Detail



Fortress cross-section top view



Scan for access to
technical documents library

Fortress cross-section detail

CPFF-09150445 V.02 27/02/2020