

RapidSTACK™

RapidSTACK™

Access Chamber Section

1220mm x 1000mm



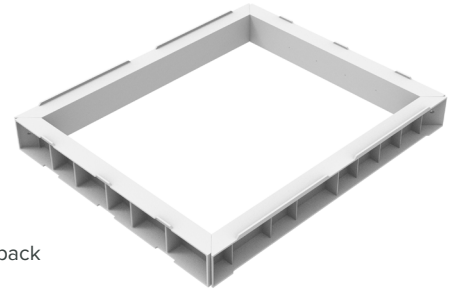
Product Description

RapidSTACK™ offers a modular, scalable solution made from 150mm deep riser sections which stack to offer flexibility in finished chamber depths.

Product Details

Clear Opening: 1220mm x 1000mm
External Dimensions: 1384mm x 1168mm
Stacking Depth: 150mm
Actual Depth: 162mm

Weight: 24.3kg
Product Code: CPRDRS-12201000
Delivery Options: Assembled Ring or Flatpack



Materials Properties

Material Profile	Glass Reinforced Polyester (GRP)	Grey
Tensile Strength	ISO 527-4	40MPa
Flexural Strength	ISO 14125	70MPa
Impact Strength	ISO 14125	20KJ/m ²
Heat Distortion Temperature Range	ISO 75-2	>200°C
Density	ISO 1183	2 g/cm ³
Water Absorption	ISO 62	<0.5
Fire Performance	UL 94	HB

Installation

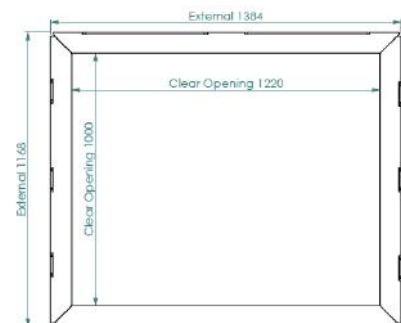
RapidSTACK™ has been tested to withstand vertical loads of EN124 D400. Please refer to the STAKKAbOX™ Installation Guide for installation details.

Key Features

- Fast and easy to install
- Variability in size
- Flat pack option



RapidSTACK™ cross-section detail



RapidSTACK™ cross-section top view



Scan for access to technical documents library

CPRDRS-1220x1000 V.01 12/08/2020