

RapidSTACK™

RapidSTACK™

Access Chamber Section

600mm x 600mm



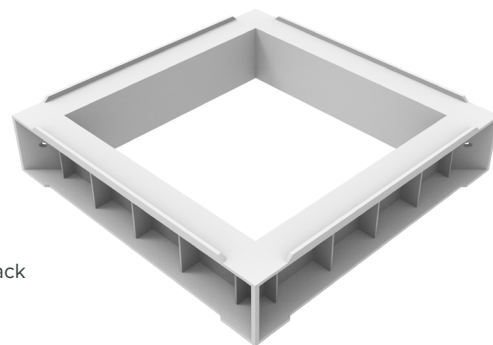
Product Description

RapidSTACK™ offers a modular, scalable solution made from 150mm deep riser sections which stack to offer flexibility in finished chamber depths.

Product Details

Clear Opening: 600mm x 600mm
External Dimensions: 764mm x 764mm
Stacking Depth: 150mm
Actual Depth: 162mm

Weight: 13.6kg
Product Code: CPRDRS-06000600
Delivery Options: Assembled Ring or Flatpack



Materials Properties

Material Profile	Glass Reinforced Polyester (GRP)	Grey
Tensile Strength	ISO 527-4	40MPa
Flexural Strength	ISO 14125	70MPa
Impact Strength	ISO 14125	20KJ/m²
Heat Distortion Temperature Range	ISO 75-2	>200°C
Density	ISO 1183	2 g/cm³
Water Absorption	ISO 62	<0.5
Fire Performance	UL 94	HB

Installation

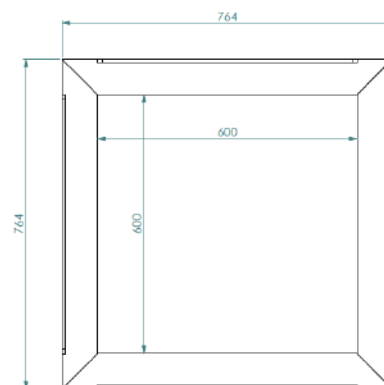
RapidSTACK™ has been tested to withstand vertical loads of EN124 D400. Please refer to the STAKKAbOX™ Installation Guide for installation details.

Key Features

- Fast and easy to install
- Variability in size
- Flat pack option



RapidSTACK™ cross-section detail



RapidSTACK™ cross-section top view



Scan for access to
technical documents library

CPRDRS-600X600 V.01 01/08/2019



**THORNE &
DERRICK
INTERNATIONAL**

Thorne & Derrick
+44 (0) 191 410 4292
www.powerandcables.com