

STAKKAbox™ ULTIMA

Access Chamber Section

1200mm x 600mm



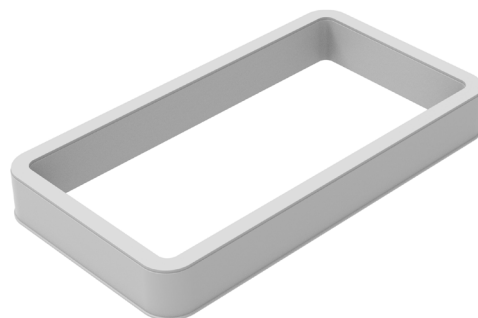
Product Description

STAKKAbox™ ULTIMA offers a flexible access chamber system with no compromise on strength. Due to the design and the material used (GRP), ULTIMA should be used anywhere where sidewall loading is a concern, such as alongside highways or railway tracks.

Product Details

Clear Opening: 1200mm x 600mm
 External Dimensions: 1327mm x 727mm
 Stacking Depth: 150mm
 Actual Depth: 160mm

Weight: 19.3kg
 Product Code: CPULRS-12000600
 Delivery Options: Solid Ring



Materials Properties

Material Profile	Glass Reinforced Polyester (GRP)	Grey
Tensile Strength	ISO 527-4	62 MPa
Flexural Strength	ISO 14125	142 MPa
Flexural Modulus	ISO 14125	9.6 GPa
Impact Strength	ISO 179	50 kJ/m ²
Heat Distortion Temperature Range	ISO 75-2	>200 °C
Density	ISO 1183	1.7 g/cm ³
Water Absorption	ISO 62	≤0.5%
Volume Resistivity	IEC 60093	1.00E12 ohm.cm
Fire Performance	UL 94	HB to V0
Limited Oxygen Index	ISO 4589-2	27%

Installation

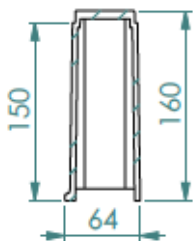
STAKKAbox™ ULTIMA has been tested to withstand vertical loads of EN124 E600. Please refer to the STAKKAbox™ Installation Guide for installation details.

Key Features

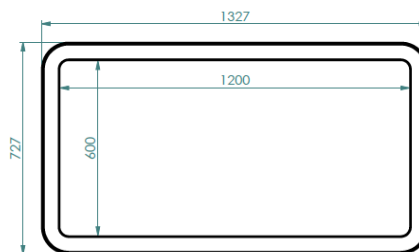
- Fast and easy to install
- Sectional & twin wall design
- Smooth outer walls with lip to 'key' in



Scan for access to technical documents library



ULTIMA cross-section detail



ULTIMA cross-section top view

CPUL-12000600 V.01 11/12/2018



**THORNE &
DERRICK**
INTERNATIONAL

Thorne & Derrick
+44 (0) 191 410 4292
www.powerandcables.com