



Cembre

PORTABLE BATTERY HYDRAULIC CUTTING UNITS **RADIO CONTROLLED**

B68RC3-85
B68RC3-96
B68RC3-120



Certified Quality
Management System



Certified Environmental
Management System



Certified Occupational
Health & Safety
Management System



DESIGNED FOR REMOTE CUTTING OPERATIONS IN MAN-HOLES

REMOTE OPERATION FOR SMARTER AND SAFER WORKING



THORNE &
DERRICK
INTERNATIONAL

Thorne & Derrick
+44 (0) 191 410 4292
www.powerandcables.com

B68M-P18-KV-RC3

CEMBRE PROTECTUS, THE NAME FOR SAFETY



The heart of each unit is the new portable pump **B68M-P18-KV-RC3**, battery operated for independent use.

Having the inherent strengths of the Cembre 18V tool range, the **B68M-P18-KV-RC3** is a lightweight high capacity pump equipped with an innovative radio remote control designed specifically for man-hole environments to allow operators to control and operate the pump out of the man-hole at a safe distance.

New Li-Ion 18V 7Ah batteries provide high capacity while improved operating speed results from a revitalized hydraulic system with double speed action.

A maximum pressure sensor assures greater precision and repeatability of the pressure cycle, while a security valve doubles the provision for operator safety.

The unit is fitted with a patented unique system for stopping the pump when the cutting head sensor

signals that its blades have travelled fully.

At this point the LED indicator and buzzer notify the operator of the successful completion of the cutting operation. For this reason, each pump is paired to its specific cutting head only and it must be considered as a complete unit.

The unit has a manual pressure release button in case of emergency. Easy access to the oil reservoir is by means of an oil top-up inlet. The innovative remote control function is able to work in man-hole environment where radio communication is normally more complicated. The unit features an OLED display to provide essential real time tool operation

ing information including:

- Operating mode selection (cutting or crimping)
 - Release mode selection (Smart release, manual release)
 - Minimum set pressure and momentary pressure reached in bar/psi to allow verification of correct operation
 - Battery charge level
 - No. of cycles performed
 - No. of cycles before scheduled recommended maintenance
 - Motor temperature
 - Operating command (radio or manual).
- The unit has a secondary operating trigger which can be selected through the OLED display in case of need.



NEW PORTABLE BATTERY HYDRAULIC PUMP RADIO CONTROLLED

Operating features:

- 20 meters radio control operating range
- Intelligent auto-return at the end of the cycle (Smart Release)
- OLED multifunctional display with touch button
- Electronic Pressure Sensor (EPS)
- SMARTOOL technology for viewing and downloading operational data
- Wireless blade sensor (no batteries)
- Double acting with radio control or manual intervention
- Pressure release button
- Audible and visual indication of operational progress, completion and alarms
- Anatomical shaping for more convenient and practical handling
- Li-Ion 18.0 V-7Ah rechargeable high capacity battery
- Automatic battery connection system with release button



Data recording and intelligent control allow complete verification of operational parameters



LED indicators and buzzer



OLED multifunctional display



Automatic battery connection system



Pressure release button



New Hydraulic Cutting Units Radio Controlled **B68RC3 Series**



B68RC3-85



B68RC3-96



B68RC3-120

Hydraulic Cutting Units B68RC3

Hydraulic cutting units type **B68RC3** are fitted with a unique wireless sensor paired to the receiver integrated in the pump using European frequencies (868 MHz).

The sensor is maintenance-free as it is fully protected and has battery-free technology.

All RC heads are fitted with an eyelets to hang the head for better support during operation.

A grounding point is provided to facilitate the grounding of the head when required.

HYDRAULIC CRIMPING HEAD 130 kN

RHC131LN-KV



Hydraulic head featuring a large (42 mm) jaw opening; complete with quick automatic coupler for connection to a hydraulic pump with a working pressure of 700 bar. Is suitable for a wide range of connectors up to 400 sqmm using die sets common to the Cembre 130 kN tooling range.

Innovation first and foremost, it's in our DNA.



Radio Remote Control

The B68M-P18-KV-RC3 pump introduces radio control to utility cable cutting operations in limited access locations, eg. in man-holes, to enable working from a safe distance.



Electronic Cut Sensor

The ECS guarantees the precision of the cutting operation, checking the actual value of pressure and informing the operator about possible errors.

The operator is in full control of the pump at all times as the B68M-P18-KV-RC3 communicates the progress of the cutting operation by audible and visual indicators. All at a safe distance.

The pump is equipped with intelligent auto-return at the end of each cutting operation. Its Li-Ion 18 V-7Ah high capacity batteries provide extended autonomous capability.



Safe Cut Technology

Fitted with LED indicators and a buzzer to communicate during progress and at the completion of the cutting operation.



Examples of use of the units

Fitted by dielectric oil for operator protection in case of cutting cables that may be accidentally live. Each radio remote control is paired to only its specific pump. Designed with improved handling characteristics for convenience and managability, **B68M-P18-KV-RC3** has a fibreglass-plastic shell with high resistance to wear and damage.

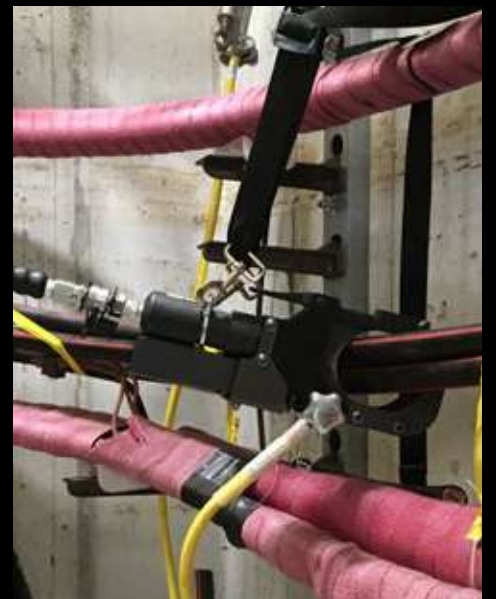
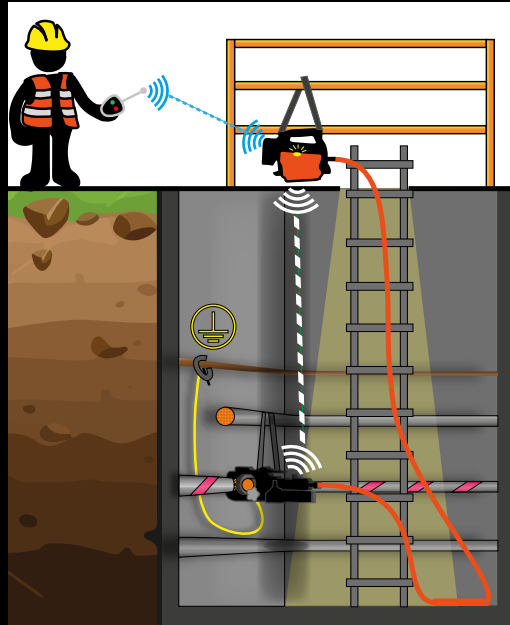
**SMART
TECHNOLOGY
RELEASE**

Selecting the SMART RELEASE mode on the OLED display allows the operating pressure to be maintained until the operating button is released, thus allowing blades to open automatically at the end of the cutting cycle.

When used in crimping mode this feature allows the operator to make a visual check of the crimped connection.

SMARTOOL technology enables the user to store data from up to 200,000 cycles on the integrated memory card for transfer to a computer via a USB cable.

The pump is also recommended for use with Cembre KV type protected crimping heads.



General features:



Type	Operating pressure bar	Radio remote control		Dimensions Pump mm			Weight Pump kg (with Battery)	Dimensions Heads mm			Weight Head kg	Battery Li-Ion	STORAGE			
		frequency GHz	operating range meters	length	height	width		length	height	width			Type	Dimensions mm	Weight kg	Supplied with the unit
B68RC3-85								409	174	140	6,2					
B68RC3-96	729	2,4	20	417	236	212	6,2	498	249	147	9,7	18 V - 7.0 Ah	VAL-B68RC3	665 x 422 x h260	17,4	✓
B68RC3-120								536	223	140	10,9					

Supplied with:

- Radio remote control (2405 ÷ 2480 MHz)
- **CB 1870L**, Li-Ion 18.0V 7.0 A h Battery (2 pcs)
- **ASC 30-36 EU 27044000**, Battery charger (INPUT 220-240 V / 50-60 Hz; OUTPUT 12-42 V DC / 3.0 A MAX.)
- USB cable
- Shoulder strap
- **VAL-B68RC3** Metal Carrying Case



ACCESSORIES AVAILABLE

- **CVB-031** Canvas bag
- **EK100** Earth cable for the pump (1 m length)
- **EK500P** Earth cable for the head (5 m length) with earth rod and canvas bag

CVB-031



EK100



EK500P



18V
7.0 Ah

LiHD
TECHNOLOGY

New

CB 1870L 18V - 7.0 Ah Li-Ion High Capacity Battery:

- Equipped with LED indicators to show the remaining battery life at any time by pressing the adjacent button
- Provides 100 % of its energy between -15 and +50°C
- Electronic control of the individual cells to avoid under or overcharging
- AIR COOLED ventilated charging technology for a longer life and shorter recharge time
- Quick charging time (45 min) using the ASC ULTRA charger
- Timed auto off switch to optimise energy consumption



Cembre
www.cembre.com



Cembre S.p.A.
Telefono: +39 030 36921
Telefax: +39 030 3365766
www.cembre.it
E-mail: sales@cembre.com



Cembre Ltd.
Tel.: +44 01675 470440
Fax: +44 01675 470220
www.cembre.co.uk
E-mail: sales@cembre.co.uk



Cembre S.a.r.l.
Tél.: +33 01 60 49 11 90
Fax: +33 01 60 49 29 10
www.cembre.fr
E-mail: info@cembre.fr



Cembre España S.L.U.
Teléfono: +34 91 4852580
Telefax: +34 91 4852581
www.cembre.es
E-mail: comercial@cembre.es



Cembre GmbH
Telefon: +49 089 3580676
Telefax: +49 089 3580677
www.cembre.de
E-mail: sales@cembre.de



Cembre Inc.
Tel.: +1 732 225-7415
Fax: +1 732 225-7414
www.cembreinc.com
E-mail: Sales.US@cembreinc.com



IKUMA GmbH & Co. KG
Telefon: +49 7151 20536 - 60
Telefax: +49 7151 20536 - 80
E-mail: info@ikuma.de
www.ikuma.de



1 8 V 1 5 4 E

Any other country, please contact Cembre S.p.A. - Italy



8 016692 879864