



SIMPLE AND SAFE CRIMPING USING INNOVATIVE TECHNOLOGY

EK WF 120 ML – Optimum results thanks to square crimping



THORNE &
DERRICK
INTERNATIONAL

Thorne & Derrick
+44 (0) 191 410 4292
www.powerandcables.com

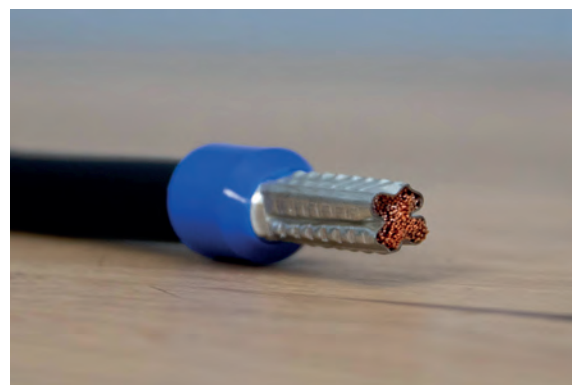
OPTIMUM RESULTS, WORKING IN SEQUENCE

EK WF 120 ML – During crimping, high quality results are the be-all and end-all. We offer optimum solutions across the whole range of cables, combined with excellent ergonomics and simplified work sequences.



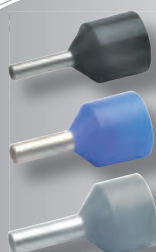
HIGH QUALITY, WITH EASY MANUAL PROCESSING THANKS TO INNOVATIVE SQUARE CRIMPING

The newly developed battery powered hydraulic crimping tool EK WF 120 ML, will simplify your work and simultaneously ensure optimum crimping quality. Using a square-cam mechanism, the EK WF 120 ML crimps both DIN-compliant wire ferrules as well as insulated wire ferrules, twin wire ferrules and insulated wire ferrules for short-circuit protected lines. Here, the use of interchangeable crimping dies is completely unnecessary because the square mechanism adjusts flexibly to the respective cable end sleeve shape.



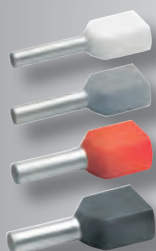


DIN-compliant insulated wire ferrules with Easy Entry

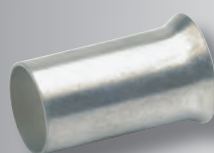


Insulated wire ferrules, for short-circuit protected lines.

6 - 120 mm²



Insulated twin wire ferrules



DIN-compliant wire ferrules, Cu

Precision-fit crimping using comb-shaped molds ensures optimized distribution of forces and embeds the conductor in a corrugated shape. The result is that you get perfect working results over the entire range of wire ferrules shapes. All cross-sections from 6 to 120 mm² can be crimped using the EK WF 120 ML.

Up to a wire ferrule length of 32 mm, only one crimping action is necessary, which means that you can crimp most wire ferrules in the cross-section range in just a single step.



SYSTEMATICALLY OPTIMIZED: FOR EVEN BETTER RESULTS

We have developed an optimum solution for overcoming the challenge of crimping the entire range of cables encountered in control cabinet construction and mechanical engineering, while ensuring the same uniform quality based on our new square crimping process. At the same time, this innovation is a key simplification, because it results in just one system and one geometry.

In particular, the flexible type of crimping using the comb-shaped die ensures optimum results even with old cables. This provides you with a uniform solution for a wide range of conductors.

The new EK WF 120 ML is a perfect addition to the ML range from Klauke.



EKWF120ML



EK30IDML



EK50ML



ES32ML



EK354ML

KLAUKE EK WF 120 ML

BATTERY POWERED HYDRAULIC CRIMPING TOOL
FOR CABLE END SLEEVES 6 - 120 MM²

Specifications

Crimping range	6 - 120 mm ²
Stroke / opening width	19 mm
Crimping Force	10 / 40 kN
Crimping time	1 to 5 s (dependent on the crimping cross-section)
Swiveling crimping head	350°
Battery charging time	40 Min.
Weight including battery	1.96 Kg
Ambient temp.	-10 to +40 °C
lights	LED

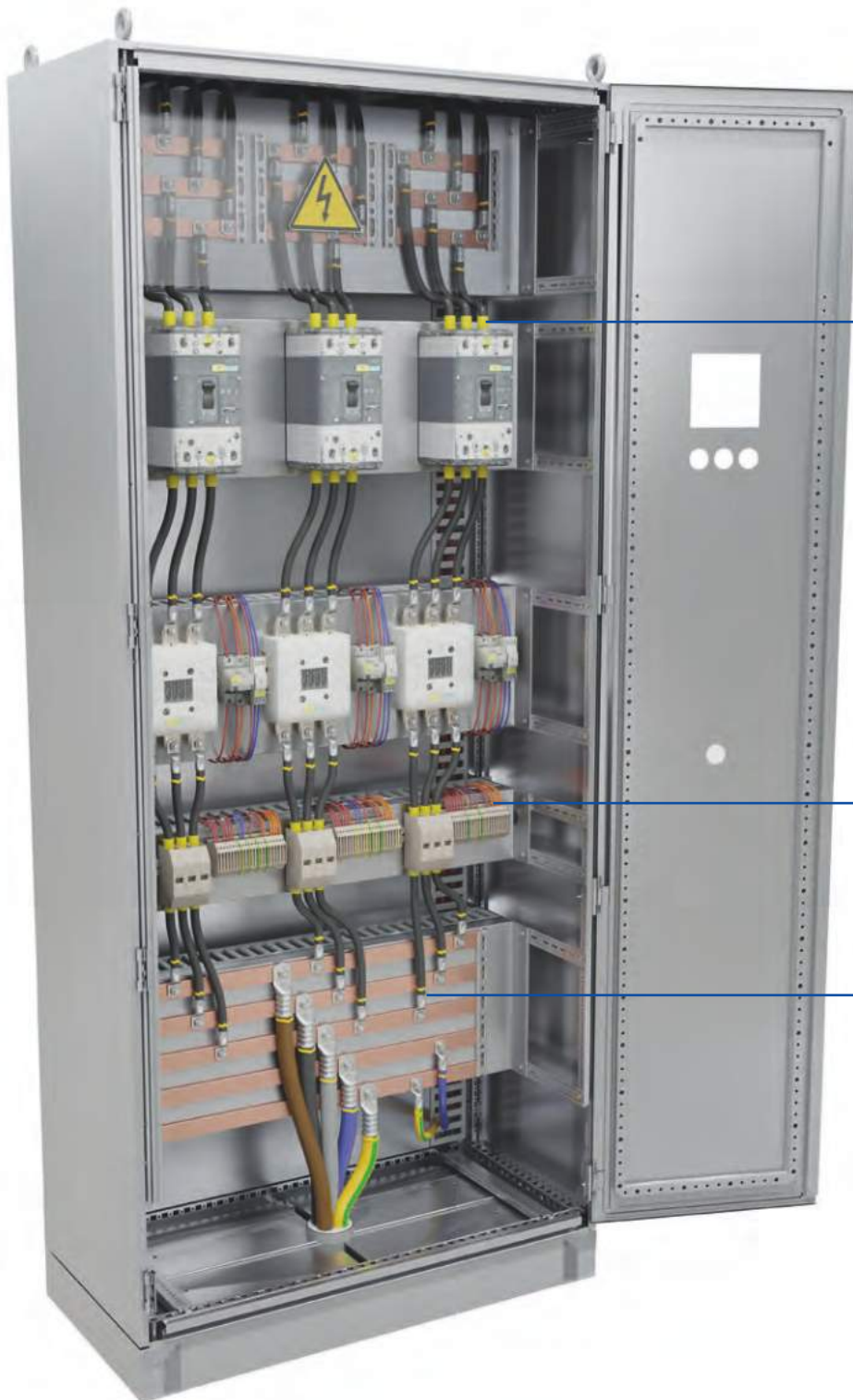
Article	Art. no.
Battery-powered hydraulic crimping tool 6 - 120 mm ²	EKWF120ML



Scope of supply

Rechargeable battery 10.8 V / 1.5 Ah, Li-ion (16.2 Wh)	RAML1
Charger for 10.8 V Li-ion rechargeable batteries, 230 V	LGML1
Plastic case	KKML

KLAUKE OFFERS A TOOL PACKAGE



Control cabinet construction normally involves the use of different cables, terminals and cable end sleeves. The three tools EK WF 120 ML, EK 30 ID ML and EK 50 ML from Klauke provide cablers/wirers with access to a package of solutions for the entire application range of cable types and cross-sections.

Until now, efficiencies in control cabinet construction have been limited because the crimping of different cables has frequently called for the changing over of the required crimping dies, which costs time and money. Now, with the EK 30 ID ML and the EK WF 120 ML, Klauke is offering solutions that function without any changing over of crimping dies.

FOR QUICK AND SAFE CRIMPING.

EFFICIENT WIRING WITH INNOVATIVE TECHNOLOGY



Battery powered hydraulic crimping tool for cable end sleeves 6 - 120 mm² – EK WF 120 ML

- Innovative square crimping - the use of crimping dies is not necessary
- Powerful 10.8 V Li-ion battery technology with charging level indicator
- Closed head, swiveling
- Simple and safe: one-button operating concept for controlling all tool functions



Micro I Electromechanical crimping tool 0.14 - 50 mm² – EK 50 ML

- The Klauke micro with its intuitive PowerSense function combines the advantages of manual press tools with the convenience of battery-powered hydraulic press tools
- Excellent crimping results with minimum energy use
- One-button operating concept for controlling all tool functions
- Electronic control with locking function monitors full closing of the crimping dies
- Automatic return after completed work step



Battery powered hydraulic crimping tool 6 - 120 mm² – EK 30 ID ML

- Indent crimping - changing of crimping dies is not necessary
- Powerful 10.8 V Li-ion battery technology with charging level indicator
- Closed head, hinged, swiveling
- Simple and safe: one-button operating concept for controlling all tool functions

CONNECTING TOGETHER

RIDGID

 GREENLEE

Klauke

Get the latest information on products, services and promotions
by signing up to our newsletter:

[KLAUKE.COM/NEWSLETTER](https://klauke.com/newsletter)



Follow us!



© 2021 Gustav Klauke GmbH. All rights reserved. The Klauke logo and the Emerson logo are registered trademarks of Emerson Electric Co. and its subsidiaries in the USA and in other countries. All other logos are the property of their respective owners. Subject to change. BREKWF120ML21GB 2.000 09/21 I

Klauke

 THORNE &
DERRICK
INTERNATIONAL

Thorne & Derrick
+44 (0) 191 410 4292
www.powerandcables.com

 EMERSON