



THORNE &  
**DERRICK**  
INTERNATIONAL

Thorne & Derrick  
+44 (0) 191 410 4292  
[www.powerandcables.com](http://www.powerandcables.com)



# Cable Bridge

Data Sheet v1.1



CableSafe® / Westmark B.V.  
Arnhemseweg 87, 3832 GK Leusden





# CABLE SAFETY

## Cable Bridge

### Description

The Cable Bridge is designed to safely suspend cables and hoses over walkways and roads. The Cable Bridge removes tripping obstacles and provides a safe overpass for cables and hoses. The Cable Bridge improves clean work environment and safe working conditions when cables and hoses are frequently used.

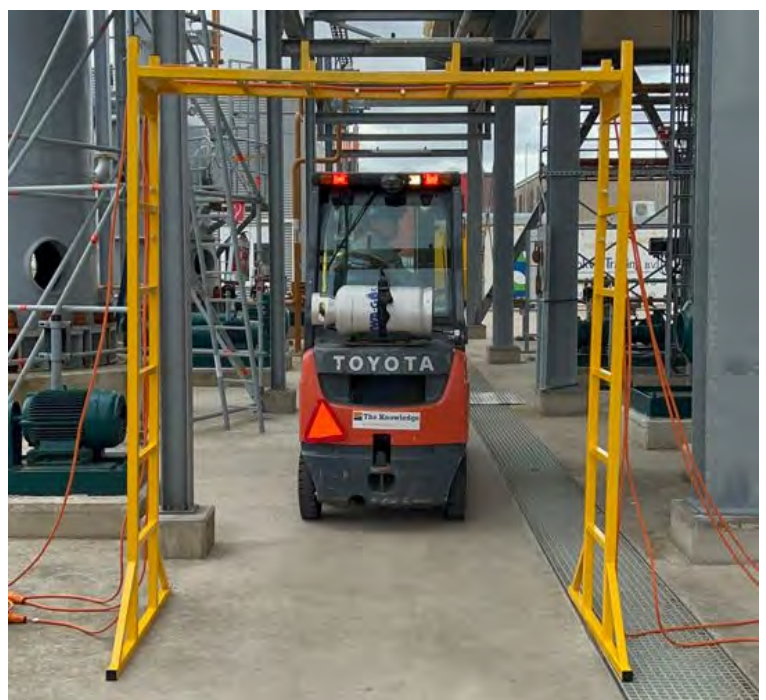


### Material

The Cable Bridge is made of steel and is coated with the safety color yellow. When the Cable Bridge is designed for outdoor use, it is recommended to be coated and galvanized. The edges of the Cable Bridge are rounded to protect your cables and hoses. The unit is tested with a load of 1.000 kg [2.200 lbs]. The Cable Bridge unit is rated to hold up to 500 kg [1.100 lbs] cable weight.

The Cable Bridge is constructed with horizontal side beams which can be used as temporary storage for cables and hoses that are frequently in use. CableSafe Safety Hooks are supplied on request.

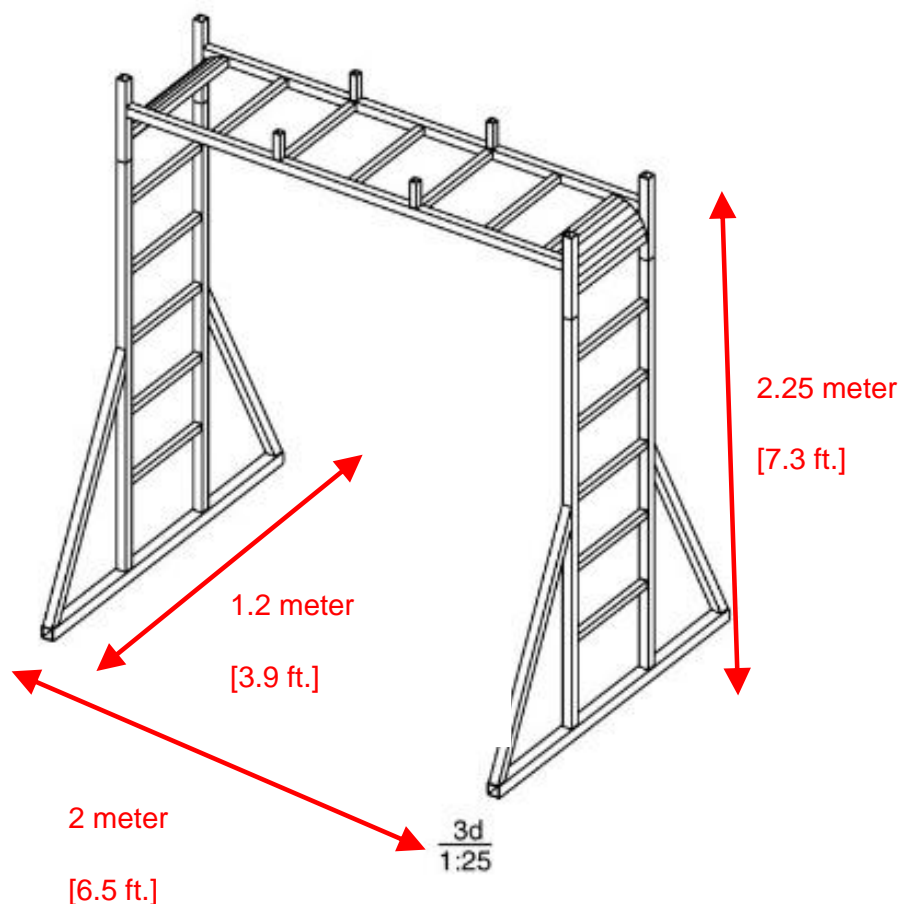
Weight capacity and design length can be adjusted on specific requests.



# CABLE SAFETY

## Cable Bridge

MODEL	CHARACTERISTICS
<b>Cable Bridge</b>	<ul style="list-style-type: none"> <li>• Tested method to suspend cables and wires</li> <li>• Provide a clean walkway or work location</li> <li>• Holds up to 500 kg cable weight – tested with 1.000 kg</li> <li>• Material: constructed with standard steel</li> <li>• Powder coated yellow, optional hot dip galvanized for use outside</li> <li>• Height 2.25 meter; 2 meter length; 1.20 meter width [7.3 x 6.5 x 3.9 ft]</li> <li>• Weight approximately 85 kg [190 lbs]</li> <li>• Transported on standard pallets [1.2 m x 0.8 m]</li> <li>• Custom sizes available on request</li> <li>• Production time approximately 6 weeks</li> </ul>



# OUR WORK AREA



CableSafe® / Westmark  
B.V Arnhemseweg 87  
3832 GK Leusden

