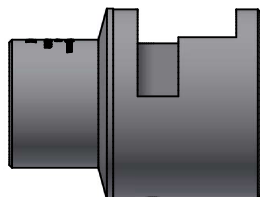
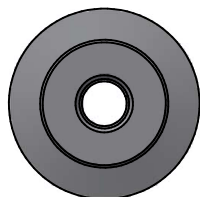
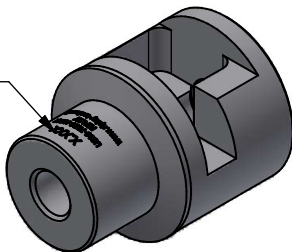
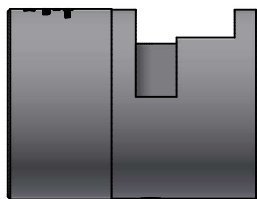
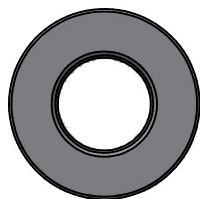
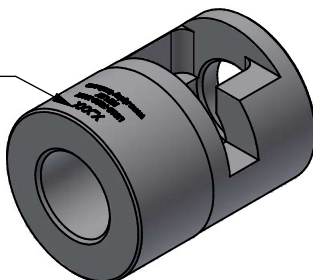


SEE NOTE 3

**STYLE A: 0.775" TO 1.500" BORE**

SEE NOTE 3

**STYLE B: 1.525" TO 2.500" BORE**

NOTES:

1. MATERIAL: BLACK DELRIN
2. BUSHING IS COMPATIBLE WITH US16-7010 (MAX) STRIPPING PLATFORM
3. BUSHING PART NUMBER: US16-7200-XXXX WHERE "-XXXX" IS THE BORE IN INCHES
4. BUSHING BORE IS SIZED BASED ON CABLE OD +0.035" TO +0.060"

EXAMPLE: PART NUMBER: **US16-7200-1100***BUSHING BORE: 1.100"**CABLE APPLICATION: 1.040" -1.065"*

THIS DOCUMENT CONTAINS INFORMATION THAT IS CONFIDENTIAL AND PROPRIETARY TO RIPLEY, A DIVISION OF CAPEWELL COMPONENTS COMPANY, LLC. THIS DOCUMENT IS FURNISHED ON THE UNDERSTANDING THAT THE DOCUMENT AND THE INFORMATION IT CONTAINS WILL NOT BE COPIED OR DISCLOSED TO OTHERS OR USED FOR ANY PURPOSE OTHER THAN CONDUCTING BUSINESS WITH RIPLEY, AND WILL BE RETURNED AND ALL FURTHER USE DISCONTINUED UPON REQUEST BY RIPLEY. COPYRIGHT CAPEWELL COMPONENTS COMPANY, LLC. YEAR OF COPYRIGHT IS FIRST YEAR INDICATED ON THIS DOCUMENT. ALL RIGHTS RESERVED.

UNLESS OTHERWISE SPECIFIED:
DECIMALS .XX +/- .01
.XXX +/- .005
.XXXX +/- .0002
FRACTIONS +/- 1/64
RADIUS & FILLETS .005-.020
ANGLES +/- 1°
DRILLED HOLES +.003/- .001
MACHINED SURFACES 63µIN
ID & OD RUNOUT .003
Z (FIM) CRITICAL <XXX>
DIMENSION NOTE, NUMBER <X>

DRAWN	migenesd	3/25/2024
CHECKED		
APPROVED	BB	3/25/2024

SIZE
A
SCALE
1 / 3

RIPLEY

TITLE

**THORNE &
DERRICK
INTERNATIONAL**

REFERENCE:	DWG NO
SUPERSEDES:	
SHEET 1 OF 1	

US16-7200-CIREV
0

0	4686	RELEASED FOR PRODUCTION	OM	4/10/2024
REV	ECN	DESCRIPTION	APP'D	DATE