



LINK BOX TECHNICAL DATA SHEET

Drw. No. **08.01.07**
Article No. **09707001/0**

Issued Date: 4.08.2021
Rev. Date: -
Rev. 00

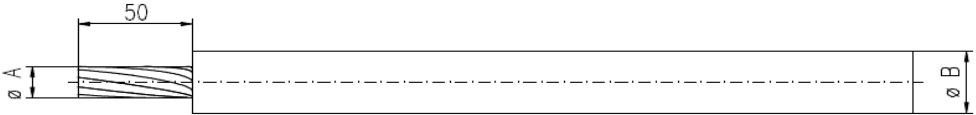
Type	LB. U . E . 6 . 1
- Description	Three Phase Earthing Link Box for Single Cable
- Designation	Underground
- Bonding	Earthing
- Sheath Voltage Limiter	N/A
- Phase No.	6
Earth	1
Drawing Number	08.01.07
- Article No	09707001/0
Electrical Characteristics	
- Rated Frequency	50/60 Hz
- SVL Type (*)	N/A
Protection Class	IP 68
Material	
- Enclosure	Stainless Steel AISI304 (AISI316 optional)
- Body Thickness (**)	2 mm
- Cover Thickness	3 mm
- Connection Links	10 µm Tinned Electrolytic Copper
- Connection Links Dimension	40x10 mm (400 mm ²)
- Gasket	Silicone
- Cable Glands	6x48 mm & 1x48
- Cable Glands Insulation	Silicone gasket & EPR tape & Mastic Tape & Heat Shrinkable Tube
- Insulation	Epoxy Support Insulator
- Conductor Fixing	Conductor Flexconn - 95-400 mm ²
- Painting Process	Electro Static Polyester Powder Paint
- Painting Code	RAL 7032
- Labeling Material	Stainless Steel
- Protection Cover	PET-G
AC Impulse Test	
- Phase-to-Phase	N/A kV
- Phase-to-Earth	40 kV
Voltage Withstand Test	
- AC	20 kV/1 min
- DC	25 kV/5 min
Short Circuit Test	
- Symmetrical	50 kA/1sec
Internal Power Arcing Test (Symmetrical)	40 kA/0.1 sec

* In case of mismatch in given values, technical drawing provided along with the Order Confirmation is valid. Ask for conformity if SVL is out of EMELEC's scope.

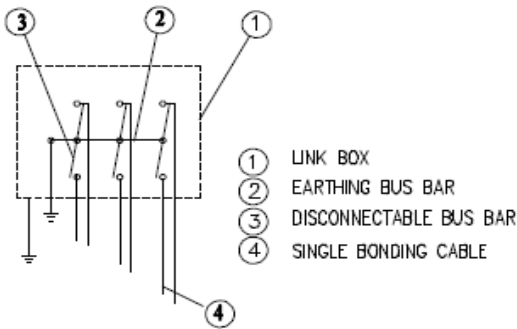
** Body Thickness might differ related to technical drawing revision. For exact value, refer to technical drawing provided along with the Order Confirmation

Bonding Cable

- Type										Single
Cross-Section (mm ²)	Gland Dia		A		B		C		D	
	Outer (mm)	Inner (mm)	min (mm)	max (mm)	min (mm)	max (mm)	min (mm)	max (mm)	min (mm)	max (mm)
95-400	48	44	12	24	17	40	N/A	N/A	N/A	N/A



Schematic Diagram



Enclosure Dimensions (*)

Width	690 mm
Length	670 mm
Height	389 mm
Weight	75 kg

Filling Compound (Optional)

Volume	N/A
--------	-----

* Scheme and dimensions are not to be mentioned as final drawing. For exact dimensions, refer to technical drawing provided along with the Order Confirmation
** Given are approximate values. Actual values might slightly differ.