



LINK BOX TECHNICAL DATA SHEET

Drw. No. **08.02.02**
Article No. **09802001/0**

Issued Date: 10.05.2019
Rev. Date: 12.08.2021
Rev. 01

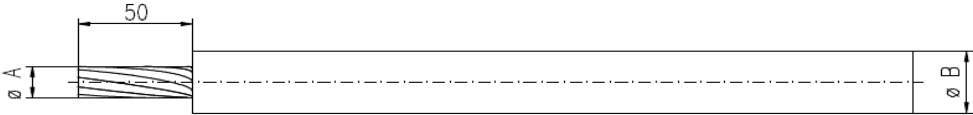
Type	LB. U . E .3SA . 3 . 1	
- Description	Earthing Link Box with SVL for Single Cable	
- Designation	Underground	
- Bonding	Earthing	
- Sheath Voltage Limiter	qty	3
- Phase No.		3
Earth		1
Drawing Number	08.02.02	
- Article No	09802001/0	
Electrical Characteristics		
- Rated Frequency	50/60	Hz
- SVL Type (*)	Up to 18 kV / Optional	
Protection Class		
	IP	68
Material		
- Enclosure	Stainless Steel AISI304 (AISI316 optional)	
- Body Thickness (**)	2 mm	
- Cover Thickness	3 mm	
- Connection Links	10 µm Tinned Electrolytic Copper	
- Connection Links Dimension	40x10 mm (400 mm2)	
- Gasket	Silicone	
- Cable Glands	4x48 mm	
- Cable Glands Insulation	Silicone gasket & EPR tape & Mastic Tape & Heat Shirinkable Tube	
- Insulation	Epoxy Support Insulator	
- Conductor Fixing	Conductor Flexconn - 95-400 mm2	
- Painting Process	Electro Static Polyester Powder Paint	
- Painting Code	RAL 7032	
- Labeling Material	Stainless Steel	
- Protection Cover	PET-G	
AC Impulse Test		
- Phase-to-Phase	75	kV
- Phase-to-Earth	40	kV
Voltage Withstand Test		
- AC	20	kV/1 min
- DC	25	kV/5 min
Short Circuit Test		
- Symmetrical	50	kA/1sec
Internal Power Arcing Test (Symmetrical)		
	40	kA/0.1 sec

* In case of mismatch in given values, technical drawing provided along with the Order Confirmation is valid. Ask for conformity if SVL is out of EMELEC's scope.

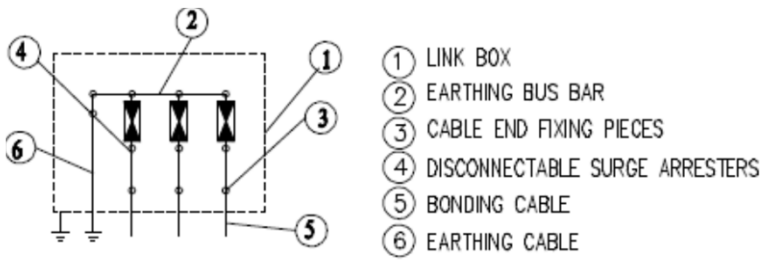
** Body Thickness might differ related to technical drawing revision. For exact value, refer to technical drawing provided along with the Order Confirmation

Bonding Cable

- Type										Single
Cross-Section (mm ²)	Gland Dia		A		B		C		D	
	Outer (mm)	Inner (mm)	min (mm)	max (mm)	min (mm)	max (mm)	min (mm)	max (mm)	min (mm)	max (mm)
95-400	48	44	12	24	17	40	N/A	N/A	N/A	N/A



Schematic Diagram



Enclosure Dimensions (*)

Width	690 mm
Length	670 mm
Height	389 mm
Weight	62 kg

Filling Compound (Optional)

Volume	N/A
--------	-----

* Scheme and dimensions are not to be mentioned as final drawing. For exact dimensions, refer to technical drawing provided along with the Order Confirmation
** Given are approximate values. Actual values might slightly differ.