



LINK BOX TECHNICAL DATA SHEET

Drw. No. 08.06.02
Article No. 010202001/0

Issued Date: 4.08.2021
Rev. Date: -
Rev. 00

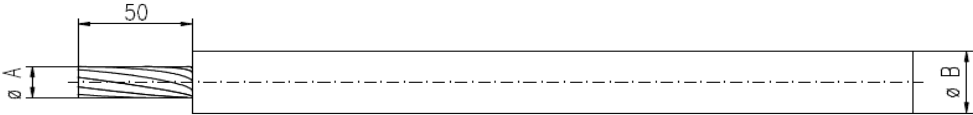
Type	LB. U . SB .6SA . 6 . 1		
- Description	Both Ends Single Point Bonding Link Box for Single Cable		
- Designation	Underground		
- Bonding	Single Point		
- Sheath Voltage Limiter	qty	6	
- Phase No.	6		
Earth	1		
Drawing Number	08.06.02		
- Article No	010202001/0		
Electrical Characteristics			
- Rated Frequency	50/60	Hz	
- SVL Type (*)	Up to 18 kV / Optional		
Protection Class			
			IP 68
Material			
- Enclosure	Stainless Steel AISI304 (AISI316 optional)		
- Body Thickness (**)	2 mm		
- Cover Thickness	3 mm		
- Connection Links	10 µm Tinned Electrolytic Copper		
- Connection Links Dimension	40x10 mm (400 mm2)		
- Gasket	Silicone		
- Cable Glands	6x48 mm & 1x48		
- Cable Glands Insulation	Silicone gasket & EPR tape & Mastic Tape & Heat Shirinkable Tube		
- Insulation	Epoxy Support Insulator		
- Conductor Fixing	Conductor Flexconn - 95-400 mm2		
- Painting Process	Electro Static Polyester Powder Paint		
- Painting Code	RAL 7032		
- Labeling Material	Stainless Steel		
- Protection Cover	PET-G		
AC Impulse Test			
- Phase-to-Phase	75	kV	
- Phase-to-Earth	40	kV	
Voltage Withstand Test			
- AC	20	kV/1 min	
- DC	25	kV/5 min	
Short Circuit Test			
- Symmetrical	N/A		
Internal Power Arcing Test (Symmetrical)			
	40	kA/0.1 sec	

* In case of mismatch in given values, technical drawing provided along with the Order Confirmation is valid. Ask for conformity if SVL is out of EMELEC's scope.

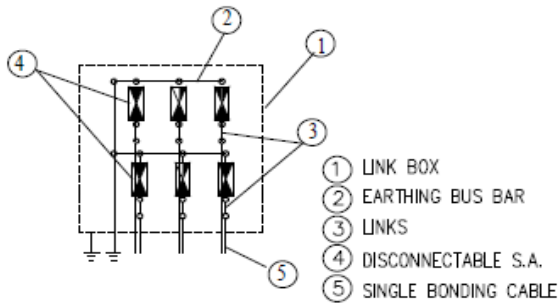
** Body Thickness might differ related to technical drawing revision. For exact value, refer to technical drawing provided along with the Order Confirmation

Bonding Cable

- Type										Single
Cross-Section (mm ²)	Gland Dia		A		B		C		D	
	Outer (mm)	Inner (mm)	min (mm)	max (mm)	min (mm)	max (mm)	min (mm)	max (mm)	min (mm)	max (mm)
95-400	48	44	12	24	17	40	N/A	N/A	N/A	N/A



Schematic Diagram



Enclosure Dimensions (*)

Width	690 mm
Length	670 mm
Height	389 mm
Weight	80 kg

Filling Compound (Optional)

Volume	N/A
--------	-----

* Scheme and dimensions are not to be mentioned as final drawing. For exact dimensions, refer to technical drawing provided along with the Order Confirmation
** Given are approximate values. Actual values might slightly differ.