



## LINK BOX TECHNICAL DATA SHEET

Drw. No. **13.01.03**  
Article No. **15703001/0**

Issued Date: 12.08.2021  
Rev. Date: -  
Rev. 00

Type	LB. U . SB .6SA . 3 . 1		
- Description	Three Phase Both Ends S.Point Bonding Link Box for Coaxial Cable		
- Designation	Underground		
- Bonding	Single Point		
- Sheath Voltage Limiter	qty	6	
- Phase No.	3		
Earth	1		
Drawing Number	13.01.03		
- Article No	15703001/0		
Electrical Characteristics			
- Rated Frequency	50/60	Hz	
- SVL Type (*)	Up to 10 kV / Optional		
Protection Class			
	IP	68	
Material			
- Enclosure	Stainless Steel AISI304 (AISI316 optional)		
- Body Thickness (**)	3 mm		
- Cover Thickness	3 mm		
- Connection Links	10 µm Tinned Electrolytic Copper		
- Connection Links Dimension	50x10 mm (500 mm2)		
- Gasket	Silicone		
- Cable Glands	3x89 mm & 1x48 mm		
- Cable Glands Insulation	Silicone gasket & EPR tape & Mastic Tape & Heat Shirinkable Tube		
- Insulation	Epoxy Support Insulator		
- Conductor Fixing	Coaxial Flexconn - 400-500 mm2		
- Painting Process	Electro Static Polyester Powder Paint		
- Painting Code	RAL 7032		
- Labeling Material	Stainless Steel		
- Protection Cover	PET-G		
AC Impulse Test			
- Phase-to-Phase	75	kV	
- Phase-to-Earth	40	kV	
Voltage Withstand Test			
- AC	20	kV/1 min	
- DC	25	kV/5 min	
Short Circuit Test			
- Symmetrical	N/A		
Internal Power Arcing Test (Symmetrical)			
	40	kA/0.1 sec	

\* In case of mismatch in given values, technical drawing provided along with the Order Confirmation is valid. Ask for conformity if SVL is out of EMELEC's scope.

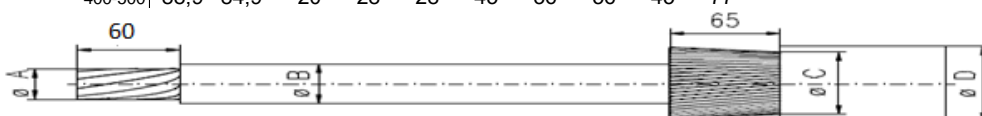
\*\* Body Thickness might differ related to technical drawing revision. For exact value, refer to technical drawing provided along with the Order Confirmation



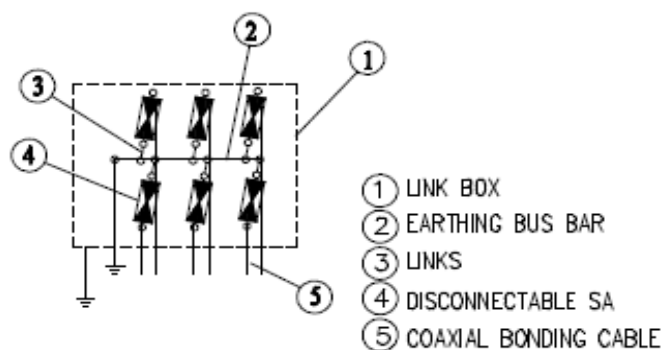
## LINK BOX TECHNICAL DATA SHEET

### Bonding Cable

- Type	Coaxial									
	Gland Dia		A		B		C		D	
Cross-Section (mm <sup>2</sup> )	Outer (mm)	Inner (mm)	min (mm)	max (mm)	min (mm)	max (mm)	min (mm)	max (mm)	min (mm)	max (mm)
400-500	88,9	84,9	20	28	28	45	36	56	45	77



### Schematic Diagram



### Enclosure Dimensions (\*)

Width	690 mm
Length	670 mm
Height	354 mm
Weight	92 kg

### Filling Compound (Optional)

Volume	62 lt (**)
--------	------------

\* Scheme and dimensions are not to be mentioned as final drawing. For exact dimensions, refer to technical drawing provided along with the Order Confirmation

\*\* Given are approximate values. Actual values might slightly differ.