



LINK BOX TECHNICAL DATA SHEET

Drw. No. **18.09.11**
Article No. **22511001/0**

Issued Date: 12.10.2021
Rev. Date: -
Rev. 00

| Type | LB. U . E . 3 . 1 | |
|--|---|----------|
| - Description | Direct Earthing Link Box with Transparent Window for Single Cable | |
| - Designation | Underground | |
| - Bonding | Earthing | |
| - Sheath Voltage Limiter | N/A | |
| - Phase No. | 3 | |
| Earth | 1 | |
| Drawing Number | 18.09.11 | |
| - Article No | 22511001/0 | |
| Electrical Characteristics | | |
| - Rated Frequency | 50/60 | Hz |
| - SVL Type (*) | N/A | |
| Protection Class | | |
| | IP | 68 |
| Material | | |
| - Enclosure | Stainless Steel AISI304 (AISI316 optional) | |
| - Body Thickness (**) | 2 mm | |
| - Cover Thickness | 3 mm | |
| - Connection Links | 10 µm Tinned Electrolytic Copper | |
| - Connection Links Dimension | 40x10 mm (400 mm2) | |
| - Gasket | Silicone | |
| - Cable Glands | 4x48 mm | |
| - Cable Glands Insulation | Silicone gasket & EPR tape & Mastic Tape & Heat Shirinkable Tube | |
| - Insulation | Epoxy Support Insulator | |
| - Conductor Fixing | Conductor Flexconn - 95-400 mm2 | |
| - Painting Process | Electro Static Polyester Powder Paint | |
| - Painting Code | RAL 7032 | |
| - Labeling Material | Stainless Steel | |
| - Protection Cover | PET-G | |
| AC Impulse Test | | |
| - Phase-to-Phase | N/A | kV |
| - Phase-to-Earth | 40 | kV |
| Voltage Withstand Test | | |
| - AC | 20 | kV/1 min |
| - DC | 25 | kV/5 min |
| Short Circuit Test | | |
| - Symmetrical | 50 | kA/1sec |
| Internal Power Arcing Test (Symmetrical) | | |
| | N/A | |

* In case of mismatch in given values, technical drawing provided along with the Order Confirmation is valid. Ask for conformity if SVL is out of EMELEC's scope.

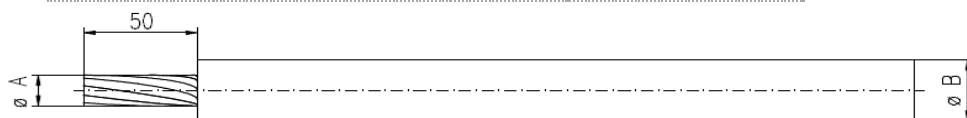
** Body Thickness might differ related to technical drawing revision. For exact value, refer to technical drawing provided along with the Order Confirmation



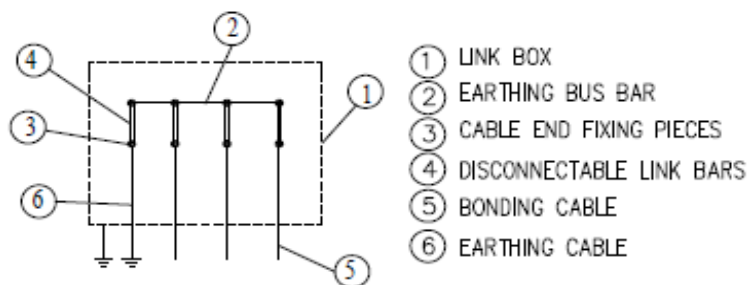
LINK BOX TECHNICAL DATA SHEET

Bonding Cable

| | | | | | | | | | | |
|----------------------------------|------------|------------|----------|----------|----------|----------|----------|----------|----------|----------|
| - Type | Single | | | | | | | | | |
| | Gland Dia | | A | | B | | C | | D | |
| Cross-Section (mm ²) | Outer (mm) | Inner (mm) | min (mm) | max (mm) | min (mm) | max (mm) | min (mm) | max (mm) | min (mm) | max (mm) |
| 95-400 | 48 | 44 | 12 | 24 | 17 | 40 | N/A | N/A | N/A | N/A |



Schematic Diagram



Enclosure Dimensions (*)

| | |
|--------|--------|
| Width | 690 mm |
| Length | 670 mm |
| Height | 334 mm |
| Weight | 70 kg |

Filling Compound (Optional)

| | |
|--------|------------|
| Volume | 55 lt (**) |
|--------|------------|

* Scheme and dimensions are not to be mentioned as final drawing. For exact dimensions, refer to technical drawing provided along with the Order Confirmation

** Given are approximate values. Actual values might slightly differ.