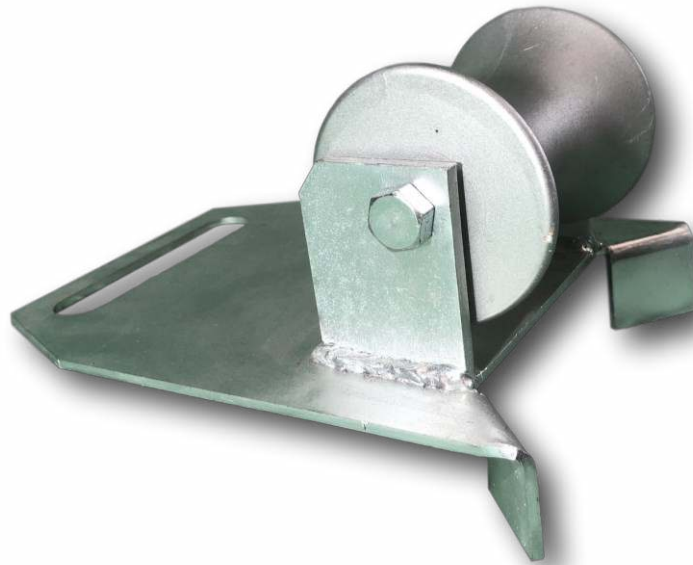


MR2 Edge/Corner Mount Manhole Lead In Roller



The MR2 manhole cable roller leads the cable from the drum into the jointbox/manhole or the winch bond out of the manhole. The roller has 2 angled hooks for location on the manhole edge or on a 90 degree corner

- Heavy steel section construction
- 90mm diameter aluminium roller*
- Oil impregnated maintenance free bushes fitted
- Zinc plated finish
- Size: 27cm long x 19cm wide
- Weight: 3Kg

* The aluminium roller can be substituted with a solid steel roller (MR2S) when using wire winch bond thus preventing damage