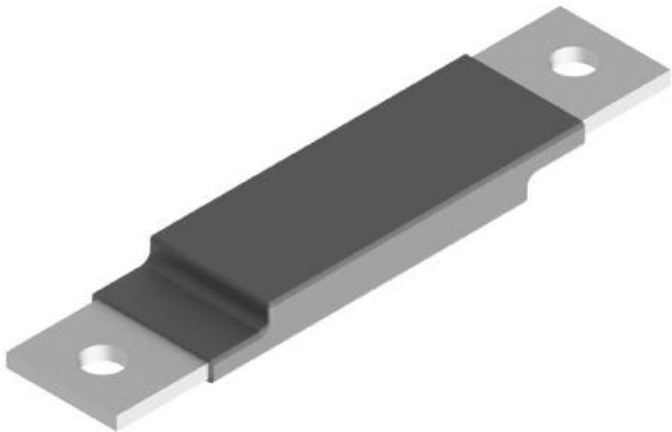


# SVL0.12

## 120V U<sub>r</sub> Sheath Voltage Limiter



120V rated sheath voltage limiter for connecting across insulating gaps that cannot be directly bonded. Coated with adhesive lined heat-shrink tubing to achieve an IP68 protection rating, combined with tinned copper mounting and 316 (A4) stainless steel fixings, suitable for use in harsh environments. This device is supplied as the Sheath Voltage Limiter (SVL0.12) and standard fixing kit (425-1-0062), with different SVL voltage ratings and fixing kits available on request.



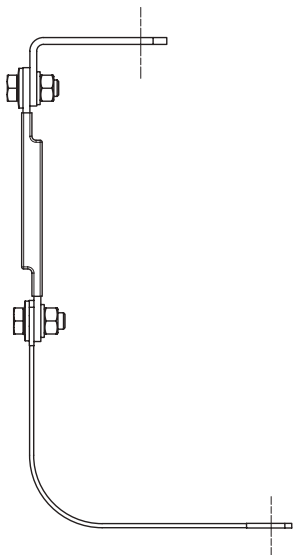
Arrester Characteristics		
Rated voltage	U <sub>r</sub>	120V
Maximum continuous operating voltage, a.c.	U <sub>c</sub>	75V
Maximum continuous operating voltage, d.c.	U <sub>c</sub>	100V
Reference voltage, 1mA d.c.		108V to 132V
Energy, 1ms square wave		>340J

425-1-0062 Fixing kit contents	
Description	Quantity
Socket cap screw, A4/70, DIN 912 - M12 x 40	1
Hex bolt, A4/70, DIN 933 - M12 x 30	2
Hex Nut, A4/70, DIN 934 - M12	3
Form A washer, A4, DIN 125 - M12	3
Conical washer, A4, DIN 6796 - M12	3
Copper braid, Tin plated, 70mm <sup>2</sup> , M12 x 300 centres	1
HDHC Copper bracket, Tin plated	1

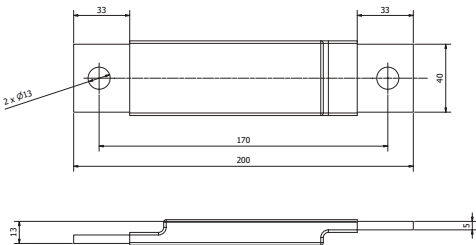
Physical/Environmental Characteristics		
Operating temperature		-40 to +70°C
Operating humidity		5 to 95%
Ingress Protection	IP	68
Fixing hole size		M12

Part codes		
SVL		SVL0.12
Fixing kit		425-1-0062

### Typical Arrangement



### Dimensions (mm)



### Internal Configuration

