

# US01 Series

## Adjustable Cable Stripper

The industry's most versatile, reliable, and accurate adjustable tool designed specifically for mid-span and end stripping on primary and secondary utility cables.



This US01 Series Adjustable Cable Stripper is designed for precise mid-span and end stripping, accommodating cable diameters ranging from 0.5" to 2.5".

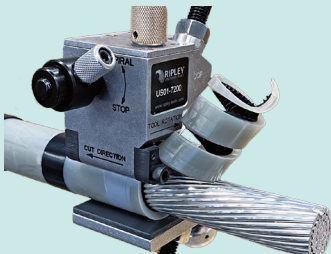



Built for both durability and efficiency, the US01 effortlessly handles insulation removal, including XLPE, PE, and EPR, on cables rated between 600V and 35kV, making it an essential tool for any cable jointer.

Its standout features—such as a unique clamping design, adjustable blade depth, removable handle, field-replaceable blade, and selector switch, prioritize safety and ease of operation, transforming the insulation removal process in the field.

### Features

- Adjustable from 0.5" to 2.5" cable diameter, the US01 handles a wide range of insulation removal tasks on cables rated from 600V to 35kV
- Heavy duty tool designed for easy jacket & XLPE, PE and EPR insulation removal
- Removable handles allow stripping in locations where space is limited
- Easy-to-change universal single blade with a convenient spare blade integrated into the tool
- User-friendly selector switch to quickly move between ring and spiral cut settings

Part #	Model	Item Type	Handles
US01-7200	US01 Standard	Tool w/ Handles	1 Rotating Handle & 1 Ball Handle
US01-7205	US01 w/ Stop Bar	Tool w/ Handles	1 Rotating Handle & 1 Ball Handle
US01-7504	Blade Depth Gauge Kit	Accessories	N/A
US01-7510	Stop Bar Kit	Accessories	N/A

Adjustable Design	Selector Switch	Removable Handles	Blade Depth
 <p>Accommodates various cable diameters from 0.5" to 2.5"</p>	 <p>Quickly switch between ring and spiral cut settings</p>	 <p>Removable handles simplify cable stripping in tight spaces</p>	 <p>Adjustable blade depth for tailored insulation removal</p>

# Make Cable Preparation Easier

With Additional Ripley® Products



## US16 MAX

### Drill-Operated Jacket Removal

- Designed to remove outer jackets on medium voltage power cables up to 2.625" (66.675mm) OD
- Unlimited strip lengths on #2 AWG 15kv 175 mil jackets through 1000 MCM AWG 35kv 420 mil jackets

PART #	DETAIL
US16-7010	Tool
US16-7200-XXXX	Bushings - Contact Ripley for best fit

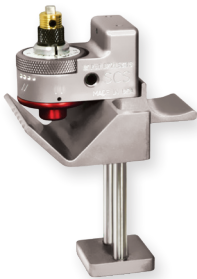


## MV Underground Kit

### Complete Adjustable Tool Set

- The best of Ripley's adjustable tools for 15-35 kV cable prep
- Includes US15, SCS, US01, US10, plus folding rule, jacket lift tool, and pliers
- Some customization available, refer to table for accessory swaps

PART #	KIT DETAIL
UA01-7066	Includes Kevlar shears for detail cuts
UA01-7069	Includes cutting pliers for higher leverage cutting



## SCS

### Semi-Con Scoring Tool

- Provides accurate semi-con scoring; capable of longitudinal & spiral cuts
- Precise & easily adjustable blade depths from 0" to 0.16" (0 to 4 mm) in increments of 0.002" (0.05 mm)

MODEL	PART #	SCALE	CABLE SIZE Ø
SCS	43630	Customary	0.31" to 1.77"
SCS	43625	Metric	8 to 45 mm



## UA04-7000

### 7" Serrated Flat Nose Pliers

- Comfortable, ergonomic & slip-free dual-compound thermoplastic grips
- Drop-forged, hardened & tempered steel alloy for strength & longevity

MODEL	PART #	TYPE	LENGTH
UA04-7000	UA04-7000	Flat Nose	7" (177.8 mm)



## QC-2

### Quick Cable Clamp

- Easy-to-use, heavy duty aluminum clamp quickly attaches to stop jacket stripping operations
- Convenient ratchet allows for relocation of handle position

MODEL	PART #	CABLE SIZE Ø
QC-2	43970	0.5" to 2.5" 12.7 to 63.5 mm



## US10 Series

### 15-35kV URD Chamfering Tool

- Size adjustment clamping system quickly & easily adjusts, then locks onto the insulation
- Chamfers 15 to 35 kV cable to 30° bevel, 0.15" (3.91 mm) in length

MODEL	PART #	CABLE SIZE Ø
US10	US10-7000	0.55" to 2.36" 14 to 60 mm

For more information or to locate your nearest authorized Ripley® distributor, visit [www.ripley-tools.com](http://www.ripley-tools.com) or call 1 (800) 528-8665 to speak with a customer service representative.