



Toe Board

Data Sheet v1.1

Dropped Objects Prevention Toe Board

FEATURES

- Neatly enclose field cut penetrations
- Great for rework
- Eliminates the need to weld banding or split oversize pipe
- Faster on fiberglass grating
- Uniform, finished appearance

INSTALLATION

- No hot work permit required
- No scaffolding required
- Installs from the top-side of grating
- Sandwich grating between hardware and T5
- Easy to install
- Just as fast and easy to remove

WIDESPREAD SUCCESS

- Proven design has been successfully used for over 20 years
- Specified by many multi-national industrial companies
- Recommended & used by many engineering & construction firms

MATERIAL & WEATHERABILITY

- Excellent outdoor weatherability
- In sunlight, material will surface discolor but not degrade
- No loss of tensile strength after 9 months in Arizona and Florida UV-exposure tests

BENEFITS

- Safe & effective
- Maintenance free
- Long service life
- Proven design
- Provides the protection you want
- Economical

CONSTRUCTION

- All molded parts are made from a strong, rigid, UV-resistant polyurethane
- Non-corrosive
- Molded parts colored throughout with safety yellow
- Supplied with galvanized hardware J-Bolt (T5-J)

Installation



Layout the T5 pieces around the pipe penetration, and insert the 3/8" x 3 1/2" long bolts through the connecting holes. Thread them, but do not tighten.



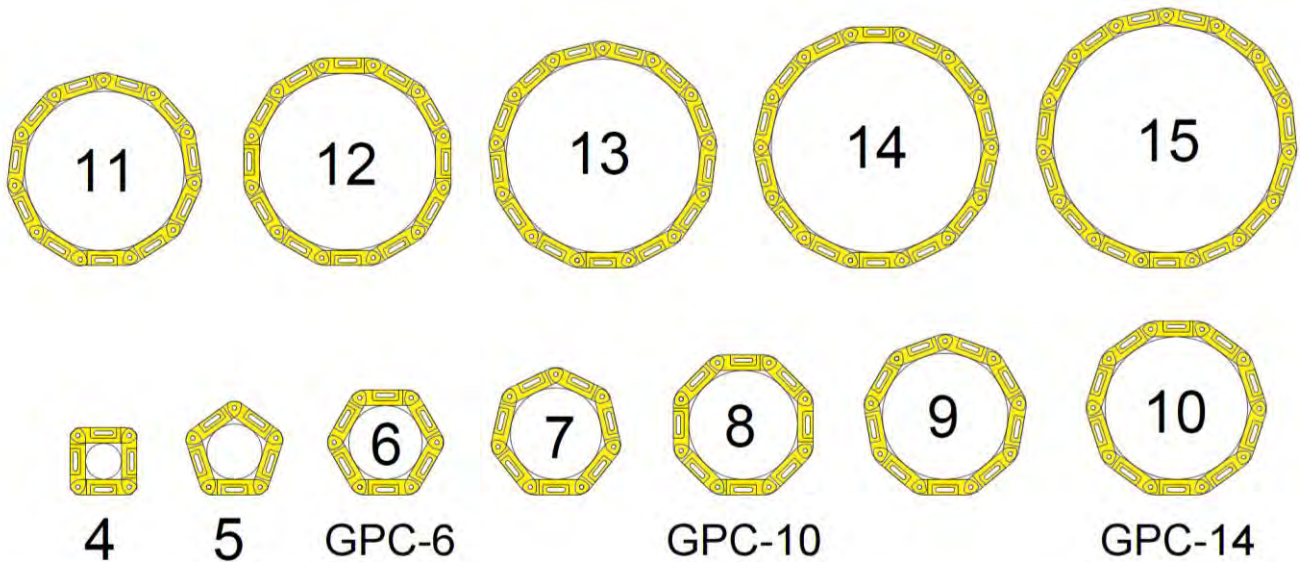
Drop J-bolts in the slots located on the bottom of each T5 piece. Catch one of the grating bars with the J-bolt and tighten. Do this for all T5 pieces.



Once all the J-bolts are securely fastened, tighten each of the 3/8" x 3 1/2" bolts in the connecting holes.

Dropped Objects Prevention Toe Board

One Link (T5) To Encircle All Pipe Sizes



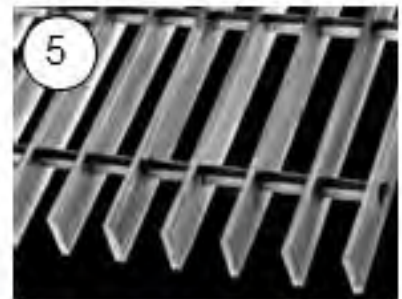
Used on most types of grating



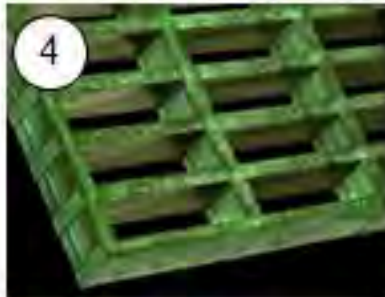
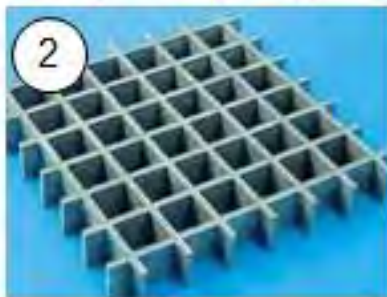
Square Opening



Rectangular Opening



Rectangular Opening



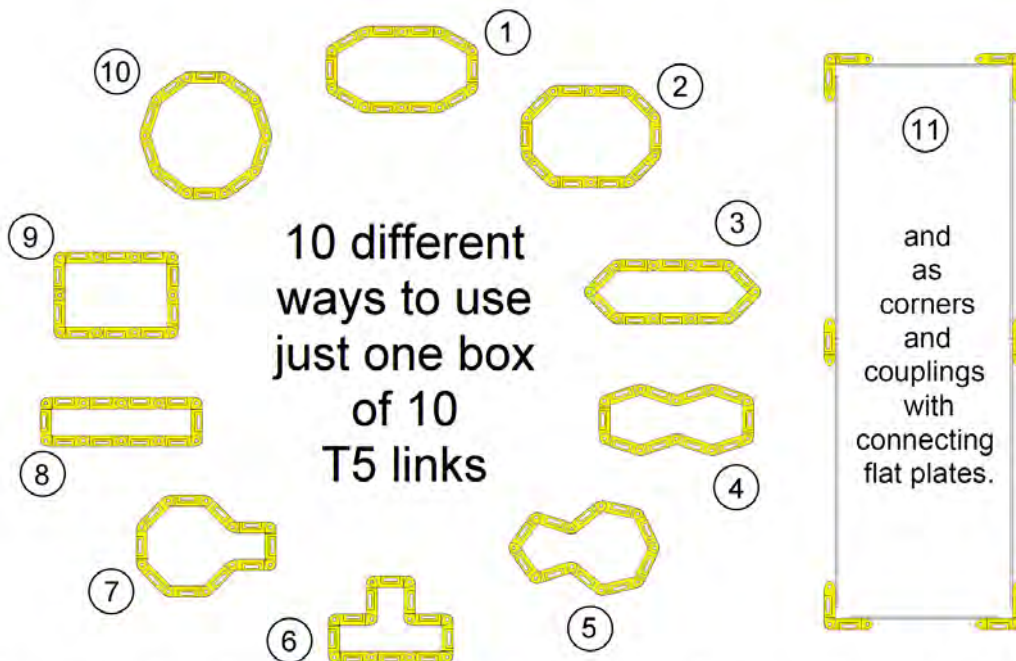
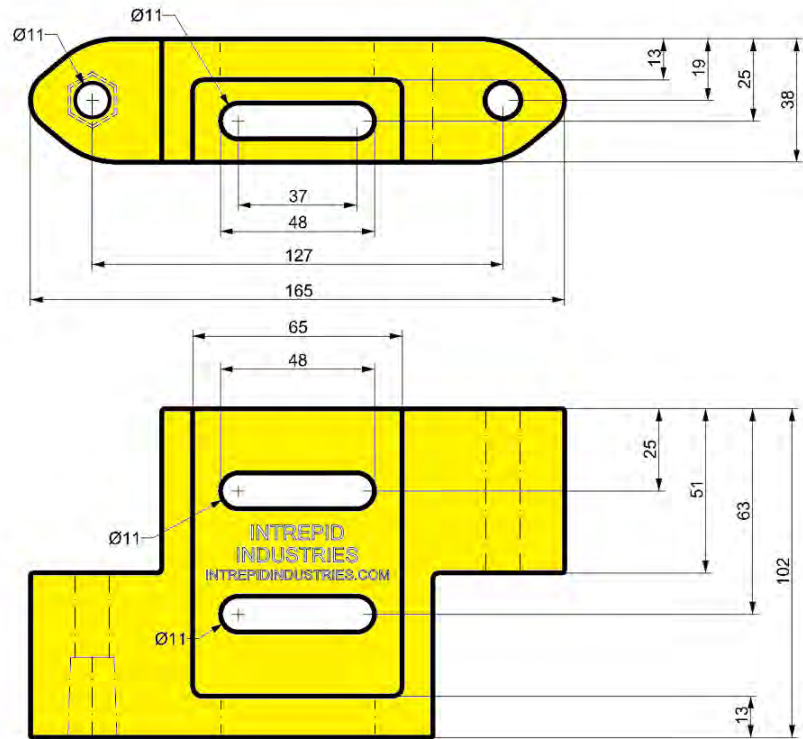
Dropped Objects Prevention Toe Board

Dimensions and layouts

Number of T5	Max. Inside Circle [mm]
4	90
5	135
6	180
7	220
8	265
9	310
10	350
11	395
12	425
13	475
14	520
15	560

To Calculate T5 Links Needed For Larger Circular Enclosures

Round Up
The Result Of

$$\frac{3.14 \times (\text{Diam.} + 40)}{127}$$


Just think what you can do with a larger box of 40 !

OUR WORK AREA



Subsidiary
Draper, Utah, USA
Westmark LLC

Main office / HQ
Leusden, The Netherlands
Westmark B.V.

